

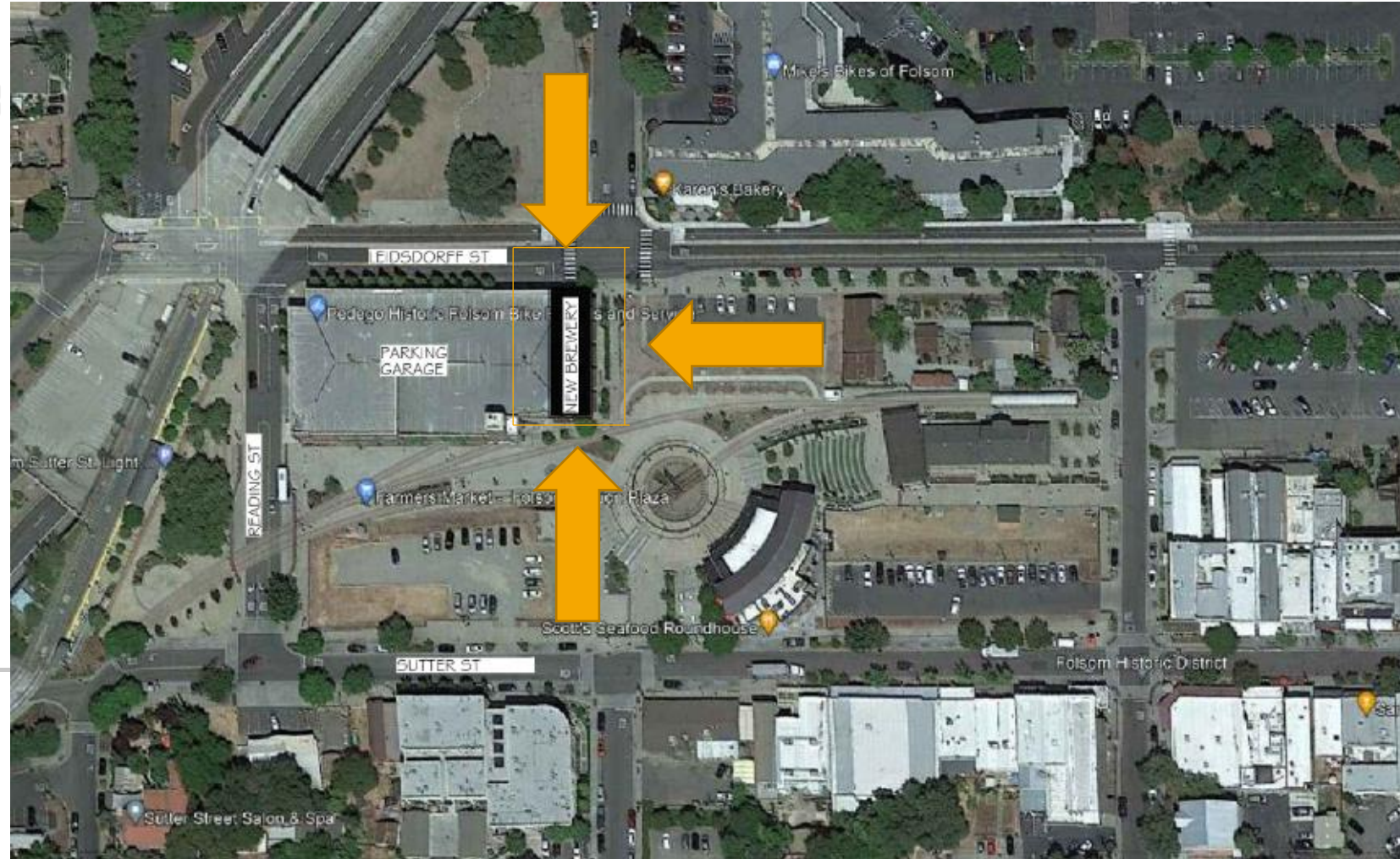
**905 Leidesdorff  
St Ste. 100**

# **Signage Plan Proposal**



**905 Leidesdorff  
St Ste. 100**

**Location for  
Signage**





# Proposed Signage- *EAST* *Side of the* *Building*

New backlit signage with  
metal letters  
1.5ft X 6ft = 9 SF

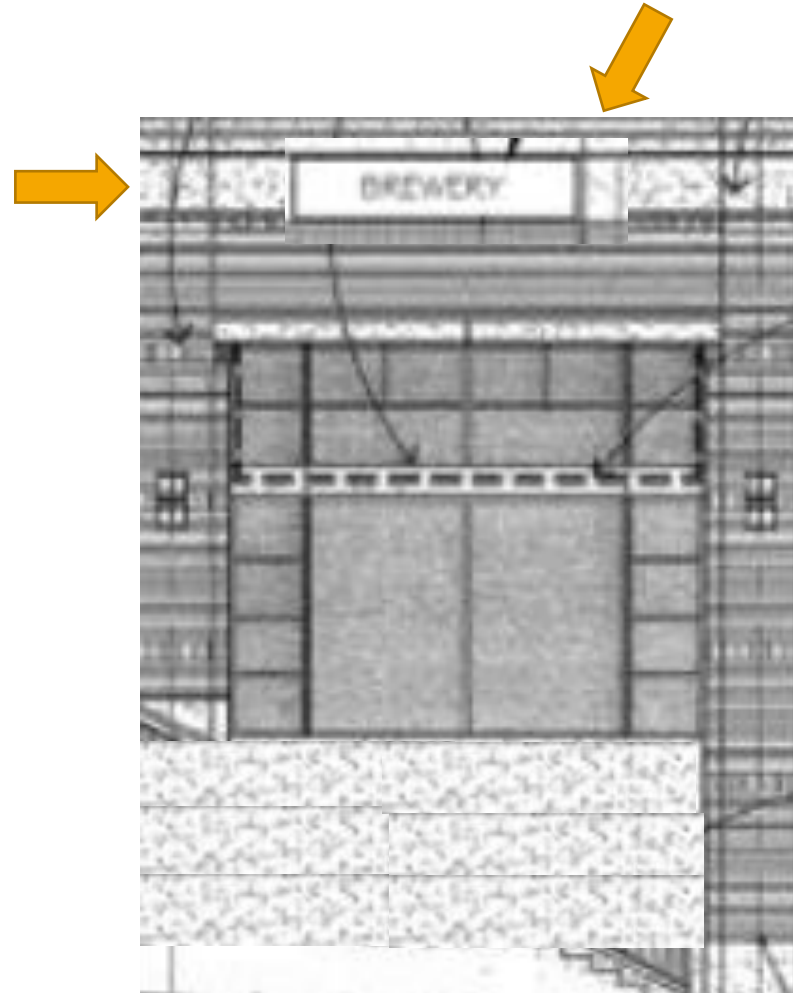


**905 Leidesdorff  
St Ste. 100**

**Proposed  
Signage- *WEST*  
Side of the  
Building**

**“BREWERY”**

New backlit signage with  
metal letters  
1.5ft X 6ft = 9 SF

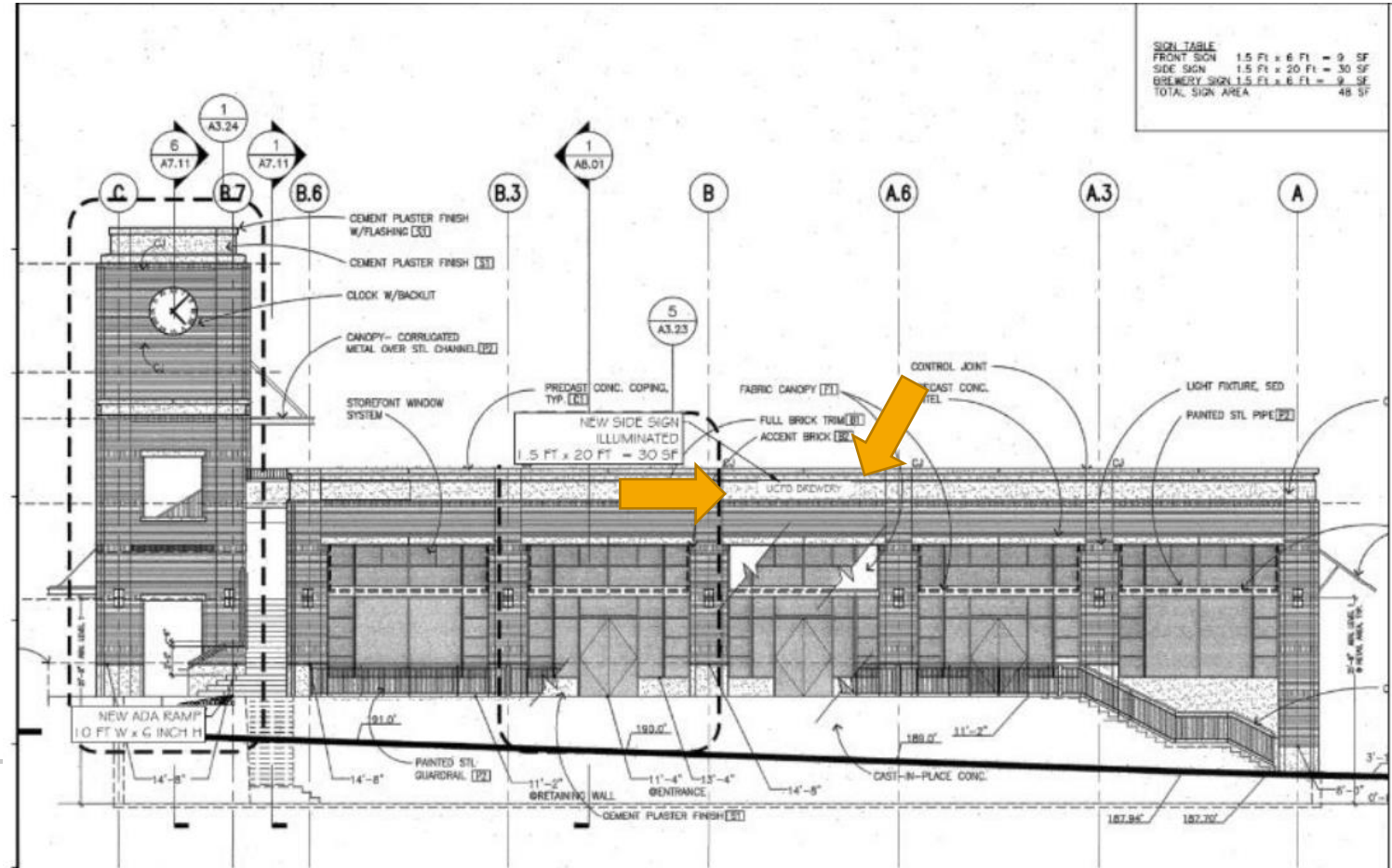


# 905 Leidesdorff St Ste. 100

## Proposed Signage- *NORTH Side of the Building*

“UCFB BREWERY”

New backlit signage with  
metal letters  
1.5ft X 20ft = 30 SF





# Proposed EAST Facing Signage- *LED Backlit* *Example*

**TYPE:** Stud mounted individual metal letters

**ILLUMINATION:** LED Backlit (3000k or less)

**TOTAL SQUARE FOOTAGE:** 1.5ft X 6ft = 9 Square Feet



In accordance with the Historic District sign ordinance, Uncle Charlie's Firehouse & Brew would like to emulate signage similar in the existing area. "The Roundhouse" with backlit 3000k or less wattage and "Old Standard" style font would be most similar.



# Proposed WEST Facing Signage- LED Backlit Example

BREWERY

**TYPE:** Stud mounted individual metal letters

**ILLUMINATION:** LED Backlit (3000k or less)

**TOTAL SQUARE FOOTAGE:** 1.5ft X 6ft = 9 Square Feet



In accordance with the Historic District sign ordinance, Uncle Charlie's Firehouse & Brew would like to emulate signage similar in the existing area. "The Roundhouse" with backlit 3000k or less wattage and "Old Standard" style font would be most similar.





# Proposed NORTH Facing Signage- *LED Backlit* *Example*

**TYPE:** Stud mounted individual metal letters

**ILLUMINATION:** LED Backlit (3000k or less)

**TOTAL SQUARE FOOTAGE:** 1.5t X 20ft = 30 Square Feet



In accordance with the Historic District sign ordinance, Uncle Charlie's Firehouse & Brew would like to emulate signage similar in the existing area. "The Roundhouse" with backlit 3000k or less wattage and "Old Standard" style font would be most similar.







# Total Proposed Signage

**LOCATION #1 and #2:** East and West sides of the building facing Sutter Street and Leidesdorff respectively, will feature metal letters on white stucco above brick and below roofline

**TYPE:** Stud mounted individual metal letters

**ILLUMINATION:** LED Backlit (3000k or less)

**MATERIAL:** Powder coated, Painted or anodized metal

**COLOR:** Black or Graphite metal

**LETTER HEIGHT:** 1.5 foot

**SIGNAGE LENGTH:** 6 feet

**TOTAL SQUARE FOOTAGE:** 1.5ft X 6ft = 9 Square Feet

**LOCATION:** North side of the building facing Sutter Street on white stucco above brick and below roofline

**TYPE:** Stud mounted individual metal letters

**ILLUMINATION:** LED Backlit (3000k or less)

**MATERIAL:** Powder coated, Painted or anodized metal

**COLOR:** Black or Graphite metal

**LETTER HEIGHT:** 1.5 foot approx

**SIGNAGE LENGTH:** 20 feet

**TOTAL SQUARE FOOTAGE:** 1.5ft X 20ft = 30 Square Feet

**TOTAL SQUARE FOOTAGE FOR THREE SIDES OF THE BUILDING: 48 Square Feet**