

File Name: S:\common\Projects\361-City of Folsom\006-Ashland II Project\04-Design\Drawings\03-Civil\361-006-C206 to C210 Pipeline.dwg
Plotted By: ANTHONY PEREZ
Plot Date: 6/18/2021 9:41 AM

A B C D E F G H

MATCH LINE G - SEE C205

6

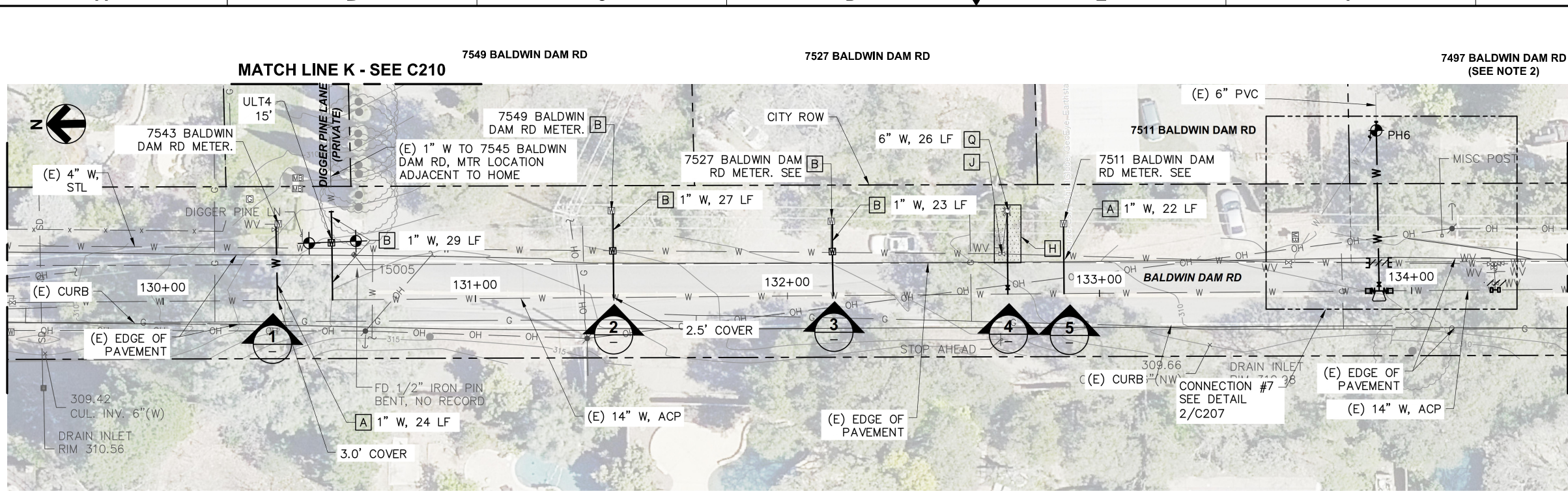
5

4

3

2

1



PLAN VIEW
SCALE: 1"=20'-0"

NOTES

1. POTHOLE TO VERIFY LOCATION, SIZE AND MATERIAL OF EXISTING WATER MAIN PRIOR TO ORDERING PIPING AND CONNECTION FITTINGS.
2. WATER SERVICE LATERAL IMPROVEMENTS NOT REQ'D FOR THIS ADDRESS.
3. FOR WORK WITHIN THE ROADWAY BACKFILL AND RESTORE ASPHALT ROAD SECTION USING T-CUT AND GRIND ON ALL SIDES OF THE EXCAVATION PER DET D/253.
4. FOR WORK OUTSIDE OF THE ROADWAY BACKFILL PER DET A/C253 AND RESTORE ALL EXISTING SURFACE CONDITIONS AS SHOWN IN PHOTO REFERENCE, SPECIFICATIONS AND SIGNED RIGHT OF ENTRY AGREEMENTS.
5. SEE SEQUENCE OF OPERATION NOTES ON DWG G005 FOR OPERATION DURING THE DECOMMISSIONING PROCESS. CONTRACTOR TO NOTE THAT EXISTING MAIN MUST REMAIN IN SERVICE DURING THIS TIME AND THAT DECOMMISSIONING OF EXISTING MAIN CANNOT COMMENCE WITHOUT WRITTEN CITY APPROVAL.
6. REMOVE (E) WATER MAIN AS REQ'D TO INSTALL NEW MAIN TIE-INS.

CONSTRUCTION NOTES

- [A] CONSTRUCT NEW WATER SERVICE LATERAL AND CONNECT TO EXISTING EXISTING WATER SERVICE AT UPSTREAM END OF EXISTING METER PER DET C/C250. ALL ASSOCIATED METER APPURTENANCES UPSTREAM OF METER SHALL BE REPLACED.
- [B] CONSTRUCT NEW WATER SERVICE LATERAL WITH NEW METER BOX PER DET A/C250. REMOVE EXISTING METER BOX, METER, ANGLE METER STOP AND ALL OTHER ASSOCIATED METER APPURTENANCES AND CONNECT TO EXISTING WATER SERVICE PIPING.
- [H] ALL EXCAVATION WORK IDENTIFIED WITHIN THE SHADED AREA, WHETHER INSIDE OR OUTSIDE OF THE CRITICAL ROOT ZONE, MUST BE ACCOMPLISHED BY USE OF HAND DIGGING TO PRESERVE AND PROTECT EXISTING TREE ROOTS. SEE SPECIFICATION SECTION 01140 FOR ADDITIONAL INFORMATION.
- [J] REMOVE (E) WATER VALVE, ASSOCIATED VALVE BOX AND APPURTENANCES DOWN TO 2.5' BELOW GRADE.
- [K] REMOVE (E) BLOW OFF VALVE, ASSOCIATED VALVE BOX AND APPURTENANCES DOWN TO 2.5' BELOW GRADE.
- [L] ABANDON EXISTING VALVE AND REMOVE VALVE BOX RISER AND APPURTENANCES DOWN TO 2.5' BELOW GRADE.
- [Q] CONSTRUCT NEW HYDRANT SERVICE LATERAL PER DET A/C252



PHOTO - METER
SCALE: NO SCALE

1

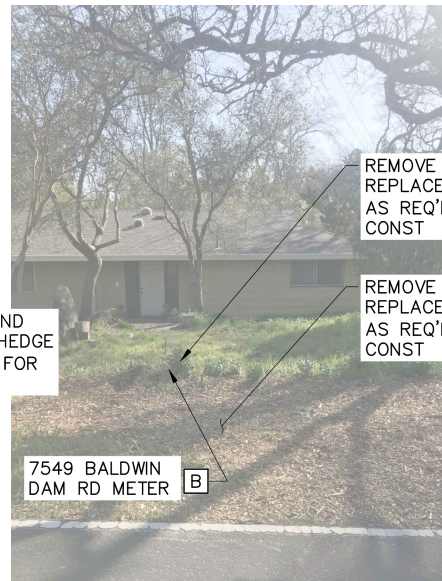


PHOTO - METER
SCALE: NO SCALE

2

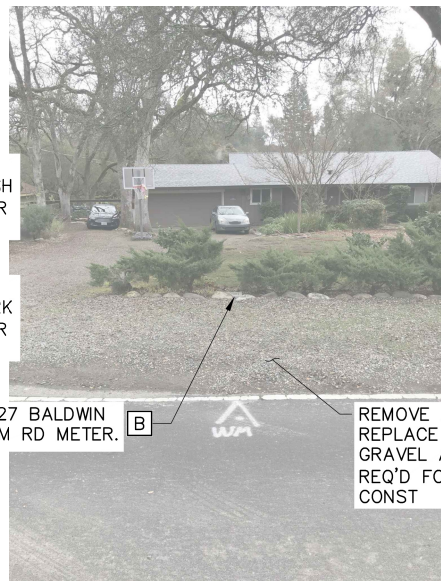


PHOTO - METER
SCALE: NO SCALE

3

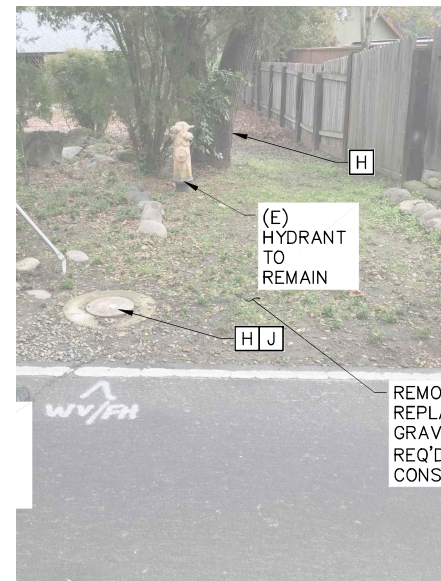


PHOTO - HYDRANT
SCALE: NO SCALE

4



PHOTO - METER
SCALE: NO SCALE

5

MATCH LINE H - SEE C207

6

5



4

3

2

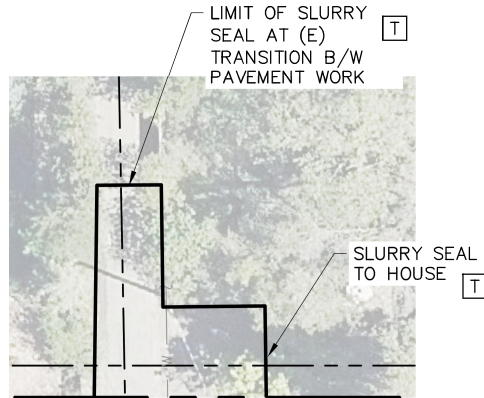
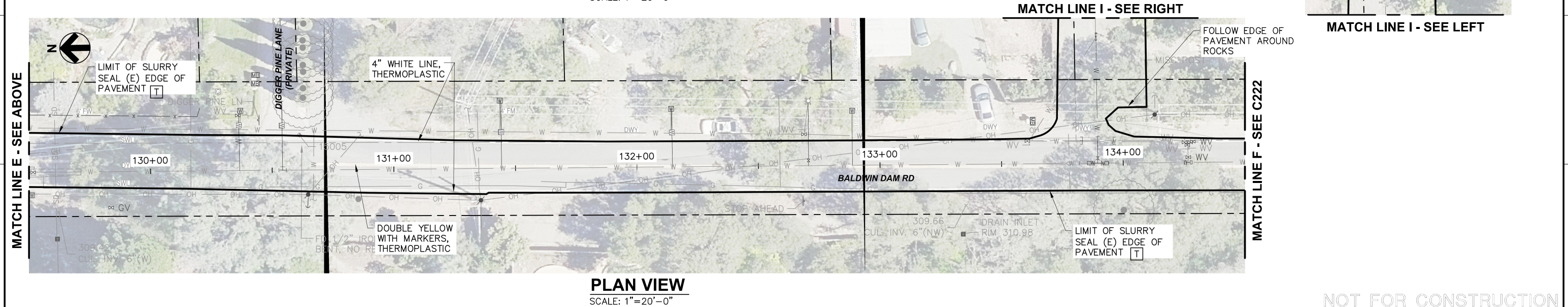
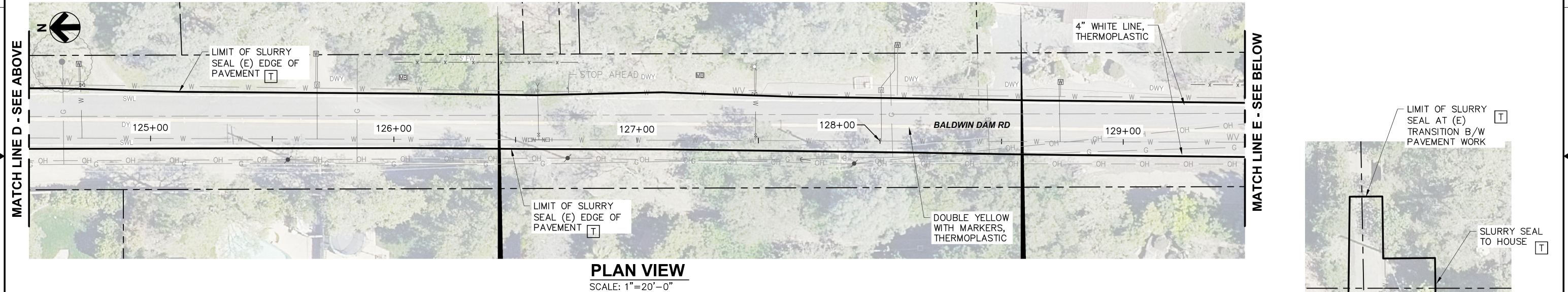
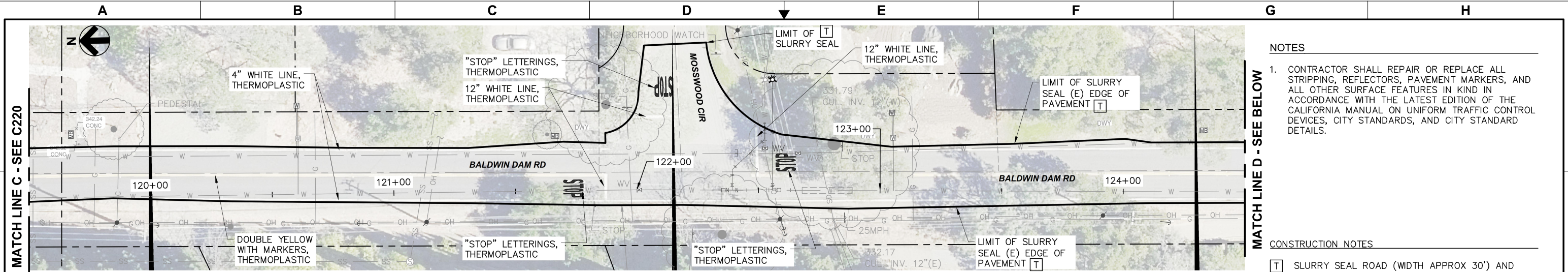
1

NOT FOR CONSTRUCTION

<div><p>10569 OLD PLACERVILLE ROAD SACRAMENTO, CA 95827 OFFICE: 916.364.1490</p></div>	<div><p>PAPER SIZE: 22X34 (ANSI D)</p><div></div><p>THIS BAR IS 1 INCH AT FULL SCALE. IF NOT, SCALE ACCORDINGLY.</p></div>	<div><p>JOB NO. 361-006</p><p>DATE 06/18/2021</p><p>DRAWN BY AGP/BF</p><p>DESIGNED BY BF</p><p>PROJ. MGR. ELJ</p></div>	<div><div></div><div></div><div></div><div></div><div></div><div></div><div></div><div></div><div></div><div></div><div></div><div></div><div></div><div></div><div></div><div></div><div></div><div></div><div></div><div></div><div></div><div></div><div></div><div></div><div></div><div></div><div></div><div></div><div></div><div></div><div></div><div></div><div></div><div></div><div></div><div></div><div></div><div></div><div></div><div></div><div></div><div></div><div></div><div></div><div></div><div></div><div></div><div></div><div></div><div></div><div></div><div></div><div></div><div></div><div></div><div></div><div></div><div></div><div></div><div></div><div></div><div></div><div></div><div></div><div></div><div></div><div></div><div></div><div></div><div></div><div></div><div></div><div></div><div></div><div></div><div></div><div></div><div></div><div></div><div></div><div></div><div></div><div></div><div></div><div></div><div></div><div></div><div></div><div></div><div></div><div></div><div></div><div></div><div></div><div></div><div></div><div></div><div></div><div></div><div></div><div></div><div></div><div></div><div></div><div></div><div></div><div></div><div></div><div></div><div></div><div></div><div></div><div></div><div></div><div></div><div></div><div></div><div></div><div></div><div></div><div></div><div></div><div></div><div></div><div></div><div></div><div></div><div></div><div></div><div></div><div></div><div></div><div></div><div></div><div></div><div></div><div></div><div></div><div></div><div></div><div></div><div></div><div></div><div></div><div></div><div></div><div></div><div></div><div></div><div></div><div></div><div></div><div></div><div></div><div></div><div></div><div></div><div></div><div></div><div></div><div></div><div></div><div></div><div></div><div></div><div></div><div></div><div></div><div></div><div></div><div></div><div></div><div></div><div></div><div></div><div></div><div></div><div></div><div></div><div></div><div></div><div></div><div></div><div></div><div></div><div></div><div></div><div></div><div></div><div></div><div></div><div></div><div></div><div></div><div></div><div></div><div></div><div></div><div></div><div></div><div></div><div></div><div></div><div></div><div></div><div></div><div></div><div></div><div></div><div></div><div></div><div></div><div></div><div></div><div></div><div></div><div></div><div></div><div></div><div></div><div></div><div></div><div></div><div></div><div></div><div></div><div></div><div></div><div></div><div></div><div></div><div></div><div></div><div></div><div></div><div></div><div></div><div></div><div></div><div></div><div></div><div></div><div></div><div></div><div></div><div></div><div></div><div></div><div></div><div></div><div></div><div></div><div></div><div></div><div></div><div></div><div></div><div></div><div></div><div></div><div></div><div></div><div></div><div></div><div></div><div></div><div></div><div></div><div></div><div></div><div></div><div></div><div></div><div></div><div></div><div></div><div></div><div></div><div></div><div></div><div></div><div></div><div></div><div></div><div></div><div></div><div></div><div></div><div></div><div></div><div></div><div></div><div></div><div></div><div></div><div></div><div></div><div></div><div></div><div></div><div></div><div></div><div></div><div></div><div></div><div></div><div></div><div></div><div></div><div></div><div></div><div></div><div></div><div></div><div></div><div></div><div></div><div></div><div></div><div></div><div></div><div></div><div></div><div></div><div></div><div></div><div></div><div></div><div></div><div></div><div></div><div></div><div></div><div></div><div></div><div></div><div></div><div></div><div></div><div></div><div></div><div></div><div></div><div></div><div></div><div></div><div></div><div></div><div></div><div></div><div></div><div></div><div></div><div></div><div></div><div></div><div></div><div></div><div></div><div></div><div></div><div></div><div></div><div></div><div></div><div></div><div></div><div></div><div></div><div></div><div></div><div></div><div></div><div></div><div></div><div></div><div></div><div></div><div></div><div></div><div></div><div></div><div></div><div></div><div></div><div></div><div></div><div></div><div></div><div></div><div></div><div></div><div></div><div></div><div></div><div></div><div></div><div></div><div></div><div></div><div></div><div></div><div></div><div></div><div></div><div></div><div></div><div></div><div></div><div></div><div></div><div></div><div></div><div></div><div></div><div></div><div></div><div></div><div></div><div></div><div></div><div></div><div></div><div></div><div></div><div></div><div></div><div></div><div></div><div></div><div></div><div></div><div></div><div></div><div></div><div></div><div></div><div></div><div></div><div></div><div></div><div></div><div></div><div></div><div></div><div></div><div></div><div></div><div></div><div></div><div></div><div></div><div></div><div></div><div></div><div></div><div></div><div></div><div></div><div></div><div></div><div></div><div></div><div></div><div></div><div></div><div></div><div></div><div></div><div></div><div></div><div></div><div></div><div></div><div></div><div></div><div></div><div></div><div></div><div></div><div></div><div></div><div></div><div></div><div></div><div></div><div></div><div></div><div></div><div></div><div></div><div></div><div></div><div></div><div></div><div></div><div></div><div></div><div></div><div></div><div></div><div></div><div></div><div></div><div></div><div></div><div></div><div></div><div></div><div></div><div></div><div></div><div></div><div></div><div></div><div></div><div></div><div></div><div></div><div></div><div></div><div></div><div></div><div></div><div></div><div></div><div></div><div></div><div></div><div></div><div></div><div></div><div></div><div></div><div></div><div></div><div></div><div></div><div></div><div></div><div></div><div></div><div></div><div></div><div></div><div></div><div></div><div></div><div></div><div></div><div></div><div></div><div></div><div></div><div></div><div></div><div></div><div></div><div></div><div></div><div></div><div></div><div></div><div></div><div></div><div></div><div></div><div></div><div></div><div></div><div></div><div></div><div></div><div></div><div></div><div></div><div></div><div></div><div></div><div></div><div></div><div></div><div></div><div></div><div></div><div></div><div></div><div></div><div></div><div></div><div></div><div></div><div></div><div></div><div></div><div></div><div></div><div></div><div></div><div></div><div></div><div></div><div></div><div></div><div></div><div></div><div></div><div></div><div></div><div></div><div></div><div></div><div></div><div></div><div></div><div></div><div></div><div></div><div></div><div></div><div></div><div></div><div></div><div></div><div></div><div></div><div></div><div></div><div></div><div></div><div></div><div></div><div></div><div></div><div></div><div></div><div></div><div></div><div></div><div></div><div></div><div></div><div></div><div></div><div></div><div></div><div></div><div></div><div></div><div></div><div></div><div></div><div></div><div></div><div></div><div></div><div></div><div></div><div></div><div></div><div></div><div></div><div></div><div></div><div></div><div></div><div></div><div></div><div></div><div></div><div></div><div></div><div></div><div></div><div></div><div></div><div></div><div></div><div></div><div></div><div></div><div></div><div></div><div></div><div></div><div></div><div></div><div></div><div></div><div></div><div></div><div></div><div></div><div></div><div></div><div></div><div></div><div></div><div></div><div></div><div></div><div></div><div></div><div></div><div></div><div></div><div></div><div></div><div></div><div></div><div></div><div></div><div></div><div></div><div></div><div></div><div></div><div></div><div></div><div></div><div></div><div></div><div></div><div></div><div></div><div></div><div></div><div></div><div></div><div></div><div></div><div></div><div></div><div></div><div></div><div></div><div></div><div></div><div></div><div></div><div></div><div></div><div></div><div></div><div></div><div></div><div></div><div></div><div></div><div></div><div></div><div></div><div></div><div></div><div></div><div></div><div></div><div></div><div></div><div></div><div></div><div></div><div></div><div></div><div></div><div></div><div></div><div></div><div></div><div></div><div></div><div></div><div></div><div></div><div></div><div></div><div></div><div></div><div></div><div></div><div></div><div></div><div></div><div></div><div></div><div></div><div></div><div></div><div></div><div></div><div></div><div></div><div></div><div></div><div></div><div></div><div></div><div></div><div></div><div></div><div></div><div></div><div></div><div></div><div></div><div></div><div></div><div></div><div></div><div></div><div></div><div></div><div></div><div></div><div></div><div></div><div></div><div></div><div></div><div></div><div></div><div></div><div></div><div></div><div></div><div></div><div></div><div></div><div></div><div></div><div></div><div></div><div></div><div></div><div></div><div></div><div></div><div></div><div></div><div></div><div></div><div></div><div></div><div></div><div></div><div></div><div></div><div></div><div></div><div></div><div></div><div></div><div></div><div></div><div></div><div></div><div></div><div></div><div></div><div></div><div></div><div></div><div></div><div></div><div></div><div></div><div></div><div></div><div></div><div></div><div></div><div></div><div></div><div></div><div></div><div></div><div></div><div></div><div></div><div></div><div></div><div></div><div></div><div></div><div></div><div></div><div></div><div></div><div></div><div></div><div></div><div></div><div></div><div></div><div></div><div></div><div></div><div></div><div></div><div></div><div></div><div></div><div></div><div></div><div></div><div></div><div></div><div></div><div></div><div></div><div></div><div></div><div></div><div></div><div></div><div></div><div></div><div></div><div></div><div></div><div></div><div></div><div></div><div></div><div></div><div></div><div></div><div></div><div></div><div></div><div></div><div></div><div></div><div></div><div></div><div></div><div></div><div></div><div></div><div></div><div></div><div></div><div></div><div></div><div></div><div></div><div></div><div></div><div></div><div></div><div></div><div></div><div></div><div></div><div></div><div></div><div></div><div></div><div></div><div></div><div></div><div></div><div></div><div></div><div></div><div></div><div></div><div></div><div></div><div></div><div></div><div></div><div></div><div></div><div></div><div></div><div></div><div></div><div></div><div></div><div></div><div></div><div></div><div></div><div></div><div></div><div></div><div></div><div></div><div></div><div></div><div></div><div></div><div></div><div></div><div></div><div></div><div></div><div></div><div></div><div></div><div></div><div></div><div></div><div></div><div></div><div></div><div></div><div></div><div></div><div></div><div></div><div></div><div></div><div></div><div></div><div></div><div></div><div></div><div></div><div></div><div></div><div></div><div></div><div></div><div></div><div></div><div></div><div></div><div></div><div></div><div></div><div></div><div></div><div></div><div></div><div></div><div></div><div></div><div></div><div></div><div></div><div></div><div></div><div></div><div></div><div></div><div></div><div></div><div></div><div></div><div></div><div></div><div></div><div></div><div></div><div></div><div></div><div></div><div></div><div></div><div></div><div></div><div></div><div></div><div></div><div></div></div>
--	---	---	--

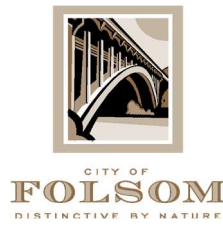
A B C D E F G H

File Name: S:\common\projects\361-City of Folsom\006-Ashland II Project\04-Design\Drawings\03-Civil\361-006-C220 to C222 Roads.dwg
Plotted By: ANTHONY PEREZ
Plot Date: 6/18/2021 9:45 AM



NOT FOR CONSTRUCTION

HydroScience 10569 OLD PLACERVILLE ROAD SACRAMENTO, CA 95827 OFFICE: 916.364.1490	PAPER SIZE: 22X34 (ANSI D) 0" 12" 1" THIS BAR IS 1 INCH AT FULL SCALE. IF NOT, SCALE ACCORDINGLY.	JOB NO. 361-006 DATE 06/18/2021 DRAWN BY AGP/BF DESIGNED BY BF PROJ. MGR. ELJ	REV DESCRIPTION DATE APVD	 CITY OF FOLSOM ENVIRONMENTAL AND WATER RESOURCES	ASHLAND WATER REHABILITATION PROJECT II	SLURRY SEAL AND STRIPING PLAN - STA 119+50 TO 134+50	90% SUBMITTAL JUNE 2021	C221 DRAWING NUMBER SHEET 19 OF 27
---	--	---	------------------------------------	--	---	---	-------------------------------	---



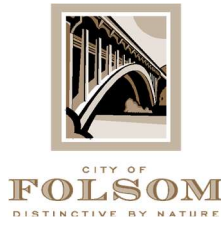
ENVIRONMENTAL AND WATER RESOURCES DEPT
50 NATOMA STREET
FOLSOM, CALIFORNIA 95630

PH: 916.461.6162
FAX: 916.351.8912

7535 Baldwin Dam Road, Folsom, CA 95630

Construction Notes:

1. Contractor shall give resident door hanger notification 14 days prior, 7 days prior, and 3 days prior, and knock-on door notification the day of for the following conditions:
 - a. Any water shut off affecting the property.
 - b. Any construction work occurring on the property.
2. Contractor shall take preconstruction photographs of all existing property condition in the area of Baldwin Dam Road, Mosswood Circle, and Valley Pines Drive.
3. Contractor shall protect existing softscape. Softscape includes but is not limited to grass, bark, trees, shrubs, etc. Contractor shall use protective measures to protect softscape from equipment damage. Any damage to existing softscape shall be repaired or replaced to pre-construction conditions or better.
4. Contractor shall protect all existing hardscape. Hardscape includes but is not limited to concrete, asphalt, AB, etc. Contractor shall use protective measures such as plywood and rubber tracks to protect hardscape from equipment damage. Any damage to existing hardscape shall be repaired or replaced to pre-construction conditions or better.
5. Contractor shall locate and protect existing irrigation and landscape lighting to the best of their ability. Any necessary modifications to existing systems as a result of the proposed project improvements will be identified and brought to the attention of the City and Engineer prior to construction.



Tree Management During Construction

1. The applicant shall retain the services of a project arborist for the duration of the project to monitor the health of trees to be preserved and ensure appropriate tree management actions take place in accordance with the most recent version of the International Society of Arboriculture's *Best Management Practices* - "Managing Trees During Construction" and the City of Folsom's Tree Care and Maintenance Standards. All construction activities conducted within the Critical Root Zone (CRZ) of trees shall be performed under the direct supervision of the project arborist.
2. Any necessary root severance shall be performed with sharp, sterile hand tools. Roots that have been ripped, torn, or crushed shall be traced by to undamaged tissue and cut cleanly, resulting in a flat surface with the adjacent bark firmly attached.
3. Roots exposed from grade cuts or trenching shall not be allowed to dry out. If roots will be exposed overnight or if directed by the project arborist, the cut faces shall be moistened and covered until backfilled.
4. Any pruning for construction clearance shall be performed by or under the direct supervision of the project arborist.
5. The following actions are prohibited within the CRZ:
 - a. Parking of vehicles, equipment, or storage of material, unless otherwise approved by the City
 - b. Wounding or breaking tree trunks or branches through contact with vehicles or heavy equipment
 - c. Contamination of soil by washing out equipment or conducting vehicle maintenance.
6. A certification letter by the project arborist attesting compliance with these requirements shall be submitted to the City upon project completion.

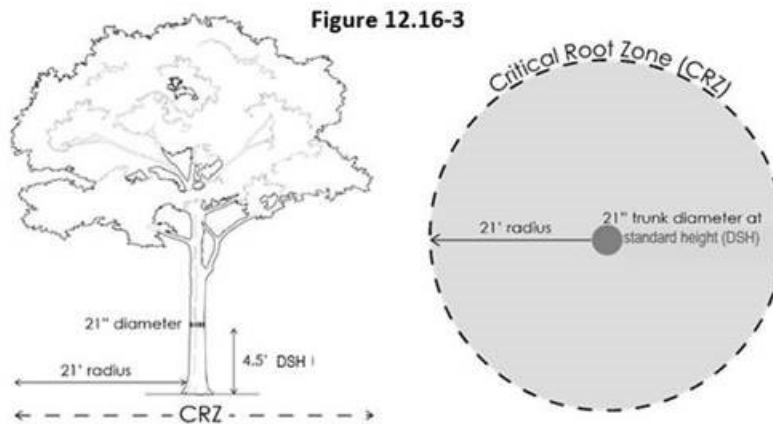


CITY OF
FOLSOM
DISTINCTIVE BY NATURE

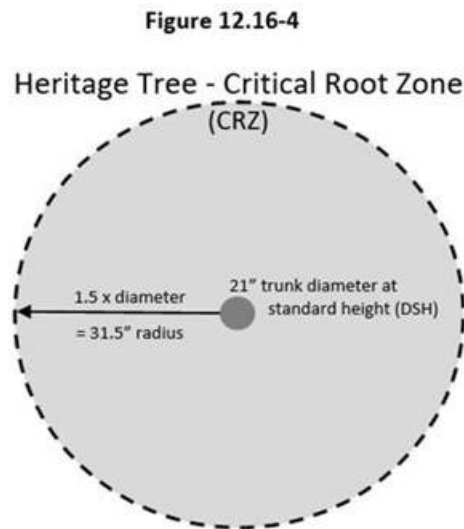
ENVIRONMENTAL AND WATER RESOURCES DEPT
50 NATOMA STREET
FOLSOM, CALIFORNIA 95630

PH: 916.461.6162
FAX: 916.351.8912

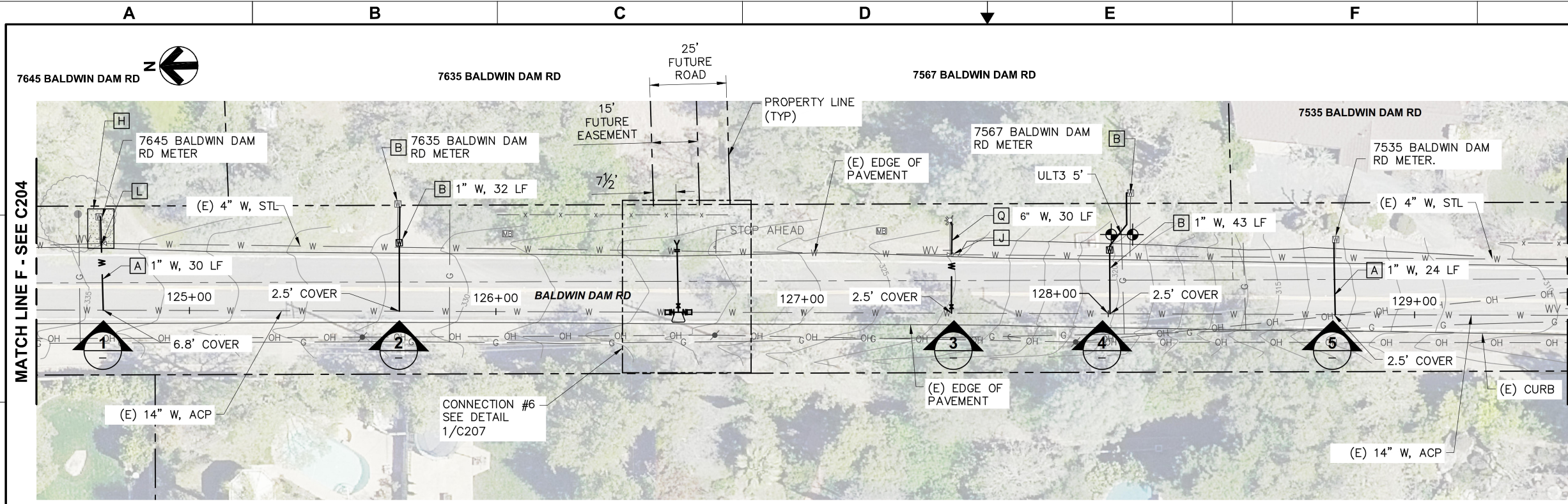
“Critical root zone (CRZ)” means the area of soil extending from the tree trunk where roots required for future tree health and survival are located. This critical root zone area for all trees except heritage trees is a circle with a minimum radius of one foot for every one inch in trunk diameter at DSH. Refer to Figure 12.16-3.



For heritage trees, the critical root zone area shall be a circle with a minimum radius of one and one-half feet for every one inch in trunk diameter at DSH, unless reduced by the city arborist. Refer to Figure 12.16-4.



File Name: S:\common\projects\361-City of Folsom\006-Ashland II Project\04-Design\Drawings\03-Civil\361-006-C205 to C205 Pipeline.dwg
Plot Date: 6/18/2021 9:39 AM
Plotted By: ANTHONY PEREZ



PLAN VIEW
SCALE: 1"=20'-0"



PHOTO - METER
SCALE: NO SCALE

1

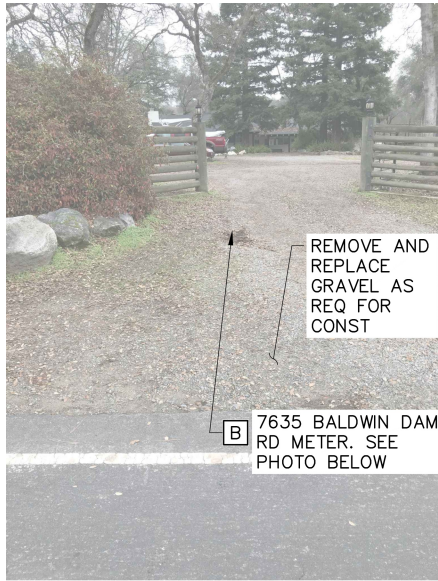


PHOTO - METER
SCALE: NO SCALE

2



PHOTO - HYDRANT
SCALE: NO SCALE

3

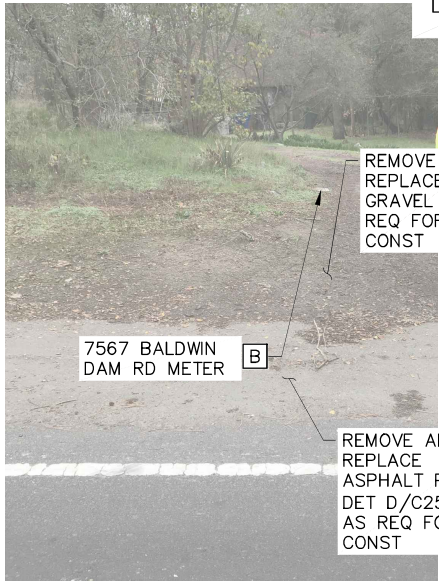


PHOTO - METER
SCALE: NO SCALE

4

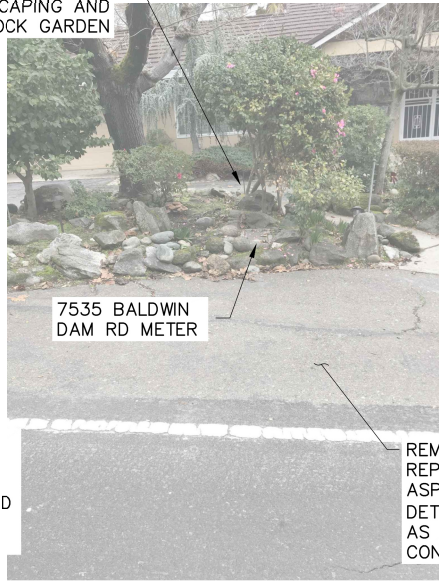


PHOTO - METER
SCALE: NO SCALE

5

NOTES

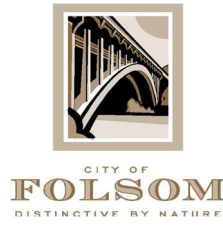
1. POTHOLE TO VERIFY LOCATION, SIZE AND MATERIAL OF EXISTING WATER MAIN PRIOR TO ORDERING PIPING AND CONNECTION FITTINGS.
2. WATER SERVICE LATERAL IMPROVEMENTS NOT REQ'D FOR THIS ADDRESS.
3. FOR WORK WITHIN THE ROADWAY BACKFILL AND RESTORE ASPHALT ROAD SECTION USING T-CUT AND GRIND ON ALL SIDES OF THE EXCAVATION PER DET D/253.
4. FOR WORK OUTSIDE OF THE ROADWAY BACKFILL PER DET A/C253 AND RESTORE ALL EXISTING SURFACE CONDITIONS AS SHOWN IN PHOTO REFERENCE, SPECIFICATIONS AND SIGNED RIGHT OF ENTRY AGREEMENTS.
5. SEE SEQUENCE OF OPERATION NOTES ON DWG G005 FOR OPERATION DURING THE DECOMMISSIONING PROCESS. CONTRACTOR TO NOTE THAT EXISTING MAIN MUST REMAIN IN SERVICE DURING THIS TIME AND THAT DECOMMISSIONING OF EXISTING MAIN CANNOT COMMENCE WITHOUT WRITTEN CITY APPROVAL.
6. REMOVE (E) WATER MAIN AS REQ'D TO INSTALL NEW MAIN TIE-INS.

CONSTRUCTION NOTES

- [A] CONSTRUCT NEW WATER SERVICE LATERAL AND CONNECT TO EXISTING EXISTING WATER SERVICE AT UPSTREAM END OF EXISTING METER PER DET C/C250. ALL ASSOCIATED METER APPURTENANCES UPSTREAM OF METER SHALL BE REPLACED.
- [B] CONSTRUCT NEW WATER SERVICE LATERAL WITH NEW METER BOX PER DET A/C250. REMOVE EXISTING METER BOX, METER, ANGLE METER STOP AND ALL OTHER ASSOCIATED METER APPURTENANCES AND CONNECT TO EXISTING WATER SERVICE PIPING.
- [H] ALL EXCAVATION WORK IDENTIFIED WITHIN THE SHADED AREA, WHETHER INSIDE OR OUTSIDE OF THE CRITICAL ROOT ZONE, MUST BE ACCOMPLISHED BY USE OF HAND DIGGING TO PRESERVE AND PROTECT EXISTING TREE ROOTS. SEE SPECIFICATION SECTION 01140 FOR ADDITIONAL INFORMATION.
- [J] REMOVE (E) WATER VALVE, ASSOCIATED VALVE BOX AND APPURTENANCES DOWN TO 2.5' BELOW GRADE.
- [L] ABANDON EXISTING VALVE AND REMOVE VALVE BOX RISER AND APPURTENANCES DOWN TO 2.5' BELOW GRADE.
- [Q] CONSTRUCT NEW HYDRANT SERVICE LATERAL PER DET A/C252

NOT FOR CONSTRUCTION

 10569 OLD PLACERVILLE ROAD SACRAMENTO, CA 95827 OFFICE: 916.364.1490	PAPER SIZE: 22X34 (ANSI D) 0" 12" 1" THIS BAR IS 1 INCH AT FULL SCALE. IF NOT, SCALE ACCORDINGLY.	JOB NO. 361-006 DATE 06/18/2021 DRAWN BY AGP/BF DESIGNED BY BF PROJ. MGR. ELJ	REV DESCRIPTION DATE APVD	 CITY OF FOLSOM ENVIRONMENTAL AND WATER RESOURCES	ASHLAND WATER REHABILITATION PROJECT II	PLAN & PHOTOS - BALDWIN DAM ROAD - STA 124+50 TO 129+50	90% SUBMITTAL JUNE 2021	C205 DRAWING NUMBER SHEET 11 OF 27
--	---	---	------------------------------------	---	---	---	----------------------------	--



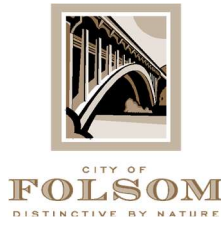
ENVIRONMENTAL AND WATER RESOURCES DEPT
50 NATOMA STREET
FOLSOM, CALIFORNIA 95630

PH: 916.461.6162
FAX: 916.351.8912

7567 Baldwin Dam Road, Folsom, CA 95630

Construction Notes:

1. Contractor shall give resident door hanger notification 14 days prior, 7 days prior, and 3 days prior, and knock-on door notification the day of for the following conditions:
 - a. Any water shut off affecting the property.
 - b. Any construction work occurring on the property.
2. Contractor shall take preconstruction photographs of all existing property condition in the area of Baldwin Dam Road, Mosswood Circle, and Valley Pines Drive.
3. Contractor shall protect existing softscape. Softscape includes but is not limited to grass, bark, trees, shrubs, etc. Contractor shall use protective measures to protect softscape from equipment damage. Any damage to existing softscape shall be repaired or replaced to pre-construction conditions or better.
4. Contractor shall protect all existing hardscape. Hardscape includes but is not limited to concrete, asphalt, AB, etc. Contractor shall use protective measures such as plywood and rubber tracks to protect hardscape from equipment damage. Any damage to existing hardscape shall be repaired or replaced to pre-construction conditions or better.
5. Contractor shall locate and protect existing irrigation and landscape lighting to the best of their ability. Any necessary modifications to existing systems as a result of the proposed project improvements will be identified and brought to the attention of the City and Engineer prior to construction.



Tree Management During Construction

1. The applicant shall retain the services of a project arborist for the duration of the project to monitor the health of trees to be preserved and ensure appropriate tree management actions take place in accordance with the most recent version of the International Society of Arboriculture's *Best Management Practices* - "Managing Trees During Construction" and the City of Folsom's Tree Care and Maintenance Standards. All construction activities conducted within the Critical Root Zone (CRZ) of trees shall be performed under the direct supervision of the project arborist.
2. Any necessary root severance shall be performed with sharp, sterile hand tools. Roots that have been ripped, torn, or crushed shall be traced by to undamaged tissue and cut cleanly, resulting in a flat surface with the adjacent bark firmly attached.
3. Roots exposed from grade cuts or trenching shall not be allowed to dry out. If roots will be exposed overnight or if directed by the project arborist, the cut faces shall be moistened and covered until backfilled.
4. Any pruning for construction clearance shall be performed by or under the direct supervision of the project arborist.
5. The following actions are prohibited within the CRZ:
 - a. Parking of vehicles, equipment, or storage of material, unless otherwise approved by the City
 - b. Wounding or breaking tree trunks or branches through contact with vehicles or heavy equipment
 - c. Contamination of soil by washing out equipment or conducting vehicle maintenance.
6. A certification letter by the project arborist attesting compliance with these requirements shall be submitted to the City upon project completion.

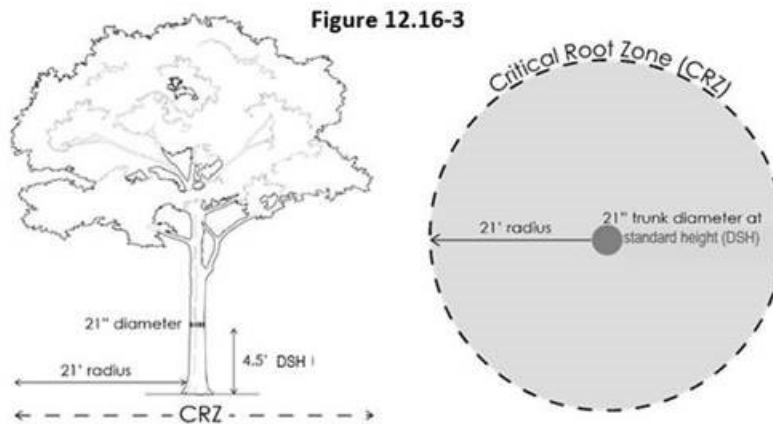


CITY OF
FOLSOM
DISTINCTIVE BY NATURE

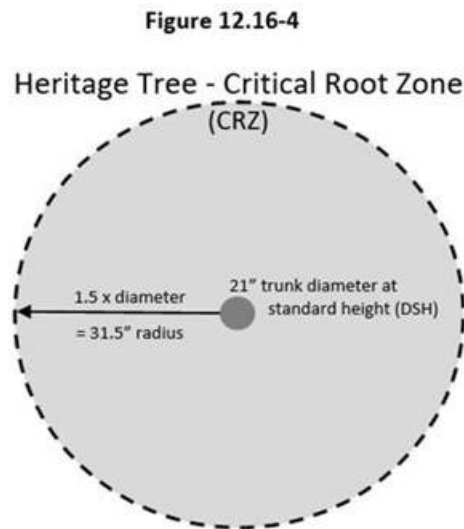
ENVIRONMENTAL AND WATER RESOURCES DEPT
50 NATOMA STREET
FOLSOM, CALIFORNIA 95630

PH: 916.461.6162
FAX: 916.351.8912

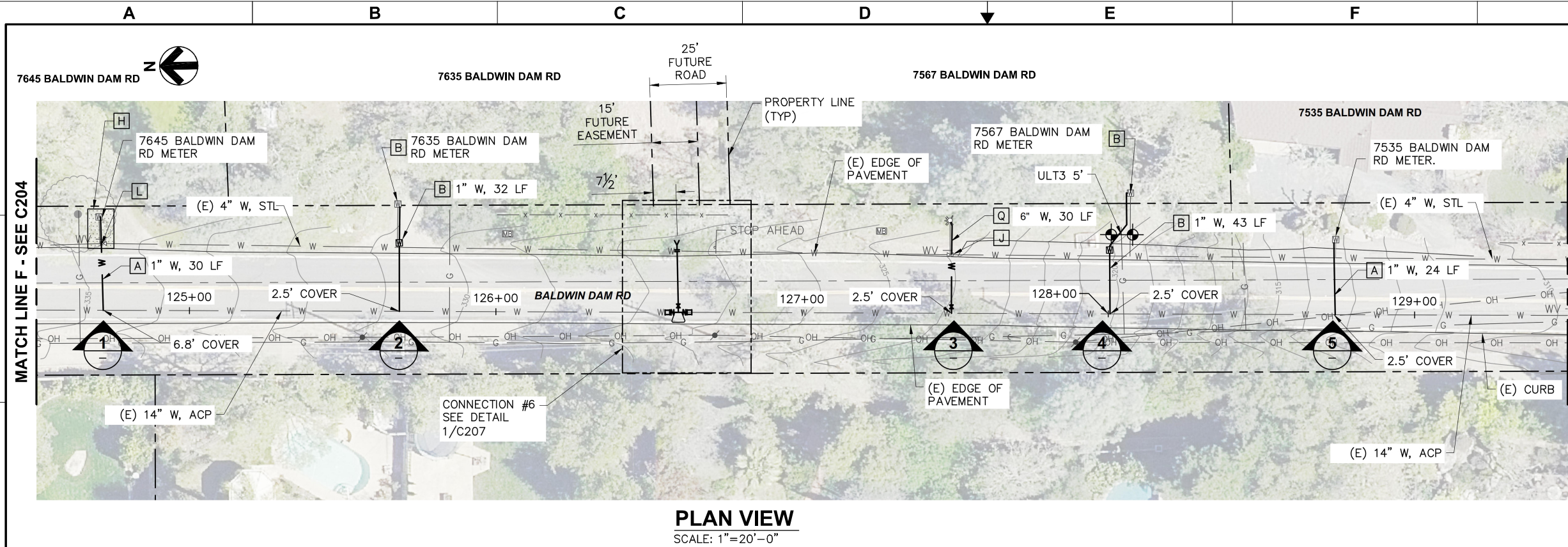
“Critical root zone (CRZ)” means the area of soil extending from the tree trunk where roots required for future tree health and survival are located. This critical root zone area for all trees except heritage trees is a circle with a minimum radius of one foot for every one inch in trunk diameter at DSH. Refer to Figure 12.16-3.



For heritage trees, the critical root zone area shall be a circle with a minimum radius of one and one-half feet for every one inch in trunk diameter at DSH, unless reduced by the city arborist. Refer to Figure 12.16-4.



File Name: S:\common\projects\361-City of Folsom\006-Ashland II Project\04-Design\Drawings\03-Civil\361-006-C205 to C205 Pipeline.dwg
Plot Date: 6/18/2021 9:39 AM
Plotted By: ANTHONY PEREZ



PLAN VIEW
SCALE: 1"=20'-0"



PHOTO - METER
SCALE: NO SCALE

1

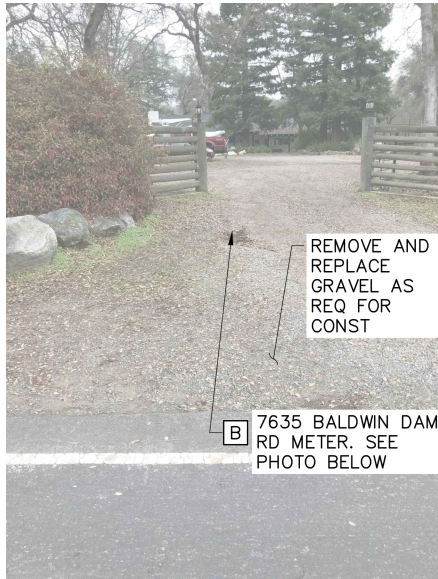


PHOTO - METER
SCALE: NO SCALE

2



PHOTO - HYDRANT
SCALE: NO SCALE

3



PHOTO - METER
SCALE: NO SCALE

4

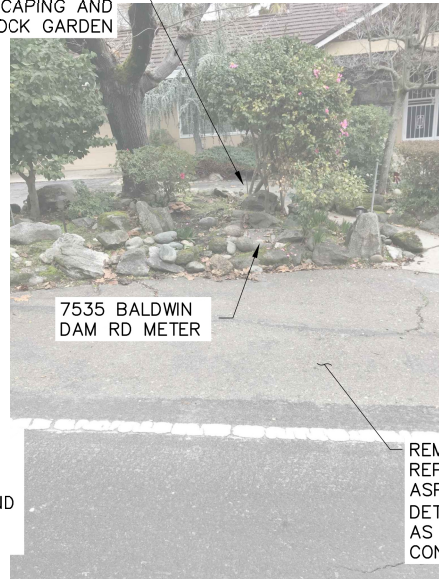


PHOTO - METER
SCALE: NO SCALE

5

NOTES

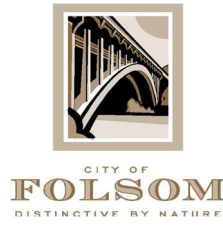
1. POTHOLE TO VERIFY LOCATION, SIZE AND MATERIAL OF EXISTING WATER MAIN PRIOR TO ORDERING PIPING AND CONNECTION FITTINGS.
2. WATER SERVICE LATERAL IMPROVEMENTS NOT REQ'D FOR THIS ADDRESS.
3. FOR WORK WITHIN THE ROADWAY BACKFILL AND RESTORE ASPHALT ROAD SECTION USING T-CUT AND GRIND ON ALL SIDES OF THE EXCAVATION PER DET D/253.
4. FOR WORK OUTSIDE OF THE ROADWAY BACKFILL PER DET A/C253 AND RESTORE ALL EXISTING SURFACE CONDITIONS AS SHOWN IN PHOTO REFERENCE, SPECIFICATIONS AND SIGNED RIGHT OF ENTRY AGREEMENTS.
5. SEE SEQUENCE OF OPERATION NOTES ON DWG G005 FOR OPERATION DURING THE DECOMMISSIONING PROCESS. CONTRACTOR TO NOTE THAT EXISTING MAIN MUST REMAIN IN SERVICE DURING THIS TIME AND THAT DECOMMISSIONING OF EXISTING MAIN CANNOT COMMENCE WITHOUT WRITTEN CITY APPROVAL.
6. REMOVE (E) WATER MAIN AS REQ'D TO INSTALL NEW MAIN TIE-INS.

CONSTRUCTION NOTES

- [A] CONSTRUCT NEW WATER SERVICE LATERAL AND CONNECT TO EXISTING EXISTING WATER SERVICE AT UPSTREAM END OF EXISTING METER PER DET C/C250. ALL ASSOCIATED METER APPURTENANCES UPSTREAM OF METER SHALL BE REPLACED.
- [B] CONSTRUCT NEW WATER SERVICE LATERAL WITH NEW METER BOX PER DET A/C250. REMOVE EXISTING METER BOX, METER, ANGLE METER STOP AND ALL OTHER ASSOCIATED METER APPURTENANCES AND CONNECT TO EXISTING WATER SERVICE PIPING.
- [H] ALL EXCAVATION WORK IDENTIFIED WITHIN THE SHADED AREA, WHETHER INSIDE OR OUTSIDE OF THE CRITICAL ROOT ZONE, MUST BE ACCOMPLISHED BY USE OF HAND DIGGING TO PRESERVE AND PROTECT EXISTING TREE ROOTS. SEE SPECIFICATION SECTION 01140 FOR ADDITIONAL INFORMATION.
- [J] REMOVE (E) WATER VALVE, ASSOCIATED VALVE BOX AND APPURTENANCES DOWN TO 2.5' BELOW GRADE.
- [L] ABANDON EXISTING VALVE AND REMOVE VALVE BOX RISER AND APPURTENANCES DOWN TO 2.5' BELOW GRADE.
- [Q] CONSTRUCT NEW HYDRANT SERVICE LATERAL PER DET A/C252

NOT FOR CONSTRUCTION

HydroScience 10569 OLD PLACERVILLE ROAD SACRAMENTO, CA 95827 OFFICE: 916.364.1490	PAPER SIZE: 22X34 (ANSI D) 0" 12" 1" THIS BAR IS 1 INCH AT FULL SCALE. IF NOT, SCALE ACCORDINGLY.	JOB NO. 361-006 DATE 06/18/2021 DRAWN BY AGP/BF DESIGNED BY BF PROJ. MGR. ELJ	REVISIONS				ASHLAND WATER REHABILITATION PROJECT II	PLAN & PHOTOS - BALDWIN DAM ROAD - STA 124+50 TO 129+50	90% SUBMITTAL JUNE 2021	C205 DRAWING NUMBER SHEET 11 OF 27
			REV	DESCRIPTION	DATE					



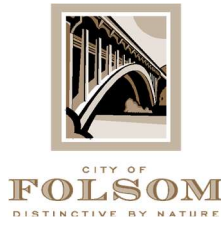
ENVIRONMENTAL AND WATER RESOURCES DEPT
50 NATOMA STREET
FOLSOM, CALIFORNIA 95630

PH: 916.461.6162
FAX: 916.351.8912

7635 Baldwin Dam Road, Folsom, CA 95630

Construction Notes:

1. Contractor shall give resident door hanger notification 14 days prior, 7 days prior, and 3 days prior, and knock-on door notification the day of for the following conditions:
 - a. Any water shut off affecting the property.
 - b. Any construction work occurring on the property.
2. Contractor shall take preconstruction photographs of all existing property condition in the area of Baldwin Dam Road, Mosswood Circle, and Valley Pines Drive.
3. Contractor shall protect existing softscape. Softscape includes but is not limited to grass, bark, trees, shrubs, etc. Contractor shall use protective measures to protect softscape from equipment damage. Any damage to existing softscape shall be repaired or replaced to pre-construction conditions or better.
4. Contractor shall protect all existing hardscape. Hardscape includes but is not limited to concrete, asphalt, AB, etc. Contractor shall use protective measures such as plywood and rubber tracks to protect hardscape from equipment damage. Any damage to existing hardscape shall be repaired or replaced to pre-construction conditions or better.
5. Contractor shall locate and protect existing irrigation and landscape lighting to the best of their ability. Any necessary modifications to existing systems as a result of the proposed project improvements will be identified and brought to the attention of the City and Engineer prior to construction.



Tree Management During Construction

1. The applicant shall retain the services of a project arborist for the duration of the project to monitor the health of trees to be preserved and ensure appropriate tree management actions take place in accordance with the most recent version of the International Society of Arboriculture's *Best Management Practices* - "Managing Trees During Construction" and the City of Folsom's Tree Care and Maintenance Standards. All construction activities conducted within the Critical Root Zone (CRZ) of trees shall be performed under the direct supervision of the project arborist.
2. Any necessary root severance shall be performed with sharp, sterile hand tools. Roots that have been ripped, torn, or crushed shall be traced by to undamaged tissue and cut cleanly, resulting in a flat surface with the adjacent bark firmly attached.
3. Roots exposed from grade cuts or trenching shall not be allowed to dry out. If roots will be exposed overnight or if directed by the project arborist, the cut faces shall be moistened and covered until backfilled.
4. Any pruning for construction clearance shall be performed by or under the direct supervision of the project arborist.
5. The following actions are prohibited within the CRZ:
 - a. Parking of vehicles, equipment, or storage of material, unless otherwise approved by the City
 - b. Wounding or breaking tree trunks or branches through contact with vehicles or heavy equipment
 - c. Contamination of soil by washing out equipment or conducting vehicle maintenance.
6. A certification letter by the project arborist attesting compliance with these requirements shall be submitted to the City upon project completion.

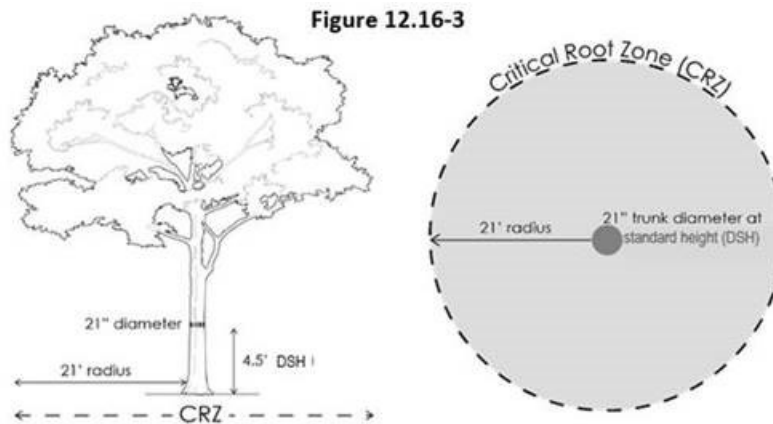


CITY OF
FOLSOM
DISTINCTIVE BY NATURE

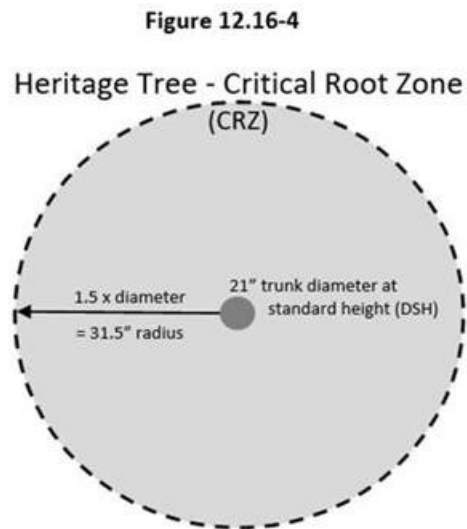
ENVIRONMENTAL AND WATER RESOURCES DEPT
50 NATOMA STREET
FOLSOM, CALIFORNIA 95630

PH: 916.461.6162
FAX: 916.351.8912

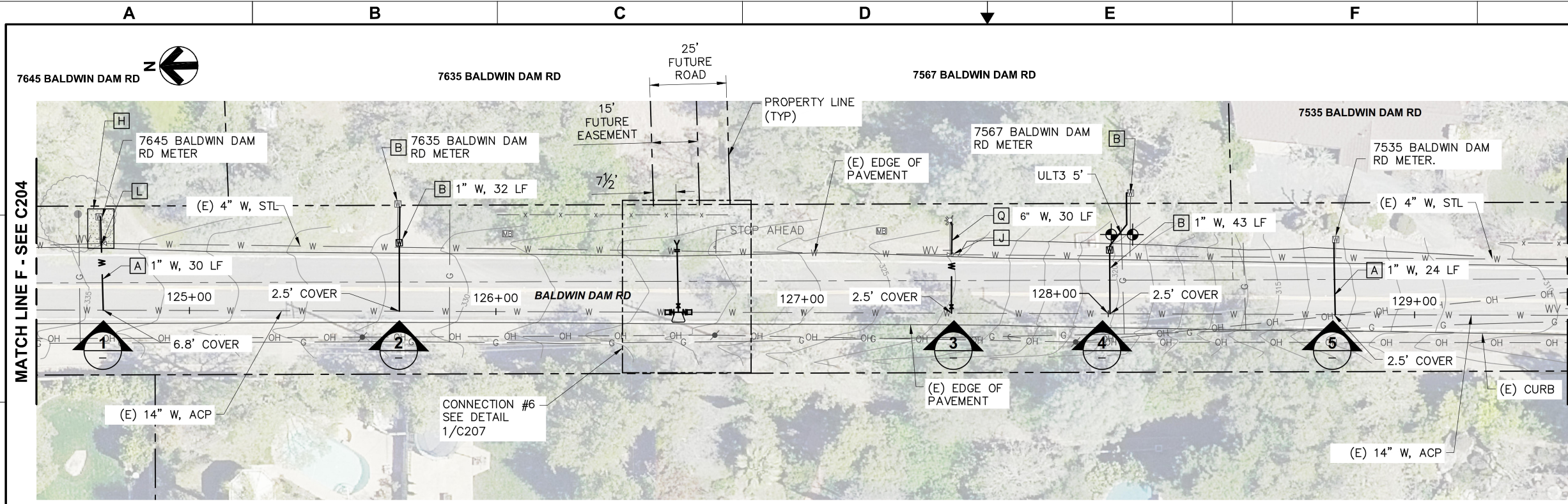
“Critical root zone (CRZ)” means the area of soil extending from the tree trunk where roots required for future tree health and survival are located. This critical root zone area for all trees except heritage trees is a circle with a minimum radius of one foot for every one inch in trunk diameter at DSH. Refer to Figure 12.16-3.



For heritage trees, the critical root zone area shall be a circle with a minimum radius of one and one-half feet for every one inch in trunk diameter at DSH, unless reduced by the city arborist. Refer to Figure 12.16-4.



File Name: S:\common\projects\361-City of Folsom\006-Ashland II Project\04-Design\Drawings\03-Civil\361-006-C205 to C205 Pipeline.dwg
Plot Date: 6/18/2021 9:39 AM
Plotted By: ANTHONY PEREZ



PLAN VIEW
SCALE: 1"=20'-0"



PHOTO - METER
SCALE: NO SCALE

1

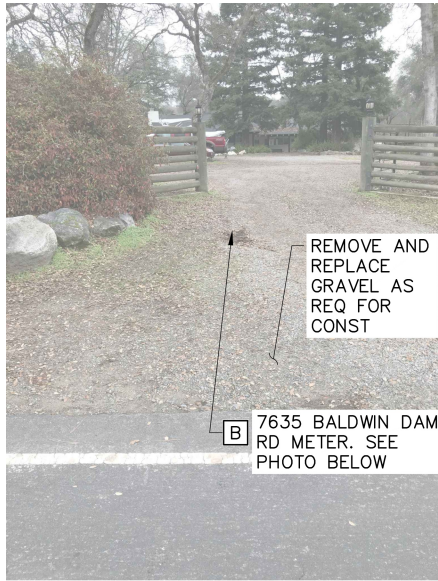


PHOTO - METER
SCALE: NO SCALE

2



PHOTO - HYDRANT
SCALE: NO SCALE

3



PHOTO - METER
SCALE: NO SCALE

4

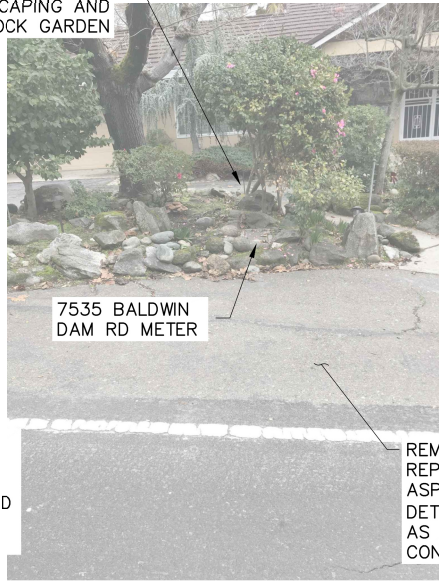


PHOTO - METER
SCALE: NO SCALE

5

NOTES

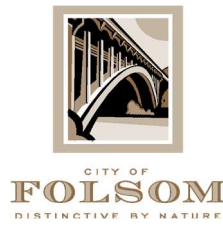
1. POTHOLE TO VERIFY LOCATION, SIZE AND MATERIAL OF EXISTING WATER MAIN PRIOR TO ORDERING PIPING AND CONNECTION FITTINGS.
2. WATER SERVICE LATERAL IMPROVEMENTS NOT REQ'D FOR THIS ADDRESS.
3. FOR WORK WITHIN THE ROADWAY BACKFILL AND RESTORE ASPHALT ROAD SECTION USING T-CUT AND GRIND ON ALL SIDES OF THE EXCAVATION PER DET D/253.
4. FOR WORK OUTSIDE OF THE ROADWAY BACKFILL PER DET A/C253 AND RESTORE ALL EXISTING SURFACE CONDITIONS AS SHOWN IN PHOTO REFERENCE, SPECIFICATIONS AND SIGNED RIGHT OF ENTRY AGREEMENTS.
5. SEE SEQUENCE OF OPERATION NOTES ON DWG G005 FOR OPERATION DURING THE DECOMMISSIONING PROCESS. CONTRACTOR TO NOTE THAT EXISTING MAIN MUST REMAIN IN SERVICE DURING THIS TIME AND THAT DECOMMISSIONING OF EXISTING MAIN CANNOT COMMENCE WITHOUT WRITTEN CITY APPROVAL.
6. REMOVE (E) WATER MAIN AS REQ'D TO INSTALL NEW MAIN TIE-INS.

CONSTRUCTION NOTES

- [A] CONSTRUCT NEW WATER SERVICE LATERAL AND CONNECT TO EXISTING EXISTING WATER SERVICE AT UPSTREAM END OF EXISTING METER PER DET C/C250. ALL ASSOCIATED METER APPURTENANCES UPSTREAM OF METER SHALL BE REPLACED.
- [B] CONSTRUCT NEW WATER SERVICE LATERAL WITH NEW METER BOX PER DET A/C250. REMOVE EXISTING METER BOX, METER, ANGLE METER STOP AND ALL OTHER ASSOCIATED METER APPURTENANCES AND CONNECT TO EXISTING WATER SERVICE PIPING.
- [H] ALL EXCAVATION WORK IDENTIFIED WITHIN THE SHADED AREA, WHETHER INSIDE OR OUTSIDE OF THE CRITICAL ROOT ZONE, MUST BE ACCOMPLISHED BY USE OF HAND DIGGING TO PRESERVE AND PROTECT EXISTING TREE ROOTS. SEE SPECIFICATION SECTION 01140 FOR ADDITIONAL INFORMATION.
- [J] REMOVE (E) WATER VALVE, ASSOCIATED VALVE BOX AND APPURTENANCES DOWN TO 2.5' BELOW GRADE.
- [L] ABANDON EXISTING VALVE AND REMOVE VALVE BOX RISER AND APPURTENANCES DOWN TO 2.5' BELOW GRADE.
- [Q] CONSTRUCT NEW HYDRANT SERVICE LATERAL PER DET A/C252

NOT FOR CONSTRUCTION

 10569 OLD PLACERVILLE ROAD SACRAMENTO, CA 95827 OFFICE: 916.364.1490	PAPER SIZE: 22X34 (ANSI D) 	JOB NO. 361-006 DATE 06/18/2021 DRAWN BY AGP/BF DESIGNED BY BF PROJ. MGR. ELJ	REV	DESCRIPTION	DATE	APVD	 CITY OF FOLSOM ENVIRONMENTAL AND WATER RESOURCES	ASHLAND WATER REHABILITATION PROJECT II	PLAN & PHOTOS - BALDWIN DAM ROAD - STA 124+50 TO 129+50	90% SUBMITTAL JUNE 2021	C205 DRAWING NUMBER SHEET 11 OF 27
		REVISIONS									



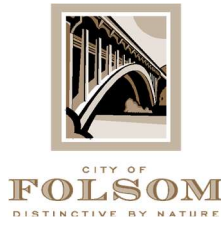
ENVIRONMENTAL AND WATER RESOURCES DEPT
50 NATOMA STREET
FOLSOM, CALIFORNIA 95630

PH: 916.461.6162
FAX: 916.351.8912

7645 Baldwin Dam Road, Folsom, CA 95630

Construction Notes:

1. Contractor shall give resident door hanger notification 14 days prior, 7 days prior, and 3 days prior, and knock-on door notification the day of for the following conditions:
 - a. Any water shut off affecting the property.
 - b. Any construction work occurring on the property.
2. Contractor shall take preconstruction photographs of all existing property condition in the area of Baldwin Dam Road, Mosswood Circle, and Valley Pines Drive.
3. Contractor shall protect existing softscape. Softscape includes but is not limited to grass, bark, trees, shrubs, etc. Contractor shall use protective measures to protect softscape from equipment damage. Any damage to existing softscape shall be repaired or replaced to pre-construction conditions or better.
4. Contractor shall protect all existing hardscape. Hardscape includes but is not limited to concrete, asphalt, AB, etc. Contractor shall use protective measures such as plywood and rubber tracks to protect hardscape from equipment damage. Any damage to existing hardscape shall be repaired or replaced to pre-construction conditions or better.
5. Contractor shall locate and protect existing irrigation and landscape lighting to the best of their ability. Any necessary modifications to existing systems as a result of the proposed project improvements will be identified and brought to the attention of the City and Engineer prior to construction.



Tree Management During Construction

1. The applicant shall retain the services of a project arborist for the duration of the project to monitor the health of trees to be preserved and ensure appropriate tree management actions take place in accordance with the most recent version of the International Society of Arboriculture's *Best Management Practices* - "Managing Trees During Construction" and the City of Folsom's Tree Care and Maintenance Standards. All construction activities conducted within the Critical Root Zone (CRZ) of trees shall be performed under the direct supervision of the project arborist.
2. Any necessary root severance shall be performed with sharp, sterile hand tools. Roots that have been ripped, torn, or crushed shall be traced by to undamaged tissue and cut cleanly, resulting in a flat surface with the adjacent bark firmly attached.
3. Roots exposed from grade cuts or trenching shall not be allowed to dry out. If roots will be exposed overnight or if directed by the project arborist, the cut faces shall be moistened and covered until backfilled.
4. Any pruning for construction clearance shall be performed by or under the direct supervision of the project arborist.
5. The following actions are prohibited within the CRZ:
 - a. Parking of vehicles, equipment, or storage of material, unless otherwise approved by the City
 - b. Wounding or breaking tree trunks or branches through contact with vehicles or heavy equipment
 - c. Contamination of soil by washing out equipment or conducting vehicle maintenance.
6. A certification letter by the project arborist attesting compliance with these requirements shall be submitted to the City upon project completion.

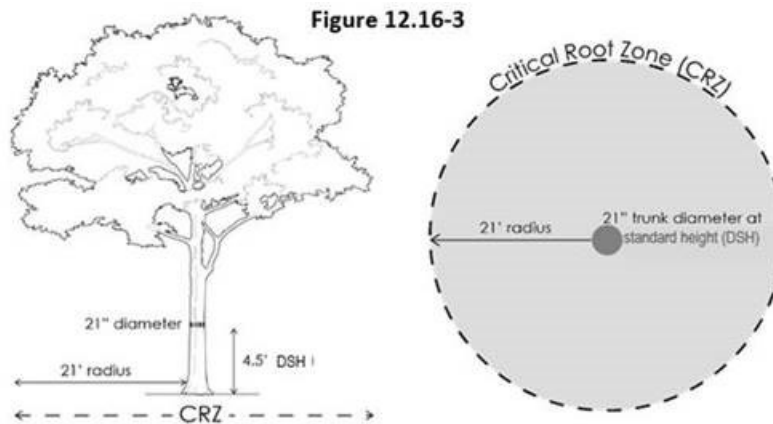


CITY OF
FOLSOM
DISTINCTIVE BY NATURE

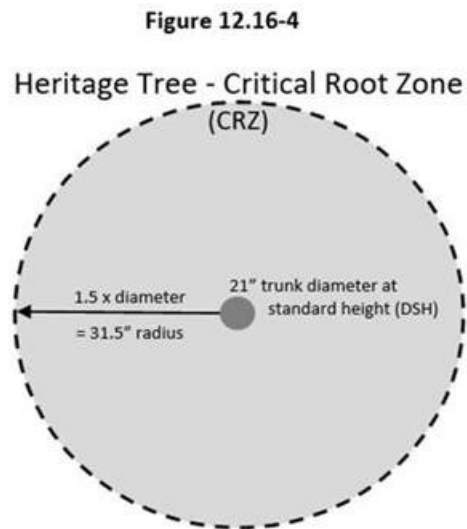
ENVIRONMENTAL AND WATER RESOURCES DEPT
50 NATOMA STREET
FOLSOM, CALIFORNIA 95630

PH: 916.461.6162
FAX: 916.351.8912

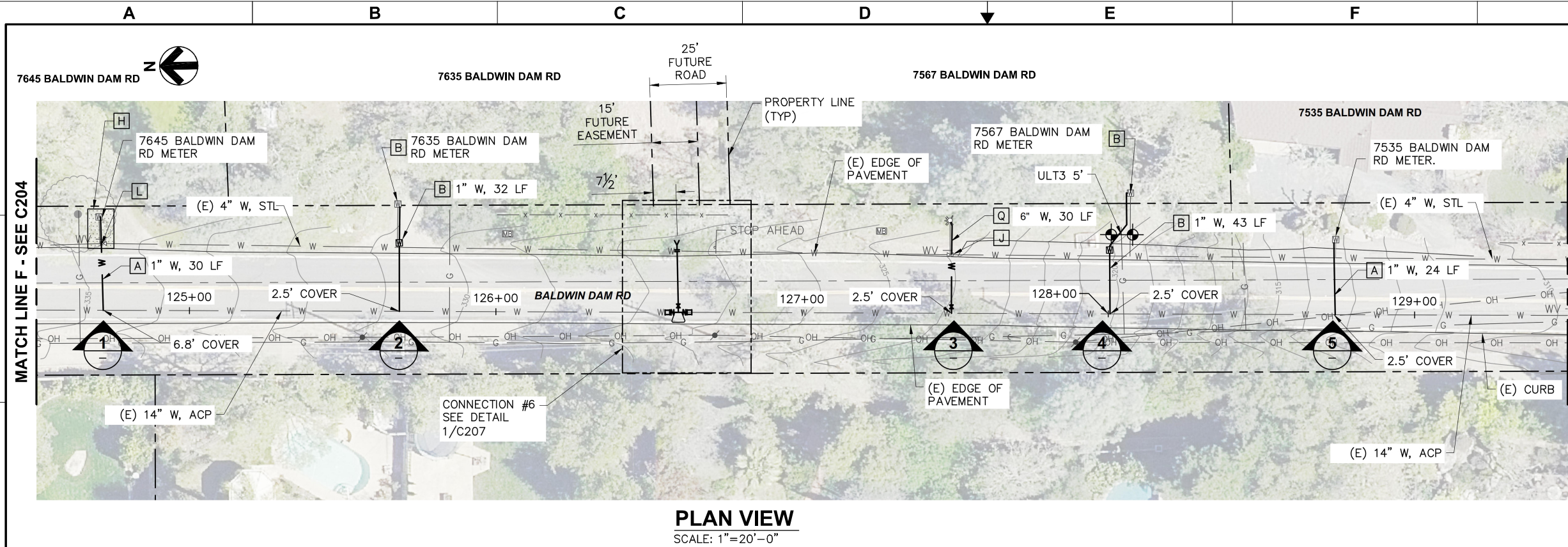
“Critical root zone (CRZ)” means the area of soil extending from the tree trunk where roots required for future tree health and survival are located. This critical root zone area for all trees except heritage trees is a circle with a minimum radius of one foot for every one inch in trunk diameter at DSH. Refer to Figure 12.16-3.



For heritage trees, the critical root zone area shall be a circle with a minimum radius of one and one-half feet for every one inch in trunk diameter at DSH, unless reduced by the city arborist. Refer to Figure 12.16-4.

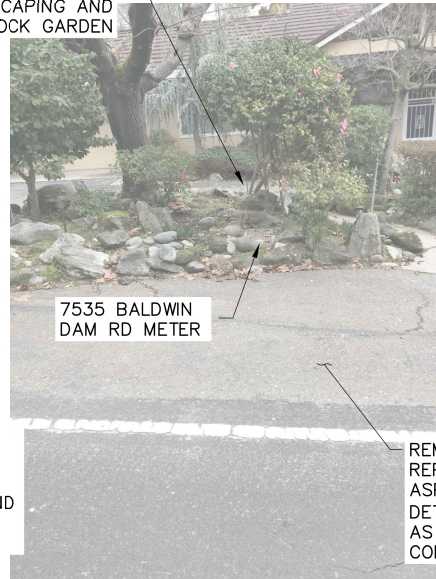
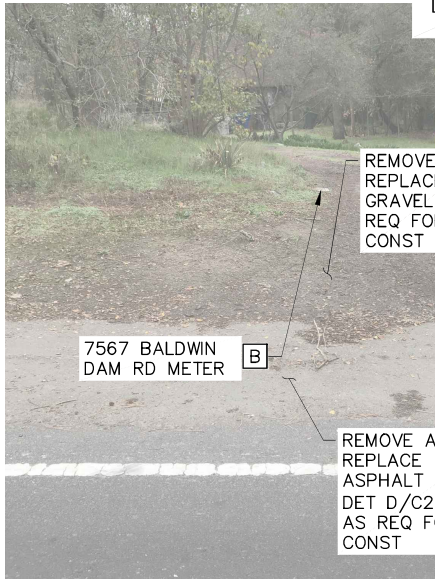
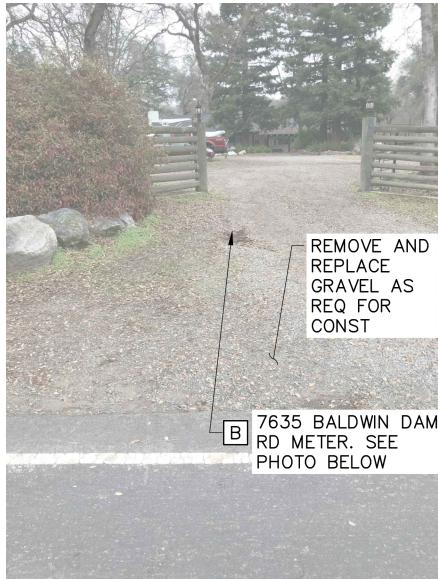


File Name: S:\common\projects\361-City of Folsom\006-Ashland II Project\04-Design\Drawings\03-Civil\361-006-C205 to C205 Pipeline.dwg
Plot Date: 6/18/2021 9:39 AM
Plotted By: ANTHONY PEREZ



- NOTES**
1. POTHOLE TO VERIFY LOCATION, SIZE AND MATERIAL OF EXISTING WATER MAIN PRIOR TO ORDERING PIPING AND CONNECTION FITTINGS.
 2. WATER SERVICE LATERAL IMPROVEMENTS NOT REQ'D FOR THIS ADDRESS.
 3. FOR WORK WITHIN THE ROADWAY BACKFILL AND RESTORE ASPHALT ROAD SECTION USING T-CUT AND GRIND ON ALL SIDES OF THE EXCAVATION PER DET D/253.
 4. FOR WORK OUTSIDE OF THE ROADWAY BACKFILL PER DET A/C253 AND RESTORE ALL EXISTING SURFACE CONDITIONS AS SHOWN IN PHOTO REFERENCE, SPECIFICATIONS AND SIGNED RIGHT OF ENTRY AGREEMENTS.
 5. SEE SEQUENCE OF OPERATION NOTES ON DWG G005 FOR OPERATION DURING THE DECOMMISSIONING PROCESS. CONTRACTOR TO NOTE THAT EXISTING MAIN MUST REMAIN IN SERVICE DURING THIS TIME AND THAT DECOMMISSIONING OF EXISTING MAIN CANNOT COMMENCE WITHOUT WRITTEN CITY APPROVAL.
 6. REMOVE (E) WATER MAIN AS REQ'D TO INSTALL NEW MAIN TIE-INS.

- CONSTRUCTION NOTES**
- [A] CONSTRUCT NEW WATER SERVICE LATERAL AND CONNECT TO EXISTING EXISTING WATER SERVICE AT UPSTREAM END OF EXISTING METER PER DET C/C250. ALL ASSOCIATED METER APPURTENANCES UPSTREAM OF METER SHALL BE REPLACED.
- [B] CONSTRUCT NEW WATER SERVICE LATERAL WITH NEW METER BOX PER DET A/C250. REMOVE EXISTING METER BOX, METER, ANGLE METER STOP AND ALL OTHER ASSOCIATED METER APPURTENANCES AND CONNECT TO EXISTING WATER SERVICE PIPING.
- [H] ALL EXCAVATION WORK IDENTIFIED WITHIN THE SHADED AREA, WHETHER INSIDE OR OUTSIDE OF THE CRITICAL ROOT ZONE, MUST BE ACCOMPLISHED BY USE OF HAND DIGGING TO PRESERVE AND PROTECT EXISTING TREE ROOTS. SEE SPECIFICATION SECTION 01140 FOR ADDITIONAL INFORMATION.
- [J] REMOVE (E) WATER VALVE, ASSOCIATED VALVE BOX AND APPURTENANCES DOWN TO 2.5' BELOW GRADE.
- [L] ABANDON EXISTING VALVE AND REMOVE VALVE BOX RISER AND APPURTENANCES DOWN TO 2.5' BELOW GRADE.
- [Q] CONSTRUCT NEW HYDRANT SERVICE LATERAL PER DET A/C252



HydroScience 10569 OLD PLACERVILLE ROAD SACRAMENTO, CA 95827 OFFICE: 916.364.1490		PAPER SIZE: 22X34 (ANSI D) 0" 12" 1" THIS BAR IS 1 INCH AT FULL SCALE. IF NOT, SCALE ACCORDINGLY.		JOB NO. 361-006 DATE 06/18/2021 DRAWN BY AGP/BF DESIGNED BY BF PROJ. MGR. ELJ		<table border="1"><thead><tr><th>REV</th><th>DESCRIPTION</th><th>DATE</th><th>APVD</th></tr></thead><tbody><tr><td> </td><td> </td><td> </td><td> </td></tr><tr><td> </td><td> </td><td> </td><td> </td></tr><tr><td> </td><td> </td><td> </td><td> </td></tr></tbody></table>		REV	DESCRIPTION	DATE	APVD													 CITY OF FOLSOM ENVIRONMENTAL AND WATER RESOURCES		ASHLAND WATER REHABILITATION PROJECT II		PLAN & PHOTOS - BALDWIN DAM ROAD - STA 124+50 TO 129+50		90% SUBMITTAL JUNE 2021		C205 DRAWING NUMBER SHEET 11 OF 27	
REV	DESCRIPTION	DATE	APVD																														