

City of Folsom

Active Transportation Plan (ATP)

City Council | June 14, 2022



CITY OF
FOLSOM
DISTINCTIVE BY NATURE

alta



CITY OF
FOLSOM
DISTINCTIVE BY NATURE

alta

More than 2,500 comments received through the interactive comment map and public input events

Folsom residents confirmed the importance of a well-connected, low-stress active transportation network.



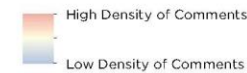


- **Safety** is a primary concern, specifically high vehicle speeds
- **Crossings** – Need for both more crossings and improved safety
- **Complete sidewalks** to improve connections to destinations
- Trails are a significant asset, but **connections to trails** need improvement
- **More protection** for on-street bikeways

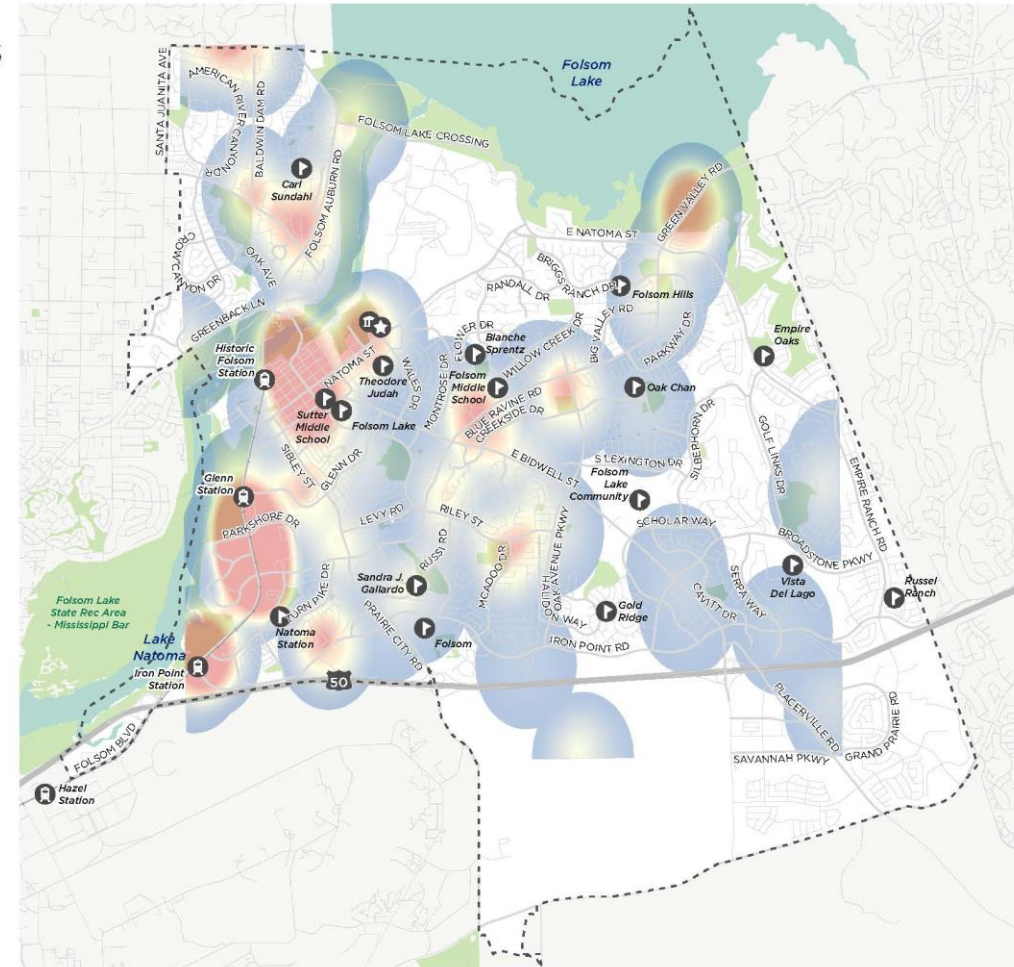
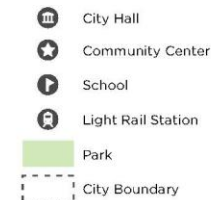
WALKING AND BIKING BARRIERS

FOLSOM ATP

Public Input Web Map Results



Destinations + Boundaries





Recommendations

-
- *Bikeway improvements*
 - *Pedestrian Improvements*
 - *Spot Improvements*



DRAFT ATP PUBLIC HEARING TIMELINE

Traffic Safety Committee:

- March 24, 2022
- April 28, 2022

Parks & Recreation Commission:

- April 5, 2022

Planning Commission:

- April 6, 2022

City Council:

- April 12, 2022



Active Transportation Plan

Folsom, California | Spring 2022



Where Do We Start?



CITY OF
FOLSOM
DISTINCTIVE BY NATURE



Funding Source	Planning/ Design/ Construction	On-Street Bikeways & Sidewalks	Paths	Safe Routes to School	Safe Routes to Transit	Crossings/ Intersections	Programs	Studies
----------------	--------------------------------------	--------------------------------------	-------	-----------------------------	------------------------------	-----------------------------	----------	---------

Local and Regional Programs

Measure A (STA)	P/D/C	•	•	•	•	•	•	•
SACOG Regional Program (SACOG)	D/C	•	•	•	•	•	•	•
SACOG Active Transportation Program	P/D/C	•	•	•	•	•	•	•
Sustainable Transportation Equity Project (CARB)	P/D/C	•	•	•	•	•		
Transportation Development Act Article 3 (SACOG)	D/C	•	•	•	•	•		
New Developments/Resurfacing Projects (Sacramento County)	D/C	•	•					
Assessment District (Sacramento County)	P/D/C	•	•	•	•			
Impact Fees (Sacramento County)	P/D/C	•	•	•	•			
SACOG Community Design Funding Program	D/C	•	•	•	•			
SACOG Transportation Demand Management (TDM) Program	P/D/C	•	•		•			
SACOG Innovative Mobility Program	P/D/C	•	•	•	•			

Statewide and Federal Grants

Active Transportation Program (CTC)	P/D/C	•	•	•	•			
Sustainable Transportation Planning Grants (Caltrans)	P							
Highway Safety Improvement Program (Caltrans)	D/C	•		•	•			

Funding Source	Planning/ Design/ Construction	On-Street Bikeways & Sidewalks	Paths	Safe Routes to School	Safe Routes to Transit	Crossings/ Intersections	Programs	Studies
----------------	--------------------------------------	--------------------------------------	-------	-----------------------------	------------------------------	-----------------------------	----------	---------

Solutions for Congested Corridors (CTC)	C	•	•			•		
Safe Streets And Roads for All (SS4A) Program	P/D/C	•	•	•	•	•	•	•
Office of Traffic Safety (CA OTS)	-						•	
Recreational Trails Program (CA DPR)	C		•					
Affordable Housing & Sustainable Communities (CA HCD)	C	•			•		•	
Urban Greening Grants (CA NRA)	C	•	•	•	•			
Statewide Park Program (CA DPR)	C		•					
Trade Corridor Enhancement Program (CTC)	C	•	•					
USHUD Community Development Block Grant Program	P/D/C	•	•	•	•	•	•	•
USHUD Community Development Block Grant Program	P/D/C	•	•	•	•	•	•	•
Local Partnership Program (CTC)	C	•		•	•	•		
Road Maintenance and Rehabilitation Program (Controller's Office)	D/C	•		•	•			

Other State Funds

Local Partnership Program (CTC)	C	•		•	•	•		
Road Maintenance and Rehabilitation Program (Controller's Office)	D/C	•		•	•			

Phase One Projects



Project Implementation Strategies

- **Explore opportunities for:**
 - Flexible Project Delivery
 - Quick Build
 - Cross-Department Coordination

- **Funding Approaches:**
 - Integration on CIP lists
 - Grant Opportunities
 - Development Coordination + Phasing

Figure 23 Phase One Projects

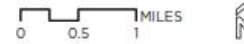
Phase One Projects FOLSOM ATP

Phase One Projects

- Spot Improvement
- Proposed Bikeway
- Pedestrian Improvement

Destinations + Boundaries

- City Hall
- Community Center
- School
- Light Rail Station
- City Boundary
- Park



Data provided by the City of Folsom, SACOG.





CITY OF
FOLSOM
DISTINCTIVE BY NATURE

alta

City of Folsom

Active

Transportation

Plan



Active Transportation Plan

Folsom, California | Spring 2022



CITY OF
FOLSOM
DISTINCTIVE BY NATURE

Thank you!



alta

Figure 4 Existing Sidewalks and Pedestrian Barriers

Pedestrian Barriers

FOLSOM ATP







Existing Pedestrian Barriers

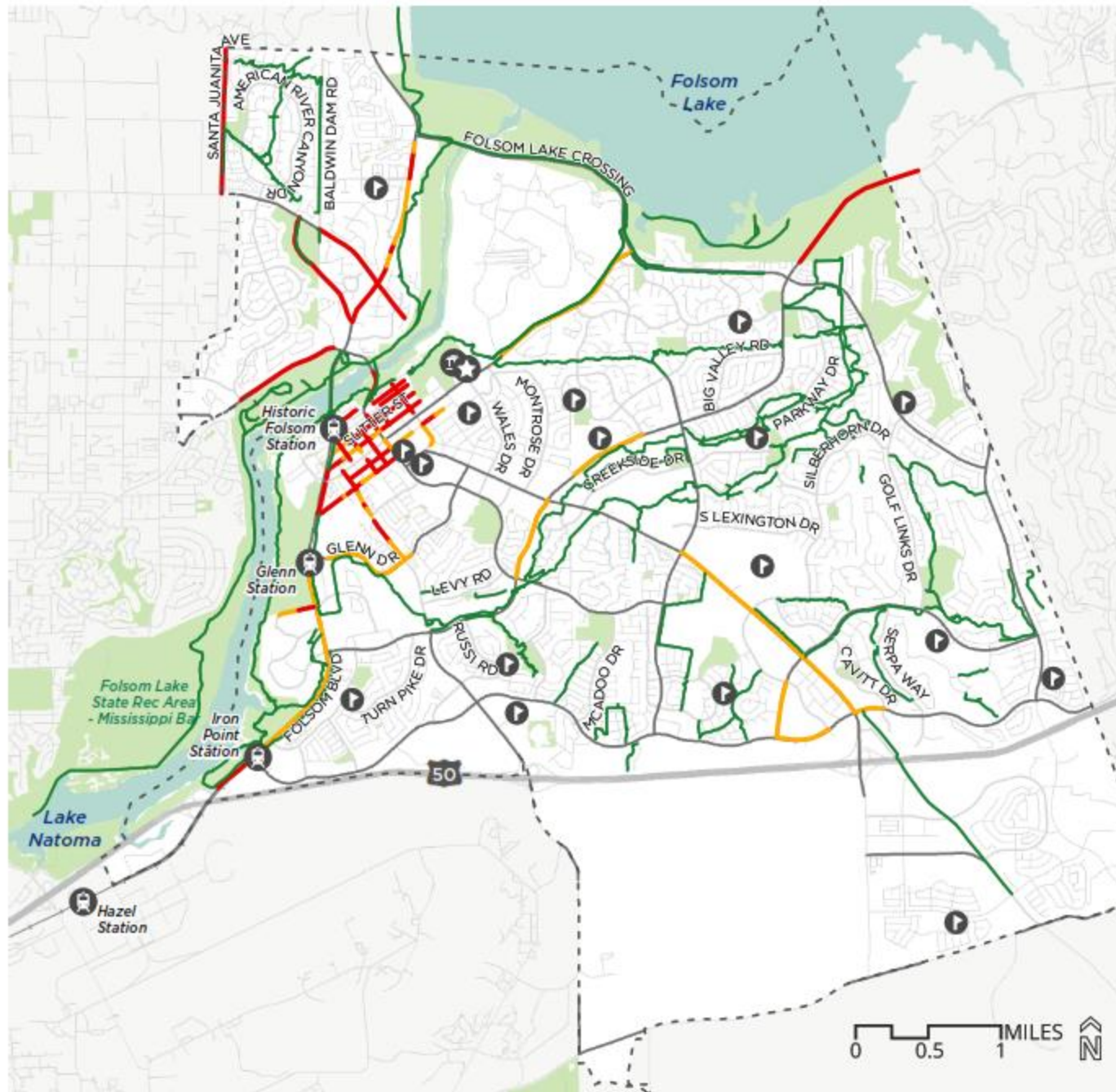
- Sidewalk Missing (Both sides)
- Sidewalk Missing (One side)
- Arterial Roadway

Existing Pedestrian Network

- Path (paved)
- Full Sidewalk

Destinations + Boundaries

-  City Hall
-  Community Center
-  School
-  Light Rail Station
-  City Boundary
-  Park



CITY OF
FOLSOM
DISTINCTIVE BY NATURE





Figure 16 High Priority Sidewalks

High Priority Walking Network Improvements

FOLSOM ATP


Pedestrian Improvements

-  Fill in Sidewalk Gaps (Both Sides)
-  Fill in Sidewalk Gaps (One-side)

Proposed Shared use paths

-  Class I Shared Use Path

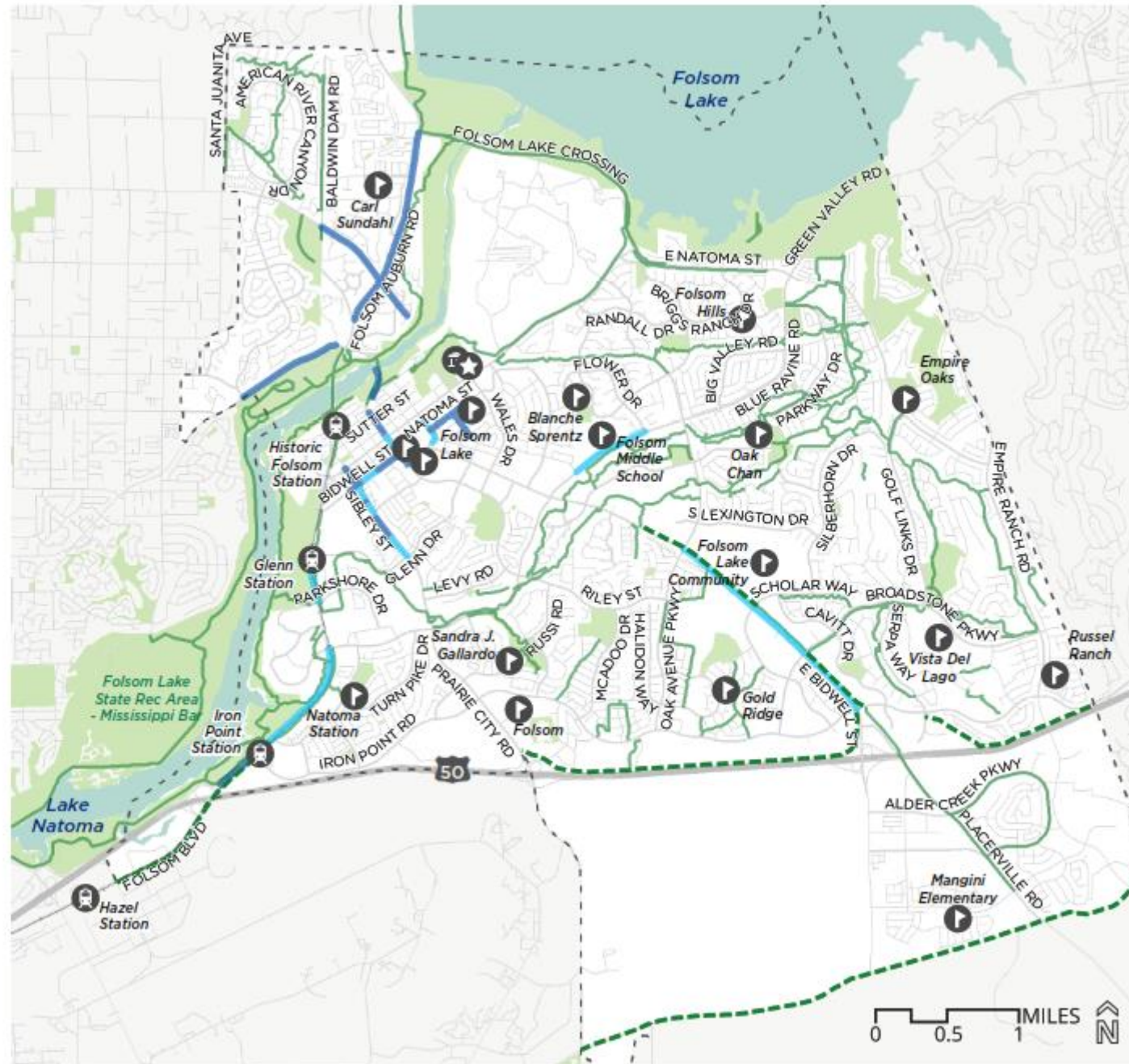
Existing Bikeways

-  Class I Paved Shared Use Path

Destinations + Boundaries

-  City Hall
-  Community Center
-  School
-  Light Rail Station
-  City Boundary
-  Park

Data provided by the City of Folsom, SACOG



CITY OF
FOLSOM
DISTINCTIVE BY NATURE





Figure 17 Medium Priority Sidewalks

Medium Priority Walking Network Improvements

FOLSOM ATP


Pedestrian Improvements

-  Fill in Sidewalk Gaps (Both Sides)
-  Fill in Sidewalk Gaps (One-side)

Proposed Shared use paths

-  Class I Shared Use Path

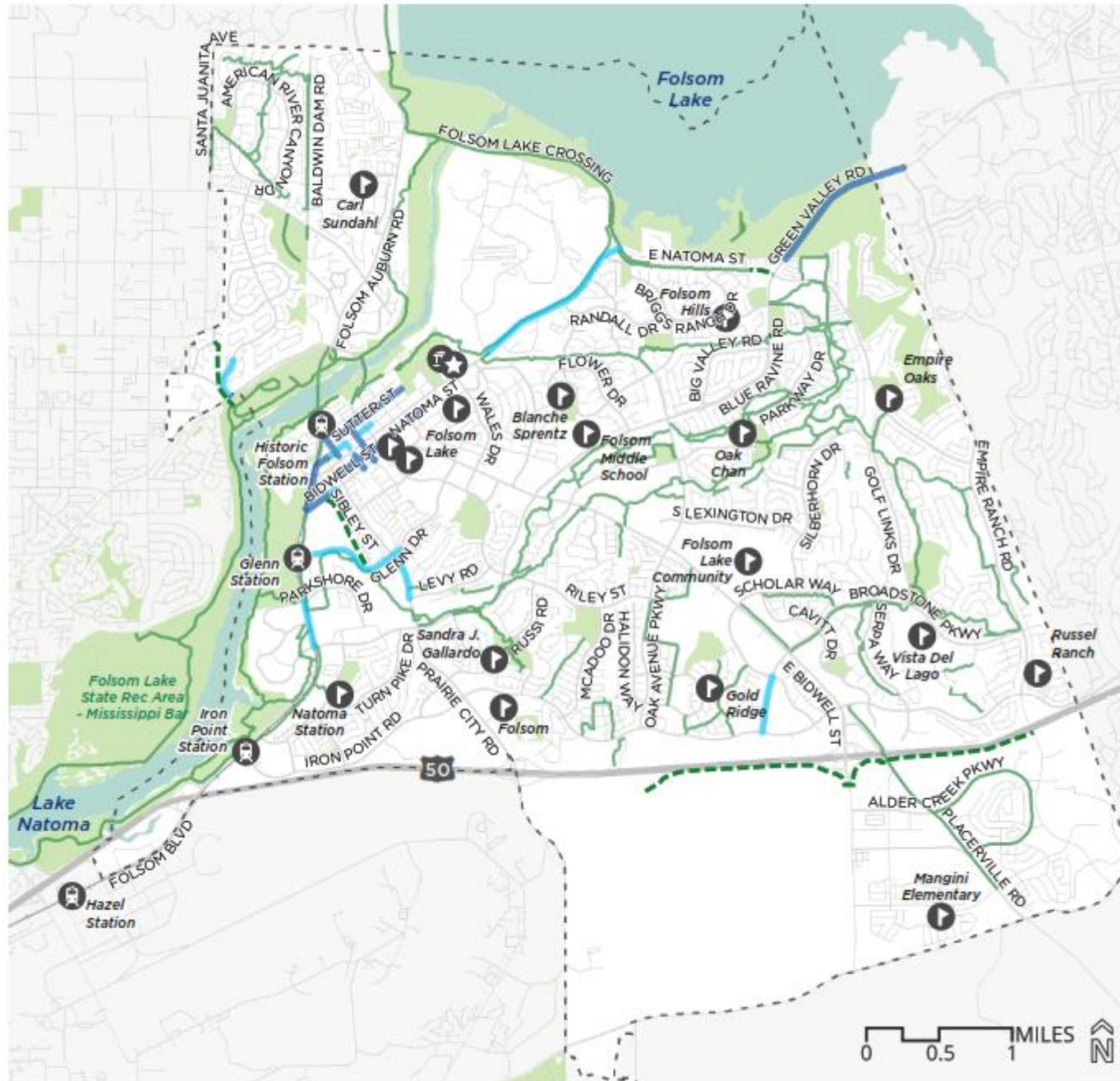
Existing Bikeways

-  Class I Paved Shared Use Path

Destinations + Boundaries

-  City Hall
-  Community Center
-  School
-  Light Rail Station
-  City Boundary
-  Park

Data provided by the City of Folsom, SACOG



CITY OF
FOLSOM
DISTINCTIVE BY NATURE



Figure 18 Low Priority Sidewalks

Low Priority Walking Network Improvements

FOLSOM ATP

Pedestrian Improvements

- Fill in Sidewalk Gaps (Both Sides)
- Fill in Sidewalk Gaps (One-side)

Proposed Shared use paths

- Class I Shared Use Path

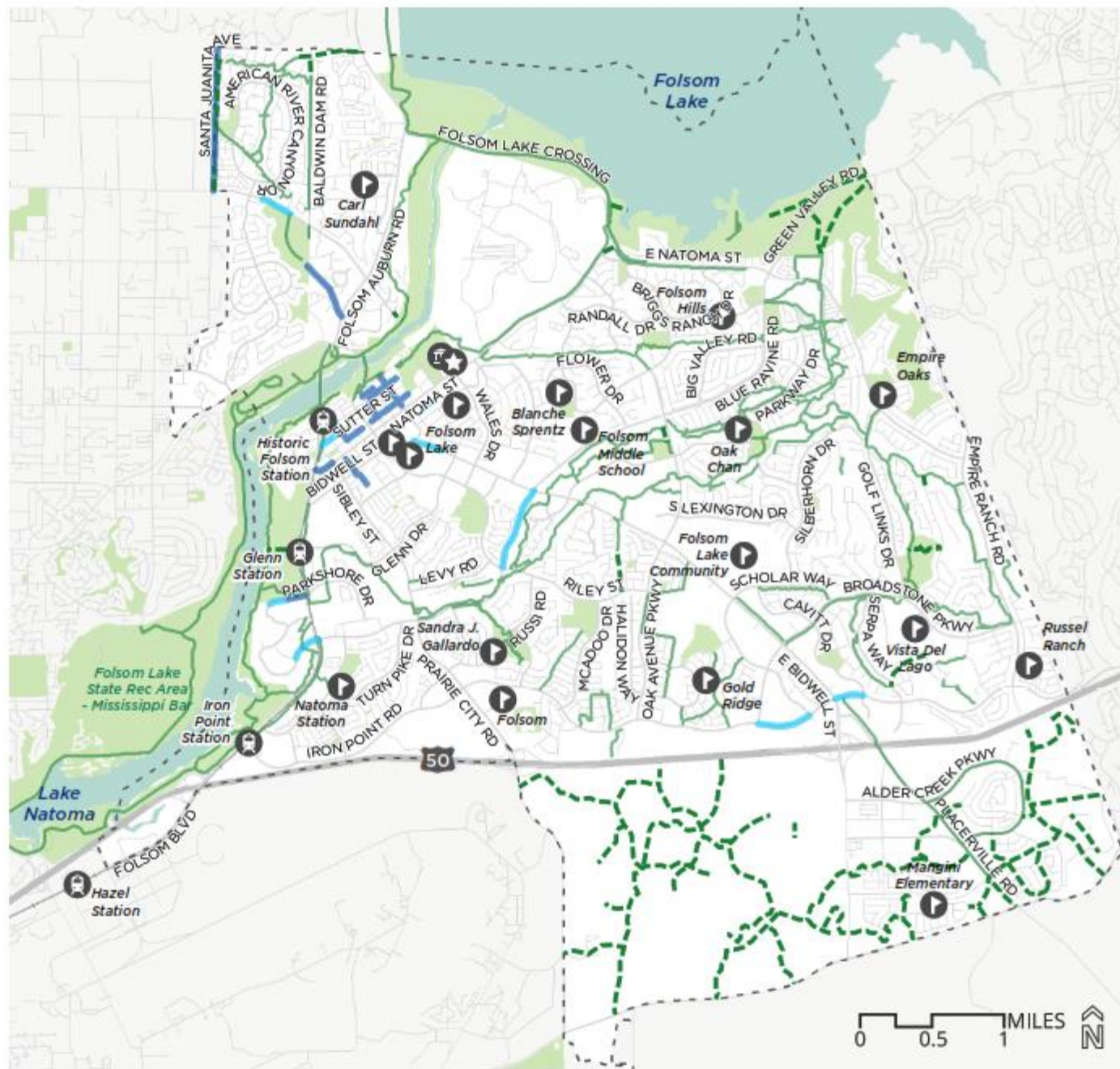
Existing Bikeways

- Class I Paved Shared Use Path

Destinations + Boundaries

- City Hall
- Community Center
- School
- Light Rail Station
- City Boundary
- Park

Data provided by the City of Folsom, SACOG



CITY OF
FOLSOM
DISTINCTIVE BY NATURE



Table 11 *Priority Pedestrian Network Projects*



Project Name	Side of Street	Length (Miles)	Priority Category	Planning Level Cost Estimate	
				Sidewalk (6 ft)	Sidewalk (10 ft)
Greenback Ln from Historic Truss Bridge to Scott St	Both	0.19	High	\$286,615	\$348,030
Greenback Ln from American River Canyon Dr to Folsom-Auburn Rd	Both	0.72	High	\$1,068,570	\$1,297,545
Riley St from Sutter St to E Bidwell St	Both	0.44	High	\$646,235	\$784,715
Riley St from Natoma St to Persifer St	One	0.07	High	\$51,160	\$62,125
Folsom Blvd from West of Iron Point Station to Blue Ravine Rd	One	0.82	High	\$604,300	\$733,795
Folsom Blvd from Highway 50 to West of Iron Point Station	Both	0.42	High	\$620,450	\$753,405
Folsom Blvd from Parkshore Dr to Glenn Dr	One	0.33	High	\$245,135	\$297,665
Blue Ravine Rd from School St to Flower Dr	One	0.54	High	\$401,015	\$486,945
Bidwell St from Orange Grove Way to Kelly Way	Both	0.13	High	\$187,585	\$227,780
Bidwell St from Kelly Way to Decatur St	One	0.12	High	\$85,720	\$104,090
Bidwell St from Decatur St to West of Riley St	Both	0.15	High	\$222,985	\$270,765
E Bidwell St from Oak Ave Pkwy to Iron Point Rd	One	1.60	High	\$1,185,075	\$1,439,020
Sibley St from Natoma St to North of Kelly Way	Both	0.18	High	\$263,660	\$320,160
Sibley St from North of Kelly Way to South of Martin Ct	One	0.09	High	\$65,830	\$79,935
Sibley St from South of Martin Ct to North of Holley Ct	Both	0.03	High	\$47,815	\$58,065
Sibley St from North of Holley Ct to Lembi Dr	One	0.06	High	\$40,760	\$49,495
Sibley St from South of Lembi Dr to Brilliance Pl	Both	0.17	High	\$256,460	\$311,415
Sibley St from Brilliance Pl to Glenn Dr	One	0.16	High	\$117,850	\$143,105
Coloma St from Persifer St to Duchow Way - E Bidwell St Alley	One	0.17	High	\$124,050	\$150,635
Oak Avenue Pkwy from Baldwin Dam Rd to Grant Ln	Both	0.85	High	\$1,251,805	\$1,520,045
Dean Way from Coloma St to Stafford St	Both	0.26	High	\$390,630	\$474,340
Folsom-Auburn Rd from Oak Ave to Folsom Lake Crossing	Both	1.36	High	2014545	\$2,446,235
School St from Dean Way to Market St	Both	0.19	High	274325	\$333,110



Table 11 *Priority Pedestrian Network Projects, continued*

Project Name	Side of Street	Length (Miles)	Priority Category	Planning Level Cost Estimate	
				Sidewalk (6 ft)	Sidewalk (10 ft)
E Natoma St from Prison Rd to Folsom Lake Crossing	One	1.16	Medium	\$860,295	\$1,044,645
Folsom Blvd from Blue Ravine Rd to Parkshore Dr	One	0.32	Medium	\$238,110	\$289,130
Green Valley Rd from Cummings Way to Sophia Pkwy	Both	1.06	Medium	\$1,561,140	\$1,895,670
Glenn Dr from 330' east of Coolidge Dr to 950' west of Sibley St	One	0.67	Medium	\$496,570	\$602,975
Bidwell St from Folsom Blvd to West of Orange Grove Way	Both	0.22	Medium	\$320,585	\$389,280
Bidwell St from West of Orange Grove Way to Orange Grove Way	One	0.03	Medium	\$21,610	\$26,240
Broadstone Pkwy from Iron Point Rd to Clarksville Rd	One	0.38	Medium	\$283,500	\$344,250
Leidesdorff St from Folsom Blvd to Gold Lake Dr	Both	0.20	Medium	\$291,505	\$353,970
Oakdale St from Bidwell St to South of Natoma St	Both	0.20	Medium	\$301,900	\$366,590
Oakdale St/Mormon St from Natoma St to Sibley St	Both	0.13	Medium	\$193,130	\$234,520
Mormon St from Sibley St to West of Reading St	Both	0.06	Medium	\$82,815	\$100,565
Mormon St from West of Reading St to Decatur St	One	0.12	Medium	\$89,250	\$108,375
Mormon St from East of Wool St to East of Riley St	One	0.09	Medium	\$65,295	\$79,290
Figueroa St from Decatur St to the East End	Both	0.52	Medium	\$775,540	\$941,730
Wool St from Figueroa St to Bidwell St	Both	0.28	Medium	\$409,230	\$496,925
Decatur St from Mormon St to Mormon Street Natoma St Alley	One	0.03	Medium	\$24,875	\$30,205
Decatur St from Natoma Street Persifer St Alley to Bidwell St	Both	0.10	Medium	\$153,900	\$186,875
Reading St from North End to Mormon Street Natoma St Alley	Both	0.17	Medium	\$253,605	\$307,950
Persifer St from Sibley St to Riley St	Both	0.35	Medium	\$524,080	\$636,385
Persifer St from Riley St to Bridge St	One	0.18	Medium	\$130,385	\$158,325
Persifer St from Coloma St to 300' East of Rumsey Way	Both	0.10	Medium	\$152,610	\$185,315
Sibley St from Glen Dr to Levy Rd	One	0.33	Medium	\$242,830	\$294,860
American River Canyon Rd from Greenback Ln to Morning Dove Ln	One	0.27	Medium	\$202,625	\$246,045



Table 11 Priority Pedestrian Network Projects, continued

Project Name	Side of Street	Length (Miles)	Priority Category	Planning Level Cost Estimate	
				Sidewalk (6 ft)	Sidewalk (10 ft)
Blue Ravine Rd from Riley St to E Bidwell St	One	0.58	Low	\$429,210	\$521,185
Iron Point Rd from Broadstone Pkwy to Palladio Pkwy	One	0.37	Low	\$271,710	\$320,160
Iron Point Rd from E Bidwell St to Cavitt Dr	One	0.19	Low	\$142,800	\$173,395
Canal St from Scott St to Bridge St	Both	0.26	Low	\$379,890	\$461,295
Sutter St from East of Scott St to West End	Both	0.23	Low	\$333,245	\$404,650
Mormon St from Decatur St to East of Wool St	Both	0.13	Low	\$185,150	\$224,825
Mormon St from East of Riley St to the East End	Both	0.31	Low	\$461,305	\$560,155
Figueroa St from West End to Decatur St	One	0.16	Low	\$118,985	\$144,480
Decatur St from Sutter St to Figueroa St	One	0.07	Low	\$52,035	\$63,185
Decatur St from Figueroa St to Mormon St	Both	0.07	Low	\$102,475	\$124,430
Reading St from Natoma Street Persifer St Alley to South End	Both	0.23	Low	\$336,640	\$408,775
Scott St from Peddlers Ln to Mormon St	Both	0.10	Low	\$153,885	\$186,860
Parkshore Dr from 1300' West of Folsom Blvd to ExtraSpaceStorage Entrance	One	0.14	Low	\$101,670	\$123,455
Parkshore Dr from ExtraSpaceStorage Entrance to Folsom Blvd	Both	0.10	Low	\$154,935	\$188,135
Coloma St from Leidesdorff St to Mormon Street Natoma St Alley	Both	0.24	Low	\$358,190	\$434,945
Persifer St from 300' East of Rumsey Way to Rumsey Way Stafford St Alley	One	0.07	Low	\$49,940	\$60,640
Santa Juanita Ave from Oak Avenue Pkwy to Northwest City Boundary	Both	1.00	Low	\$1,477,050	\$1,793,560
Oak Ave from Baldwin Dam Rd to Folsom Auburn Rd	Both	0.43	Low	\$632,180	\$767,645
Oak Avenue Pkwy from Katarina Ln to Lew Howard Park	One	0.22	Low	\$159,360	\$193,510
E Bidwell St from Coloma St to Market St	One	0.20	Low	\$145,255	\$176,380
Natoma St from Folsom Blvd to Sibley St	Both	0.13	Low	\$194,215	\$235,830
Blue Ravine Rd from Lake Forest Way to Folsom Blvd	One	0.21	Low	\$158,270	\$192,185