






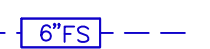




PRELIMINARY UTILITY PLAN

NATOMA SENIOR APARTMENTS

CITY OF FOLSOM, CA

| LEGEND | | |
|-------------------------------|---|---|
| DESCRIPTION | PROPOSED | EXISTING |
| WATER DOMESTIC |  |  |
| FIRE HYDRANT | | |
| WATER METER & BACKFLOW DEVICE | | |
| FIRE DEPT CONNECTION | | |
| SEWER LINE |  |  |
| SEWER MANHOLE | | |
| SEWER CLEANOUT | | |
| STORM DRAIN |  |  |
| STORM MANHOLE | | |
| DROP INLET | | |
| FIRE SERVICE LINE |  |  |
| FIRE WATER MAIN |  |  |
| ELECTRIC LINE | | |
| GAS LINE | | |
| TELEPHONE/CABLE | | |
| JOINT TRENCH | | |

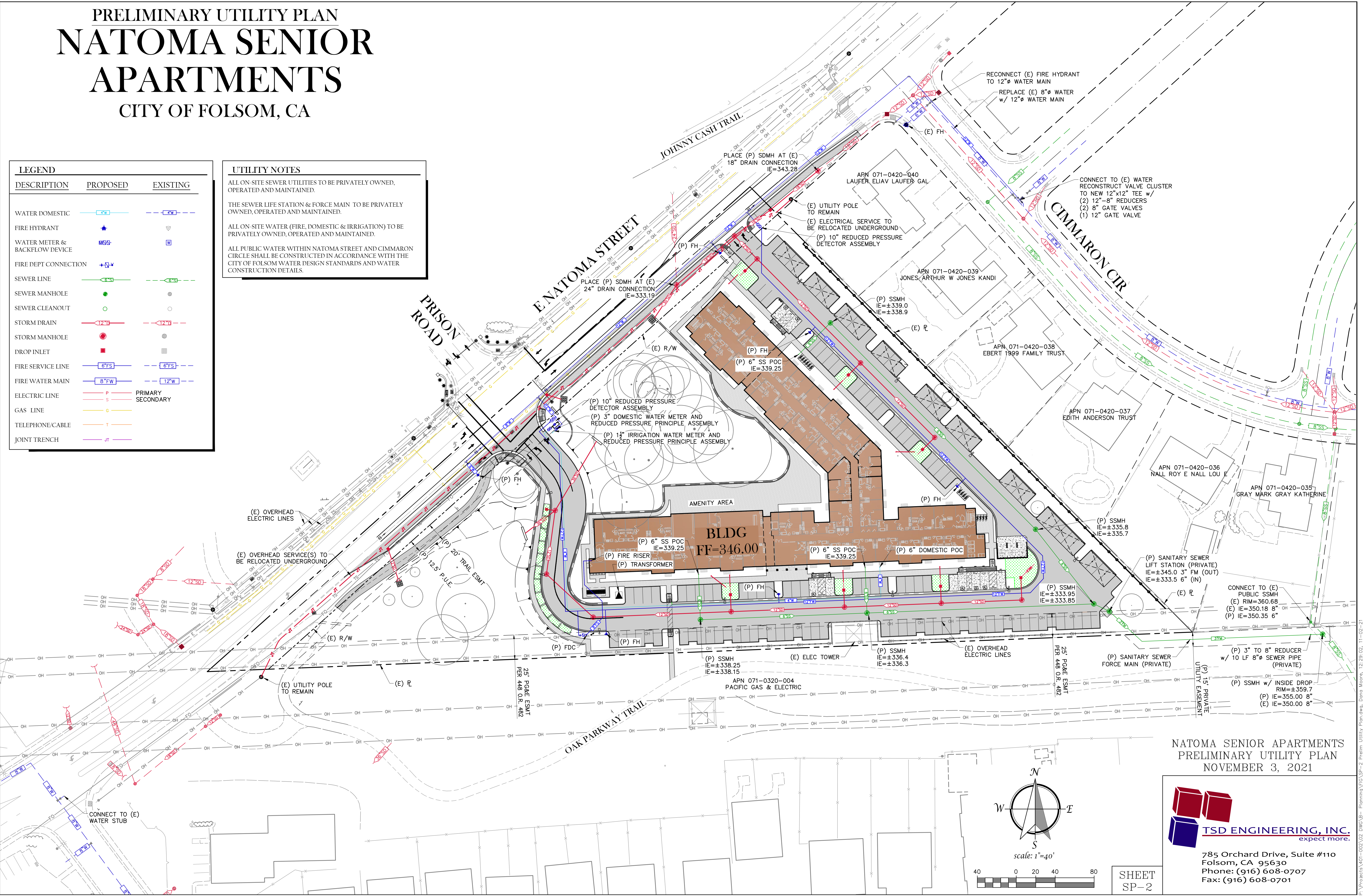
UTILITY NOTES

ALL ON-SITE SEWER UTILITIES TO BE PRIVATELY OWNED, OPERATED AND MAINTAINED.

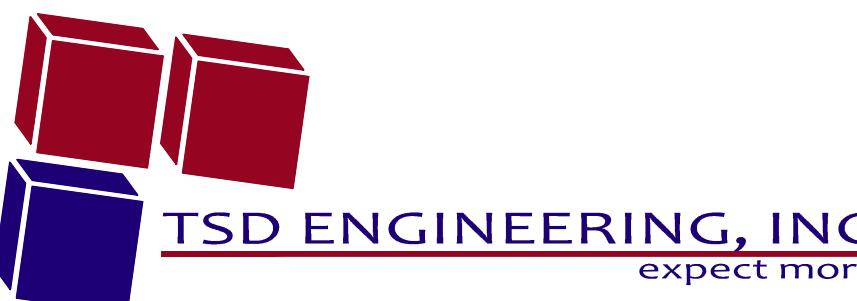
THE SEWER LIFE STATION & FORCE MAIN TO BE PRIVATELY OWNED, OPERATED AND MAINTAINED.

ALL ON-SITE WATER (FIRE, DOMESTIC & IRRIGATION) TO BE PRIVATELY OWNED, OPERATED AND MAINTAINED.

ALL PUBLIC WATER WITHIN NATOMA STREET AND CIMMARON CIRCLE SHALL BE CONSTRUCTED IN ACCORDANCE WITH THE CITY OF FOLSOM WATER DESIGN STANDARDS AND WATER CONSTRUCTION DETAILS.



NATOMA SENIOR APARTMENTS
PRELIMINARY UTILITY PLAN
NOVEMBER 3, 2021



785 Orchard Drive, Suite #110
Folsom, CA 95630
Phone: (916) 608-0707
Fax: (916) 608-0701

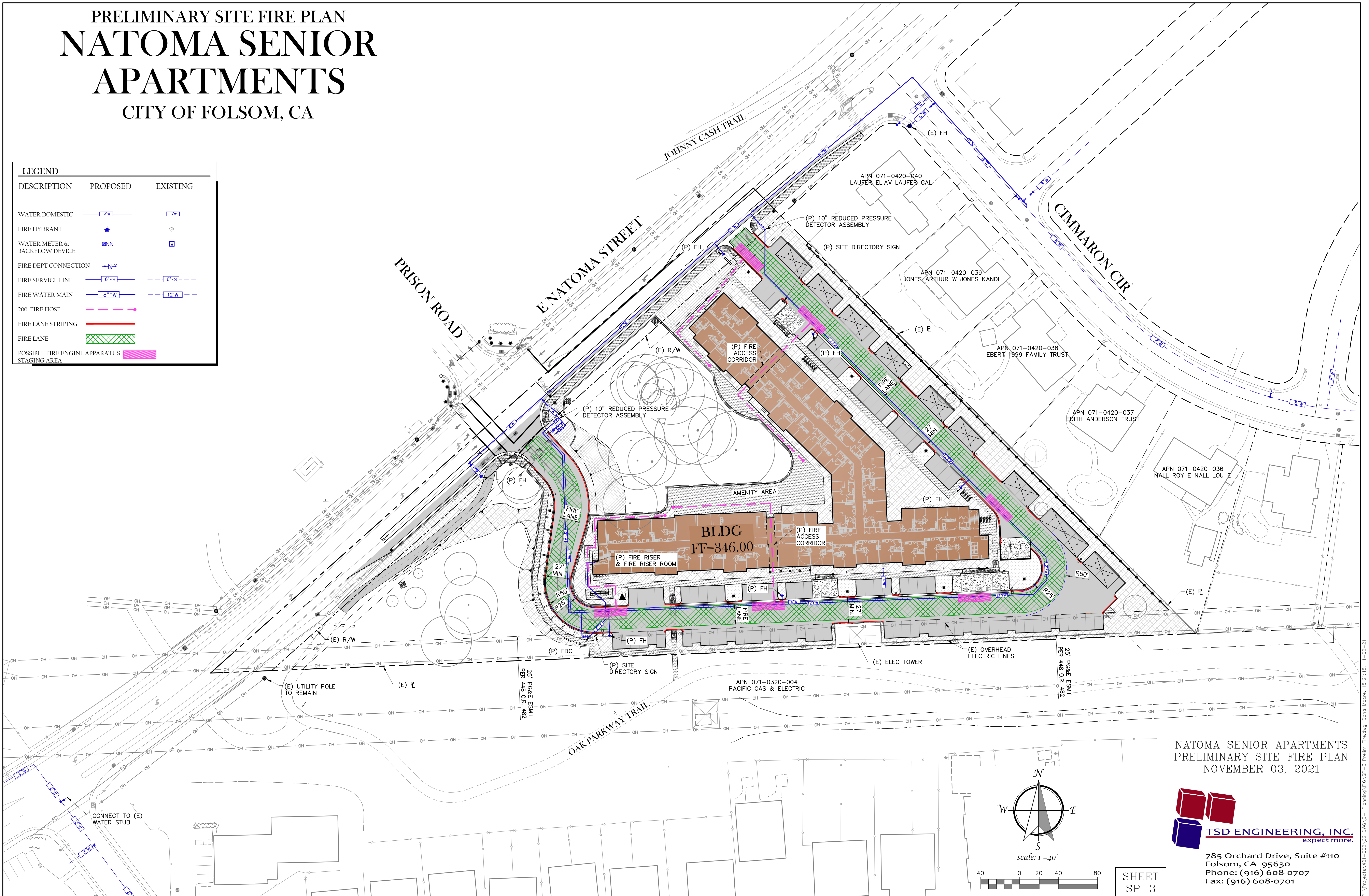
SHEET
SP-2

PRELIMINARY SITE FIRE PLAN

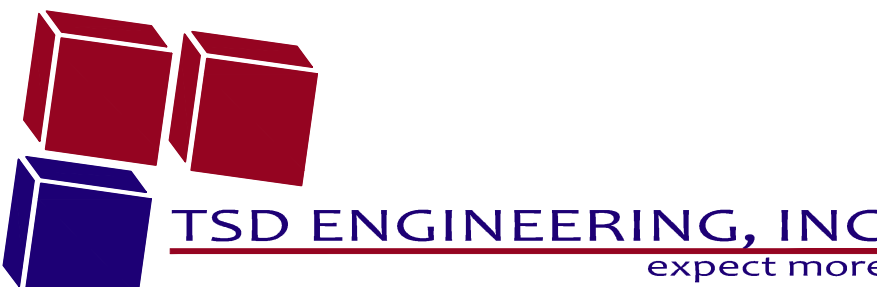
**NATOMA SENIOR
APARTMENTS**

CITY OF FOLSOM, CA

| LEGEND | | |
|---|-----------------|-----------------|
| <u>DESCRIPTION</u> | <u>PROPOSED</u> | <u>EXISTING</u> |
| WATER DOMESTIC | | |
| FIRE HYDRANT | | |
| WATER METER & BACKFLOW DEVICE | | |
| FIRE DEPT CONNECTION | | |
| FIRE SERVICE LINE | | |
| FIRE WATER MAIN | | |
| 200' FIRE HOSE | | |
| FIRE LANE STRIPING | | |
| FIRE LANE | | |
| POSSIBLE FIRE ENGINE APPARATUS STAGING AREA | | |



NATOMA SENIOR APARTMENTS
PRELIMINARY SITE FIRE PLAN
NOVEMBER 03, 2021



785 Orchard Drive, Suite #110
Folsom, CA 95630
Phone: (916) 608-0707
Fax: (916) 608-0701

PRELIMINARY GRADING PLAN

NATOMA SENIOR APARTMENTS

CITY OF FOLSOM, CA

STOMWATER REQUIREMENTS

| | | |
|--------------------------------|-------------|---------|
| EXISTING | | |
| PERVIOUS AREA (VACANT): | 4.823 ACRES | 99.92 % |
| IMPERVIOUS SURFACE (PAVEMENT): | 0.038 ACRES | 0.08 % |
| TOTAL AREA : | 4.861 ACRES | 100 % |

| | | |
|-----------------------------------|-------------|---------|
| PROPOSED | | |
| PERVIOUS AREA (LANDSCAPE): | 2.318 ACRES | 47.69% |
| PERVIOUS AREA (BIORETENTION): | 0.045 ACRES | 0.92 % |
| IMPERVIOUS SURFACE (PARKING LOT): | 1.289 ACRES | 26.52% |
| IMPERVIOUS SURFACE (HARDSCAPE): | 0.337 ACRES | 7.34% |
| IMPERVIOUS SURFACE (BUILDINGS): | 0.852 ACRES | 17.33 % |
| TOTAL AREA : | 4.861 ACRES | 100 % |

SWQ MANUAL (TABLE 3-2)
MULTI-FAMILY GREATER THAN 1 ACRE

SOURCE CONTROL MEASURES REQUIRED
MARK DI
WASTE MANAGEMENT AREA (T)
EFFICIENT IRRIGATION LANDSCAPING
FULL TRASH CAPTURE

LOW IMPACT DEVELOPMENT
REDUCE RUNOFF BY DISCONNECTING IMPERVIOUS SUREACES
WHERE POSSIBLE

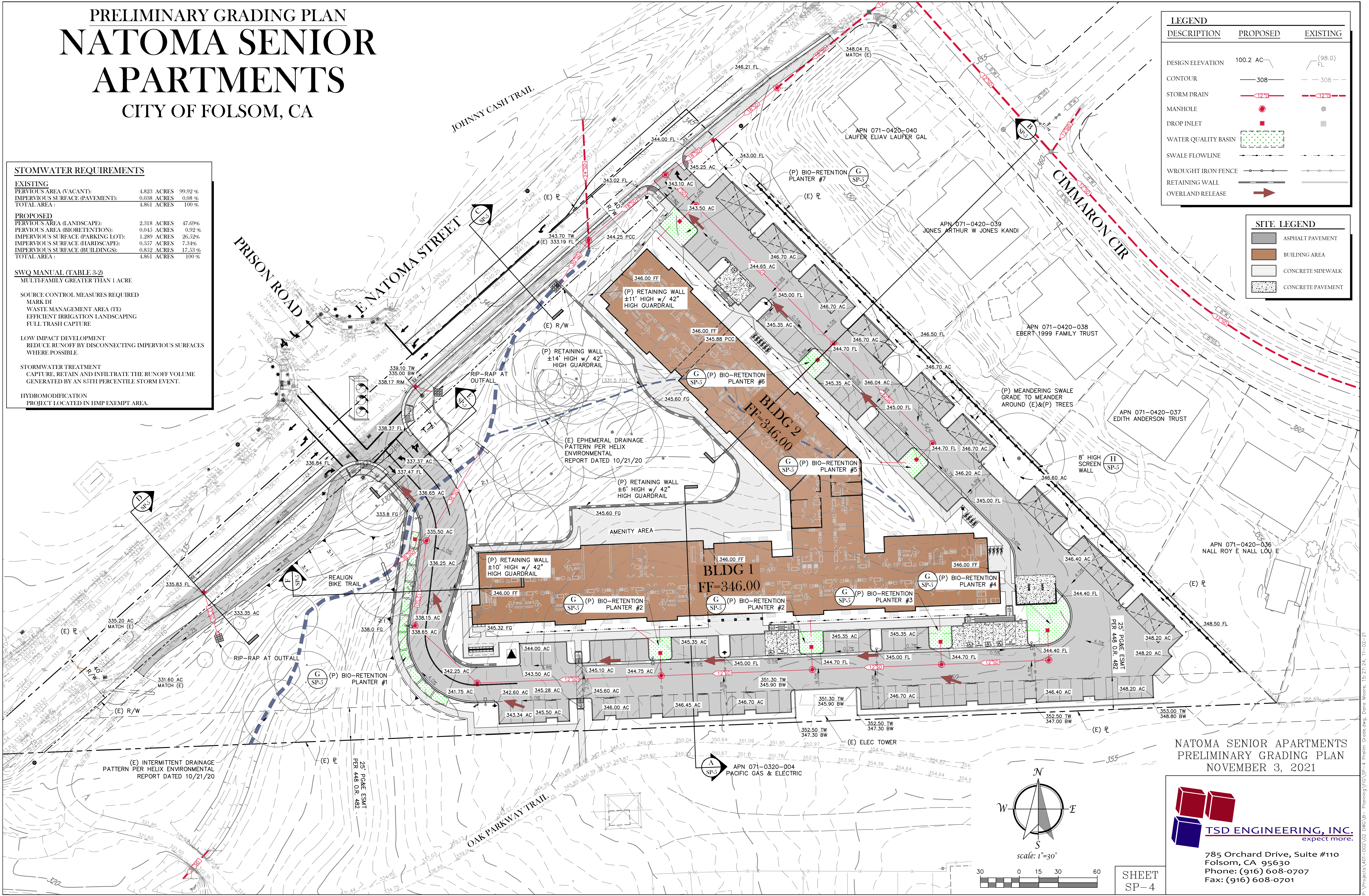
STORMWATER TREATMENT
CAPTURE, RETAIN AND INFILTRATE THE RUNOFF VOLUME
GENERATED BY AN 85TH PERCENTILE STORM EVENT.

HYDROMODIFICATION
PROJECT LOCATED IN HMP EXEMPT AREA.

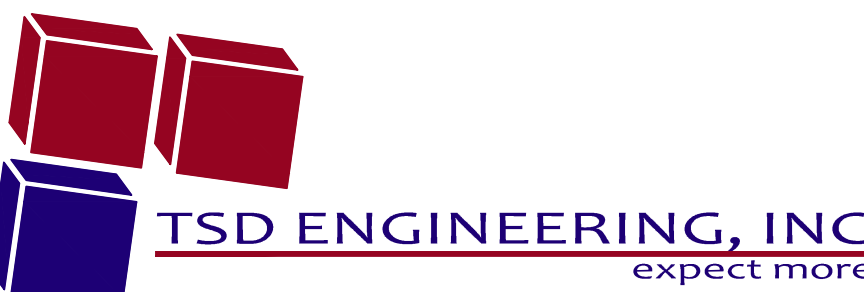
| LEGEND | PROPOSED | EXISTING |
|---------------------|-----------|-----------|
| DESIGN ELEVATION | 100.2 AC | (98.0) FL |
| CONTOUR | — 308 — | — 308 — |
| STORM DRAIN | — 12" S — | — 12" S — |
| MANHOLE | ● | ● |
| DROP INLET | ■ | ■ |
| WATER QUALITY BASIN | ■ | ■ |
| SWALE FLOWLINE | → | → |
| WROUGHT IRON FENCE | — | — |
| RETAINING WALL | — | — |
| OVERLAND RELEASE | → | → |

SITE LEGEND

| | |
|-------------------|---|
| ASPHALT PAVEMENT | ■ |
| BUILDING AREA | ■ |
| CONCRETE SIDEWALK | ■ |
| CONCRETE PAVEMENT | ■ |



NATOMA SENIOR APARTMENTS
PRELIMINARY GRADING PLAN
NOVEMBER 3, 2021



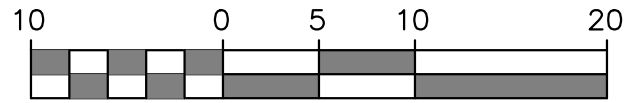
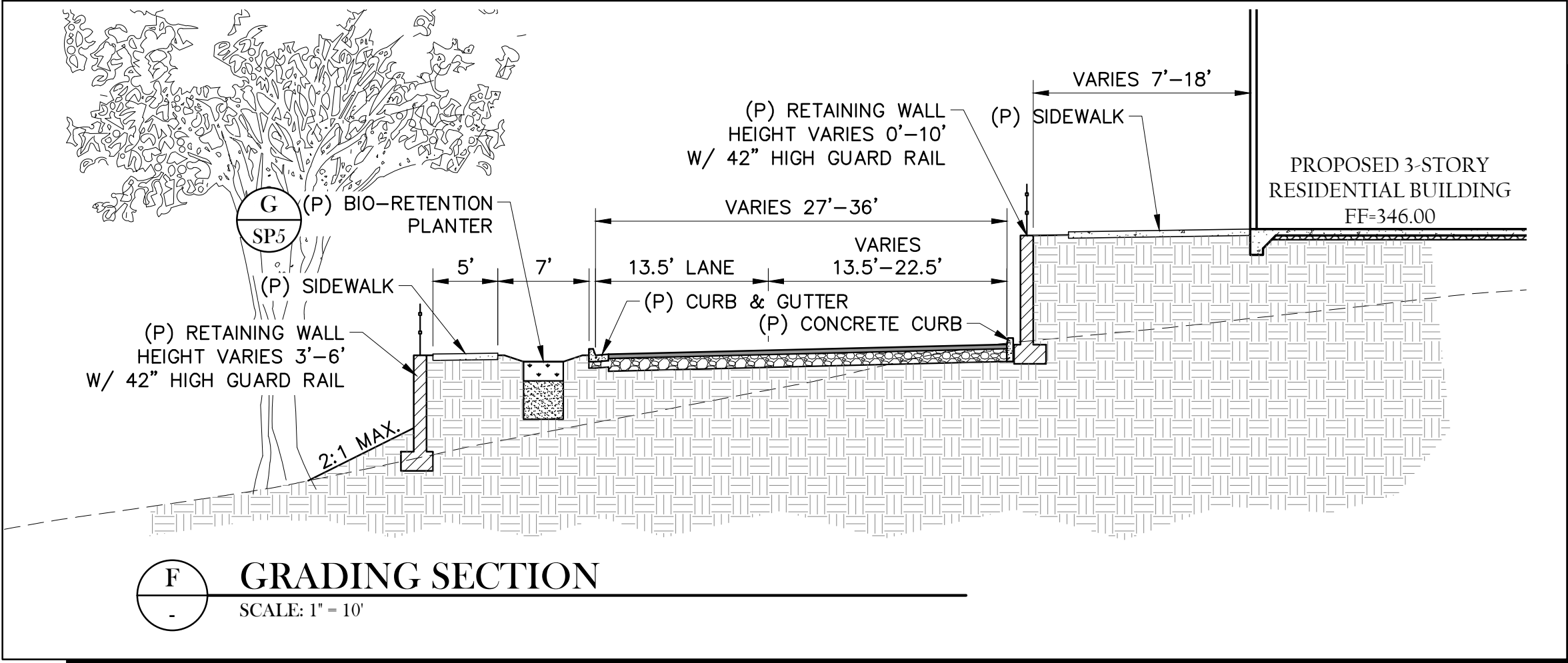
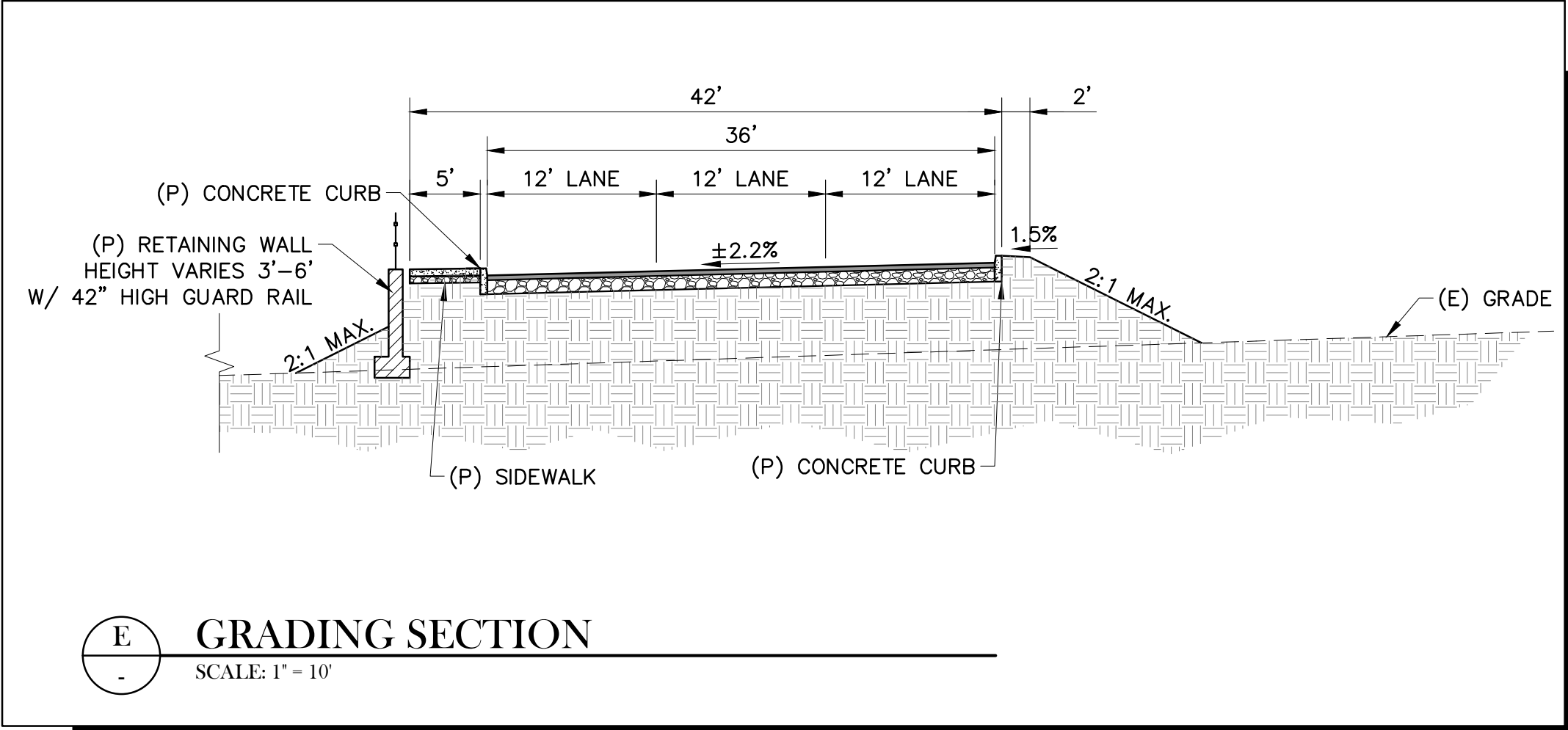
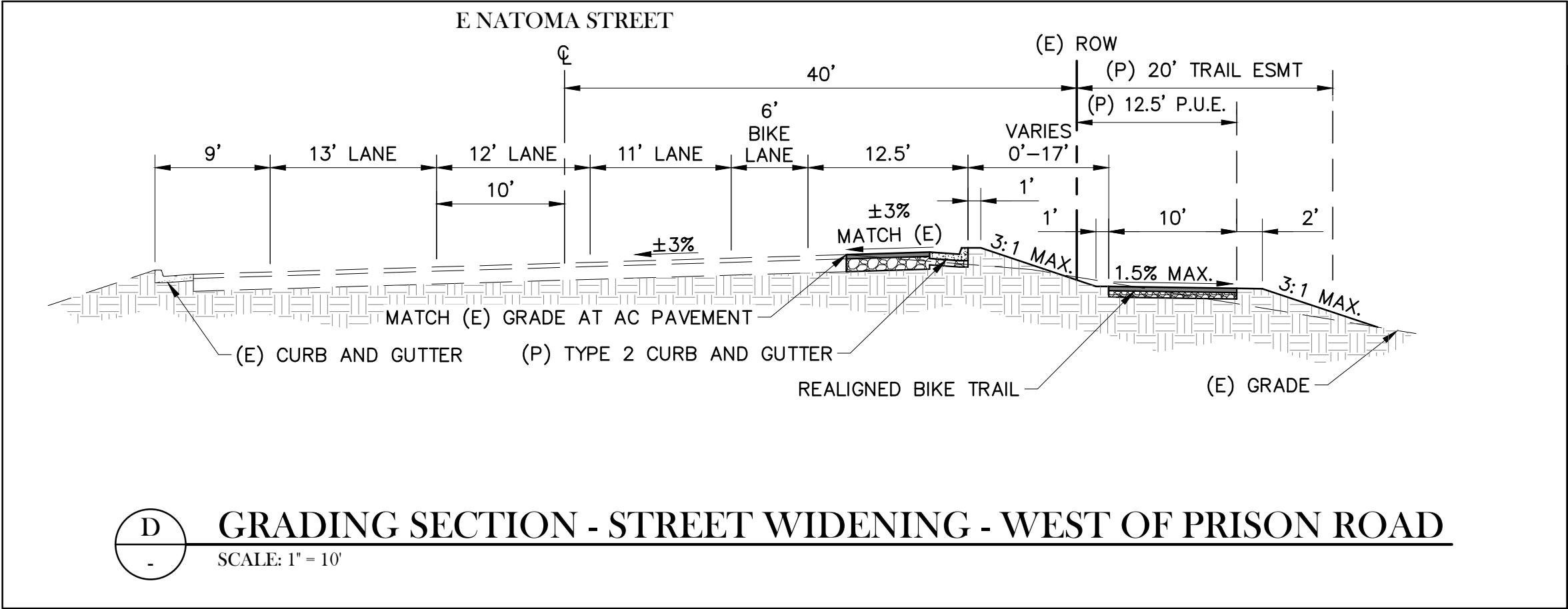
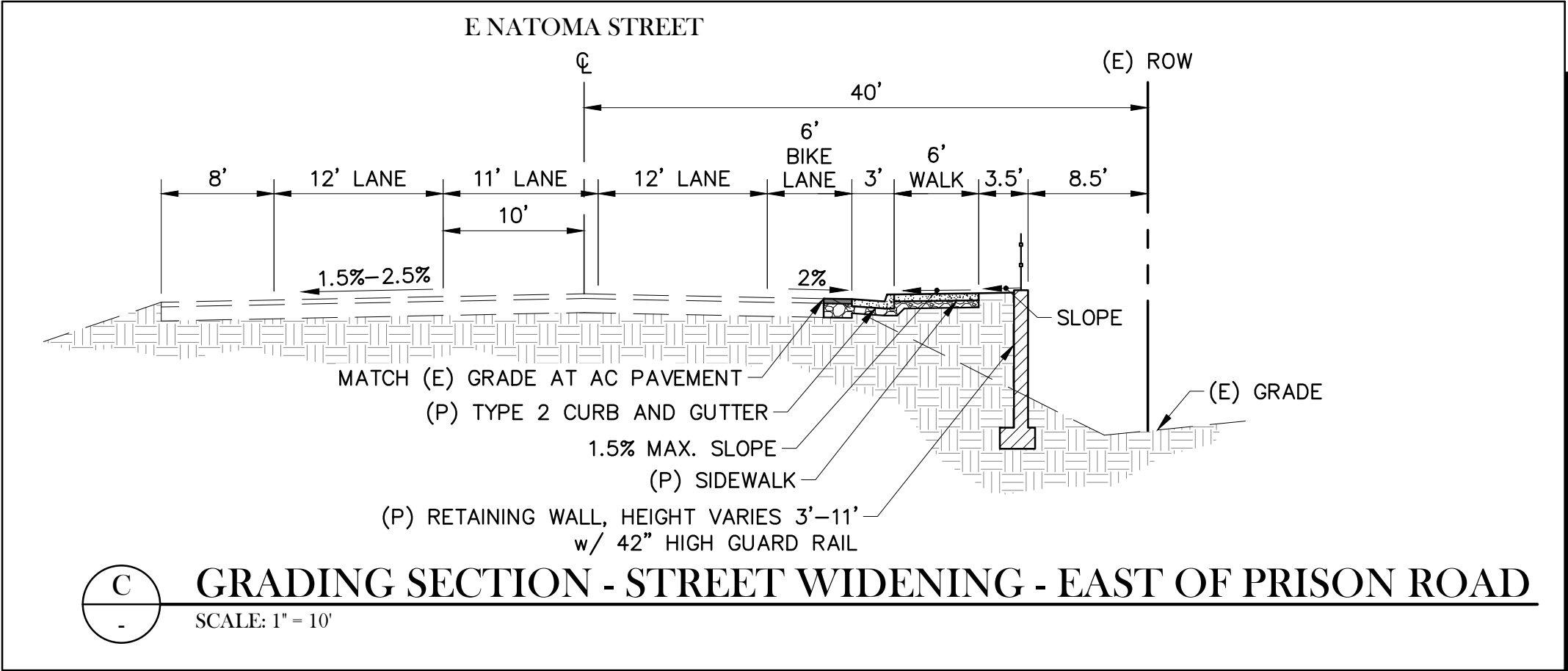
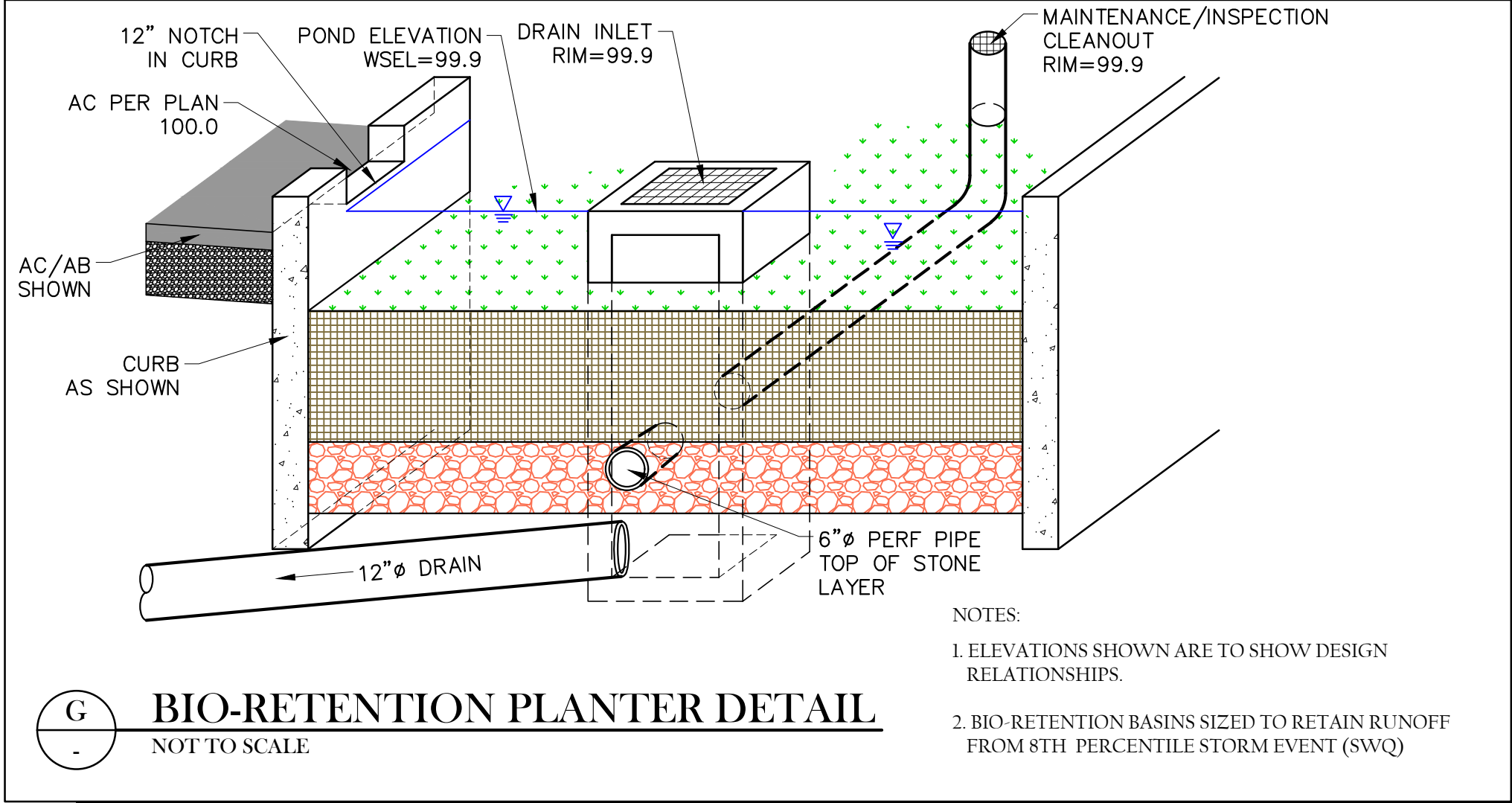
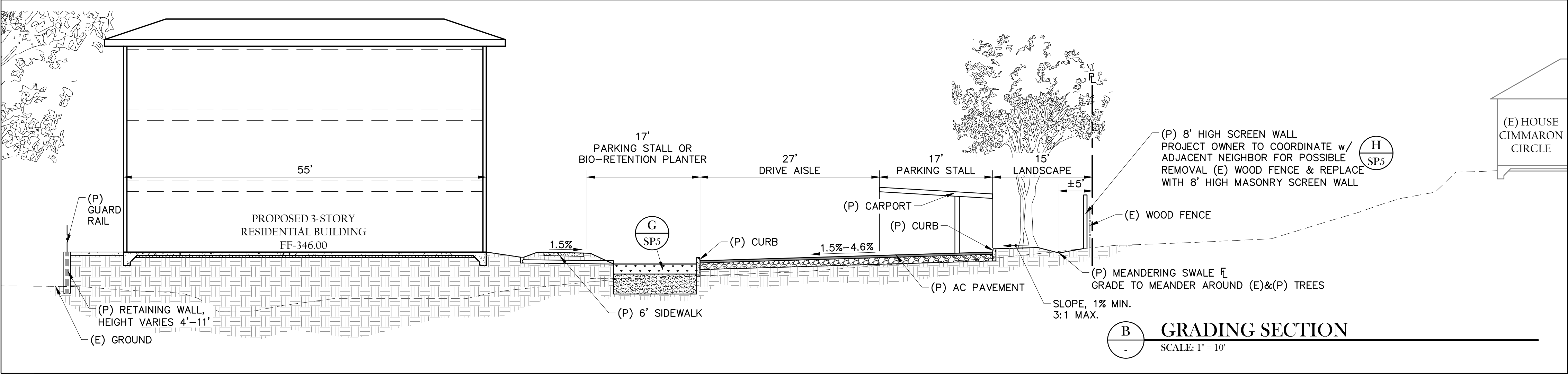
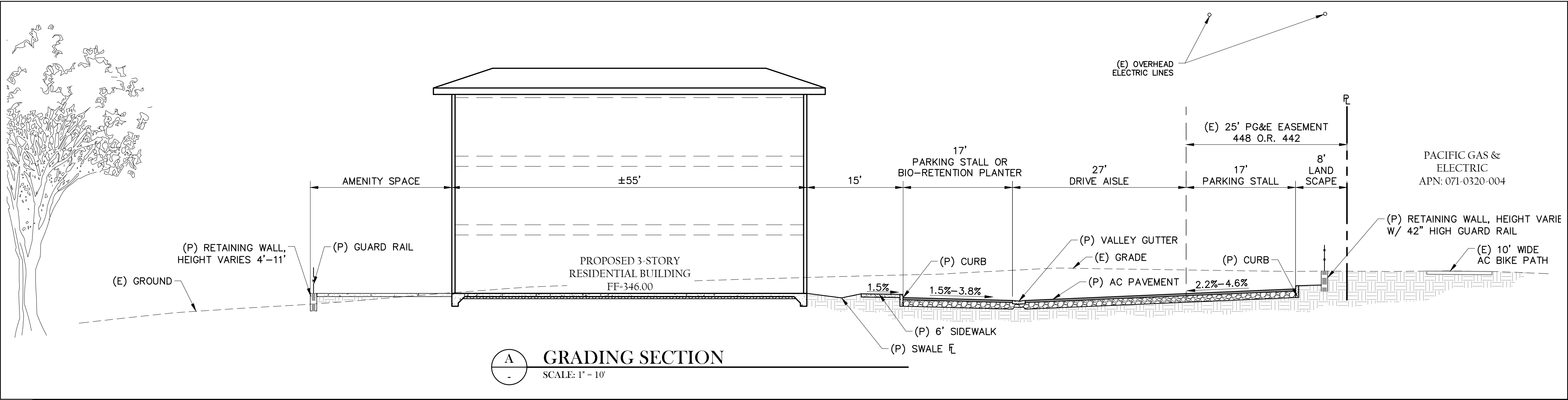
785 Orchard Drive, Suite #110
Folsom, CA 95630
Phone: (916) 608-0707
Fax: (916) 608-0701

SHEET
SP-4

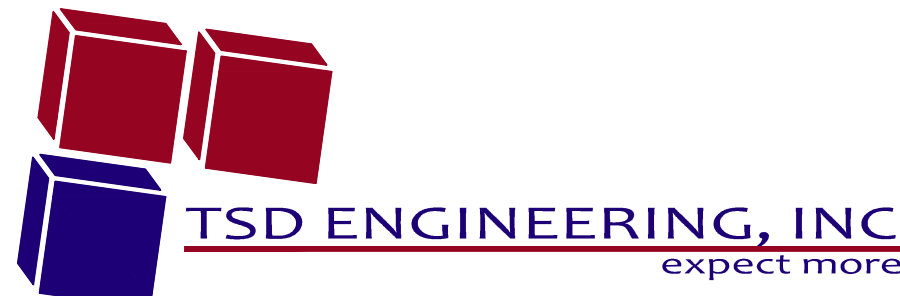
PRELIMINARY GRADING SECTIONS

NATOMA SENIOR APARTMENTS

CITY OF FOLSOM, CA



NATOMA SENIOR APARTMENTS
PRELIMINARY GRADING SECTIONS
NOVEMBER 03, 2021

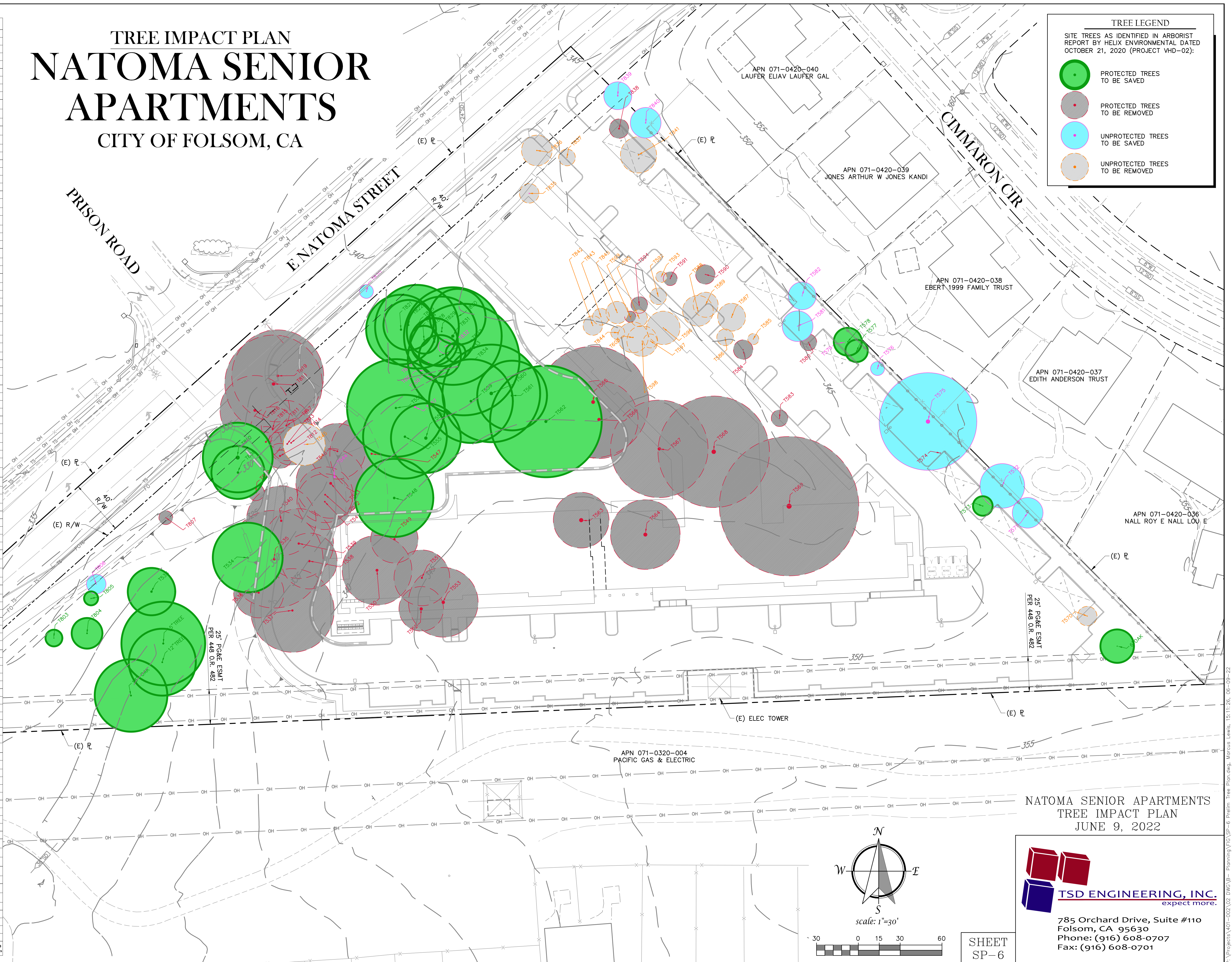


785 Orchard Drive, Suite #110
Folsom, CA 95630
Phone: (916) 608-0707
Fax: (916) 608-0701

SHEET
SP-5

TREE IMPACT PLAN
NATOMA SENIOR
APARTMENTS
CITY OF FOLSOM, CA

| Number | Species | DOB (in) | Orbital height (in) | Height (in) | Sex | Health | Notes | Protected? | Migratory? | Protected | | Uncertainty |
|---------|-----------------------------------|----------------|---------------------|-------------|-----|--------|--|------------|------------|-------------|-----------|-------------|
| | | | | | | | | | | Reared (in) | Size (in) | |
| 533 | Blue Oak - Quercus alba | 17 | 17 | 58 | 5 | 4 | | YES | YES | FLM | 17.8 | YES |
| 534 | Blue Oak - Quercus alba | 14.8 | 24 | 25 | 65 | 5 | lean | YES | YES | FLM | 14.0 | YES |
| 535 | Blue Oak - Quercus alba | 20.4 | 35 | 75 | 5 | 4 | | YES | YES | FLM | 20.4 | NO |
| 536 | Blue Oak - Quercus alba | 15 | 18 | 55 | 2 | 3 | crown debark, lean | YES | YES | HMF | 7.5 | NO |
| 537 | Blue Oak - Quercus alba | 16.5 | 30 | 72 | 3 | 4 | crown debark | YES | YES | FLM | 16.5 | NO |
| 538 | Blue Oak - Quercus alba | 18.4 | 20 | 70 | 2 | 4 | crown debark | YES | YES | HMF | 9.2 | NO |
| 539 | Blue Oak - Quercus alba | 16.9 | 25 | 70 | 2 | 5 | tree is in decline | YES | YES | HMF | 8.5 | NO |
| 540 | Blue Oak - Quercus alba | 16.7 | 25 | 65 | 2 | 3 | crown debark, lean | YES | YES | FLM | 8.3 | NO |
| 541 | Blue Oak - Quercus alba | 12.5 | 20 | 15 | 1 | 1 | crown debark, lean | YES | NO | - | NO | NO |
| 542 | Blue Oak - Quercus alba | 11.6 | 20 | 15 | 1 | 1 | crown debark, lean | YES | NO | - | NO | NO |
| 543 | Blue Oak - Quercus alba | 23.5 | 25 | 45 | 2 | 3 | crown debark, included bark, lean | YES | YES | HMF | 10.7 | NO |
| 544 | Blue Oak - Quercus alba | 17.7 | 0 | 0 | 0 | 0 | dead | NO | NO | - | NO | 13.7 |
| 545 | Academy - Monarda | 5.3, 3.3, 3.2 | 15 | 15 | 4 | 4 | codominant leaders | NO | NO | - | NO | 5.3 |
| 546 | Blue Oak - Quercus alba | 13.2 | 20 | 55 | 1 | 4 | crown debark, nearly dead | YES | NO | - | NO | NO |
| 547 | Blue Oak - Quercus alba | 16.1 | 30 | 58 | 2 | 4 | crown debark | YES | YES | HMF | 8.0 | NO |
| 548 | Blue Oak - Quercus alba | 19.8 | 28 | 70 | 3 | 4 | crown debark | YES | NO | - | YES | NO |
| 549 | Blue Oak - Quercus alba | 27.8 | 17 | 55 | 1 | 4 | crown debark | YES | NO | - | NO | NO |
| 550 | Blue Oak - Quercus alba | 22.5 | 25 | 68 | 1 | 4 | crown debark | YES | NO | - | NO | NO |
| 551 | Blue Oak - Quercus alba | 14.7 | 20 | 55 | 2 | 4 | crown debark | YES | YES | HMF | 7.2 | NO |
| 552 | Blue Oak - Quercus alba | 25.2 | 16 | 65 | 2 | 4 | crown debark | YES | YES | HMF | 22.6 | NO |
| 553 | Blue Oak - Quercus alba | 26.5 | 25 | 65 | 4 | 4 | crown debark | YES | YES | FLM | 16.5 | NO |
| 554 | Blue Oak - Quercus alba | 26.6 | 25 | 65 | 1 | 3 | crown debark, nearly dead | YES | NO | - | YES | NO |
| 555 | Blue Oak - Quercus alba | 19.2 | 30 | 65 | 1 | 4 | crown debark | YES | NO | - | YES | NO |
| 556 | Blue Oak - Quercus alba | 17 | 35 | 60 | 2 | 3 | codominant leaders, crown debark | YES | YES | HMF | 8.5 | YES |
| 557 | Blue Oak - Quercus alba | 14.4 | 0 | 0 | 0 | 0 | dead | NO | NO | - | - | NO |
| 558 | Blue Oak - Quercus alba | 16.3 | 0 | 0 | 0 | 0 | dead | NO | NO | - | - | NO |
| 559 | Blue Oak - Quercus alba | 20.5 | 30 | 68 | 3 | 3 | crown debark, lean | YES | YES | FLM | 20.5 | YES |
| 560 | Blue Oak - Quercus alba | 28.7 | 35 | 75 | 3 | 4 | codominant leaders | YES | YES | FLM | 28.7 | YES |
| 561 | Blue Oak - Quercus alba | 15.8, 39.8 | 25 | 68 | 4 | 4 | codominant leaders | YES | YES | FLM | 16.4 | YES |
| 562 | Blue Oak - Quercus alba | 23.7 | 40 | 70 | 4 | 4 | codominant leaders | YES | YES | FLM | 23.7 | YES |
| 563 | Blue Oak - Quercus alba | 33.5 | 20 | 70 | 2 | 3 | trunk wound, trunk rot | YES | YES | HMF | 11.9 | NO |
| 564 | Blue Oak - Quercus alba | 32.1 | 25 | 75 | 5 | 5 | codominant leaders | YES | YES | FLM | 32.1 | NO |
| 565 | Blue Oak - Quercus alba | 30.0 | 40 | 80 | 2 | 4 | crown debark | YES | YES | HMF | 13.0 | NO |
| 566 | Blue Oak - Quercus alba | 27.3 | 28 | 70 | 2 | 4 | codominant leaders | YES | YES | HMF | 13.65 | NO |
| 567 | Blue Oak - Quercus alba | 26.6 | 35 | 75 | 4 | 4 | lean | YES | YES | FLM | 26.6 | NO |
| 568 | Blue Oak - Quercus alba | 35.5 | 40 | 75 | 5 | 4 | codominant leaders | YES | YES | FLM | 35.5 | NO |
| 569 | Blue Oak - Quercus alba | 41 | 50 | 80 | 4 | 4 | codominant leaders, included bark, trunk rot | YES | YES | FLM | 41.0 | NO |
| 570 | Blue Oak - Quercus alba | 5.6, 5.7 | 7 | 14 | 4 | 4 | codominant leaders | NO | NO | - | NO | 5.7 |
| 571 | Ononiscus cherry - Prunella | 6, 6, 5.8, 4 | 11 | 15 | 4 | 4 | codominant leaders | NO | NO | - | YES | YES |
| 572 | Ononiscus cherry - Prunella | 7.2 | 16 | 22 | 2 | 4 | codominant leaders | NO | NO | - | YES | YES |
| 573 | Blue Oak - Quercus alba | 7.2 | 7 | 11 | 5 | 5 | codominant leaders | YES | YES | FLM | 7.2 | YES |
| 574 | Blue Oak - Quercus alba | 6.1 | 8 | 12 | 5 | 5 | codominant leaders | YES | YES | FLM | 6.1 | NO |
| 575 | Fraxinus corymbosa - Quercus alba | 30.35 | 35 | 65 | 4 | 4 | codominant leaders, included bark | NO | NO | - | - | YES |
| 576 | Blue Oak - Quercus alba | 5.6 | 5 | 11 | 4 | 4 | codominant leaders | NO | NO | - | - | YES |
| 577 | Blue Oak - Quercus alba | 6.7 | 8 | 17 | 4 | 4 | codominant leaders | YES | YES | FLM | 6.7 | YES |
| 578 | Blue Oak - Quercus alba | 7.3 | 10 | 15 | 4 | 3 | codominant leaders | YES | YES | FLM | 7.3 | YES |
| 579 | Blue Oak - Quercus alba | 4.5 | 7 | 11 | 5 | 5 | codominant leaders | NO | NO | - | - | YES |
| 580 | Blue Oak - Quercus alba | 6 | 6 | 10 | 5 | 5 | codominant leaders | YES | YES | FLM | 6.0 | YES |
| 581 | Blue Oak - Quercus alba | 4.8, 4.8 | 11 | 12 | 5 | 4 | codominant leaders, included bark | NO | NO | - | - | YES |
| 582 | Ononiscus cherry - Prunella | 4.8, 4.7 | 10 | 15 | 4 | 3 | codominant leaders | NO | NO | - | - | YES |
| 583 | Blue Oak - Quercus alba | 6.5 | 6 | 11 | 4 | 4 | codominant leaders | YES | YES | FLM | 6.5 | NO |
| 584 | Blue Oak - Quercus alba | 6.2 | 7 | 16 | 4 | 4 | codominant leaders | YES | YES | FLM | 6.2 | NO |
| 585 | Blue Oak - Quercus alba | 4.5 | 4 | 11 | 5 | 5 | codominant leaders | NO | NO | - | - | NO |
| 586 | Blue Oak - Quercus alba | 4.2, 2.8, 3.5 | 6 | 12 | 4 | 4 | codominant leaders, included bark | NO | NO | - | - | NO |
| 587 | Blue Oak - Quercus alba | 6.6, 6 | 10 | 18 | 4 | 3 | included bark, codominant leaders | YES | YES | FLM | 8.8 | NO |
| 588 | Blue Oak - Quercus alba | 8.6, 6.7 | 11 | 19 | 5 | 4 | codominant leaders | YES | YES | FLM | 10.9 | NO |
| 589 | Fraxinus corymbosa - Quercus alba | 5.5, 2.3 | 9 | 9 | 4 | 3 | codominant leaders | NO | NO | - | - | NO |
| 590 | Blue Oak - Quercus alba | 6 | 7 | 15 | 5 | 5 | codominant leaders | YES | YES | FLM | 6.0 | NO |
| 591 | Blue Oak - Quercus alba | 6.5 | 5 | 12 | 4 | 4 | codominant leaders | YES | YES | FLM | 6.5 | NO |
| 592 | Blue Oak - Quercus alba | 4.5 | 6 | 12 | 4 | 4 | codominant leaders | NO | NO | - | - | NO |
| 593 | Blue Oak - Quercus alba | 4 | 4 | 12 | 3 | 3 | codominant leaders | NO | NO | - | - | NO |
| 594 | Blue Oak - Quercus alba | 6.2 | 6 | 12 | 4 | 4 | codominant leaders | YES | YES | FLM | 6.2 | NO |
| 595 | Blue Oak - Quercus alba | 5 | 6 | 12 | 4 | 4 | codominant leaders | NO | NO | - | - | NO |
| 596 | Fraxinus corymbosa - Prunella | 6.5, 6.7 | 12 | 15 | 4 | 3 | codominant leaders | NO | NO | - | - | NO |
| 597 | Fraxinus corymbosa - Prunella | 5.7, 6.2 | 5 | 18 | 5 | 5 | codominant leaders | NO | NO | - | - | NO |
| 598 | Fraxinus corymbosa - Prunella | 9.3, 8.3 | 11 | 19 | 5 | 3 | codominant leaders, included bark | NO | NO | - | - | NO |
| 599 | Fraxinus corymbosa - Prunella | 8.9 | 4 | 16 | 4 | 4 | codominant leaders | NO | NO | - | - | NO |
| 600 | Fraxinus corymbosa - Prunella | 5.6 | 13 | 20 | 5 | 5 | codominant leaders | NO | NO | - | - | NO |
| 803 | Blue Oak - Quercus alba | 6.4 | 6 | 18 | 5 | 4 | codominant leaders | YES | YES | FLM | 6.4 | YES |
| 804 | Blue Oak - Quercus alba | 10.9 | 11 | 22 | 5 | 4 | codominant leaders | YES | YES | FLM | 10.9 | YES |
| 805 | Blue Oak - Quercus alba | 7.2 | 5 | 16 | 5 | 5 | codominant leaders | YES | YES | FLM | 7.2 | YES |
| 806 | Blue Oak - Quercus alba | 4.2, 5.5 | 7 | 11 | 4 | 3 | codominant leaders | NO | NO | - | - | YES |
| 807 | Blue Oak - Quercus alba | 6.7 | 5 | 11 | 4 | 3 | codominant leaders | YES | YES | FLM | 6.7 | NO |
| 808 | Blue Oak - Quercus alba | 18.6 | 19 | 65 | 3 | 4 | lean | YES | YES | FLM | 18.6 | YES |
| 809 | Fraxinus corymbosa - Quercus alba | 15.7 | 6 | 13 | 2 | 1 | trunk wound, trunk rot, lean | YES | YES | HMF | 7.8 | NO |
| 810 | Blue Oak - Quercus alba | 32.5 | 25 | 65 | 5 | 4 | codominant leaders | YES | YES | FLM | 32.5 | YES |
| 811 | Blue Oak - Quercus alba | 14.4 | 11 | 35 | 4 | 3 | codominant leaders | YES | YES | FLM | 14.4 | NO |
| 812 | Blue Oak - Quercus alba | 15.3 | 9 | 40 | 3 | 4 | exposed roots | YES | YES | FLM | 15.3 | NO |
| 813 | Blue Oak - Quercus alba | 12 | 12 | 32 | 4 | 4 | included bark | YES | YES | FLM | 12.0 | NO |
| 814 | Blue Oak - Quercus alba | 13.8 | 16 | 35 | 4 | 2 | lean | YES | YES | FLM | 11.8 | NO |
| 815 | Blue Oak - Quercus alba | 13 | 16 | 36 | 3 | 3 | lean | YES | YES | FLM | 11.0 | NO |
| 816 | Blue Oak - Quercus alba | 22 | 25 | 60 | 5 | 4 | codominant leaders | YES | YES | FLM | 22.0 | NO |
| 817 | Blue Oak - Quercus alba | 14.4 | 18 | 25 | 1 | 1 | crown debark, lean | YES | NO | - | - | NO |
| 818 | Blue Oak - Quercus alba | 28 | 35 | 70 | 4 | 3 | codominant leaders | YES | YES | FLM | 28.0 | NO |
| 819 | Blue Oak - Quercus alba | 20 | 33 | 65 | 4 | 4 | codominant leaders | YES | YES | FLM | 20.0 | NO |
| 820 | Blue Oak - Quercus alba | 5.2 | 5 | 8 | 5 | 4 | codominant leaders | NO | NO | - | - | NO |
| 821 | Blue Oak - Quercus alba | 17.8 | 25 | 60 | 2 | 2 | crown debark | YES | YES | HMF | 8.7 | YES |
| 822 | Blue Oak - Quercus alba | 12.2, 9.2 | 18 | 20 | 1 | 1 | crown debark, lean, codominant leaders | YES | NO | - | YES | YES |
| 823 | Blue Oak - Quercus alba | 17 | 30 | 68 | 3 | 3 | codominant leaders | YES | YES | FLM | 17.0 | YES |
| 824 | Blue Oak - Quercus alba | 9.5 | 10 | 35 | 3 | 4 | crown debark | YES | YES | FLM | 9.5 | YES |
| 825 | Blue Oak - Quercus alba | 96.88 | 0 | 0 | 1 | 1 | dead | NO | NO | - | - | YES |
| 826 | Blue Oak - Quercus alba | 76.68 | 0 | 0 | 1 | 1 | dead | NO | NO | - | - | YES |
| 827 | Blue Oak - Quercus alba | 12.5 | 15 | 35 | 1 | 1 | crown debark, lean | YES | NO | - | YES | YES |
| 828 | Blue Oak - Quercus alba | 18.5 | 17 | 45 | 1 | 1 | crown debark | YES | NO | - | YES | YES |
| 829 | Blue Oak - Quercus alba | 12.8 | 25 | 50 | 4 | 1 | lean | YES | YES | FLM | 12.8 | YES |
| 830 | Blue Oak - Quercus alba | 36.6 | 20 | 35 | 4 | 2 | lean | YES | YES | FLM | 36.6 | YES |
| 831 | Blue Oak - Quercus alba | 25 | 35 | 70 | 4 | 4 | trunk wound, lean | YES | YES | FLM | 25.0 | YES |
| 832 | Blue Oak - Quercus alba | 5.8 | 5 | 17 | 4 | 3 | codominant leaders | NO | NO | - | - | YES |
| 833 | Blue Oak - Quercus alba | 9 | 7 | 20 | 4 | 4 | codominant leaders | YES | YES | FLM | 9.0 | YES |
| 834 | Blue Oak - Quercus alba | 14.1 | 40 | 68 | 3 | 3 | crown debark, lean | YES | YES | FLM | 14.1 | YES |
| 835 | Fraxinus corymbosa - Quercus alba | 64.46 | 7 | 16 | 5 | 4 | codominant leaders | YES | YES | FLM | 7.9 | NO |
| 836 | Fraxinus corymbosa - Quercus alba | 77.55 | 11 | 19 | 5 | 4 | codominant leaders | YES | YES | FLM | 9.4 | NO |
| 837 | Fraxinus corymbosa - Quercus alba | 57.27 | 6 | 12 | 5 | 3 | codominant leaders, included bark | NO | NO | - | - | NO |
| 838 | Fraxinus corymbosa - Quercus alba | 12.5 | 7 | 18 | 4 | 4 | included bark | YES | YES | FLM | 12.5 | NO |
| 839 | Gooding's Black willow - Prunella | 9.2, 30.4, 7.2 | 10 | 18 | 2 | 3 | included bark, crown debark, lean | NO | NO | - | - | YES |
| 840 | Gooding's Black willow - Prunella | 85.9 | 9 | 16 | 2 | 2 | included bark, crown debark, lean | NO | NO | - | - | YES |
| 841 | Fraxinus corymbosa - Prunella | 95.56 | 13 | 21 | 4 | 4 | codominant leaders | YES | YES | FLM | 11.0 | NO |
| 842 | Fraxinus corymbosa - Prunella | 62.3 | 7 | 16 | 4 | 4 | codominant leaders | NO | NO | - | - | NO |
| 843 | Blue Oak - Quercus alba | 5.3 | 6 | 18 | 5 | 5 | codominant leaders | YES | YES | FLM | 6.3 | NO |
| 844 | Fraxinus corymbosa - Prunella | 4.8 | 5 | 17 | 5 | 5 | codominant leaders | NO | NO | - | - | NO |
| 845 | Blue Oak - Quercus alba | 59.27 | 8 | 13 | 5 | 4 | codominant leaders | NO | NO | - | - | NO |
| Totals: | | | | | | | | 77 | 66 | 936.6 | 57.3 | 1073.0 |



PRELIMINARY ACCESS AND CIRCULATION PLAN

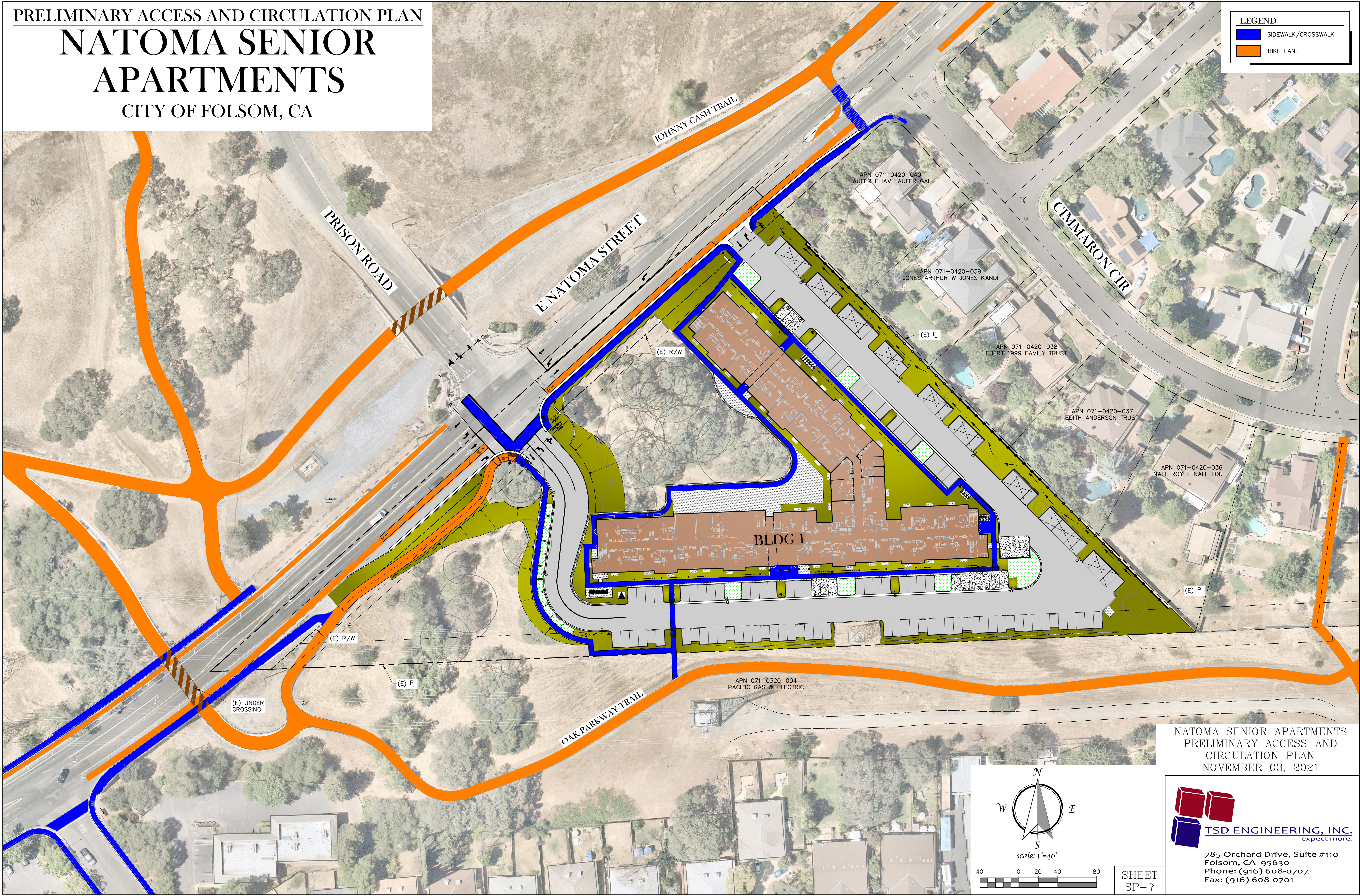
NATOMA SENIOR APARTMENTS

CITY OF FOLSOM, CA

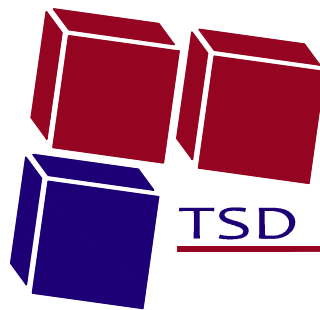
LEGEND

SIDEWALK/CROSSWALK

BIKE LANE

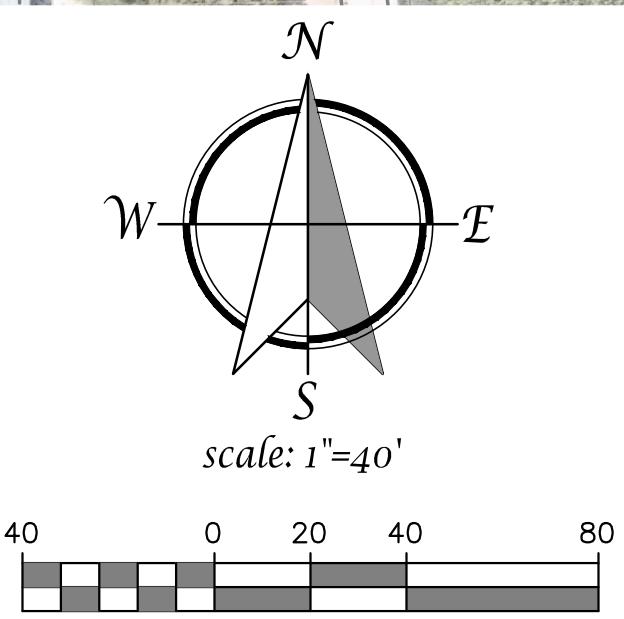


NATOMA SENIOR APARTMENTS
PRELIMINARY ACCESS AND
CIRCULATION PLAN
NOVEMBER 03, 2021



TSD ENGINEERING, INC.
expect more.

785 Orchard Drive, Suite #110
Folsom, CA 95630
Phone: (916) 608-0707
Fax: (916) 608-0701



SHEET
SP-7

PRELIMINARY PHOTO EXHIBIT

NATOMA SENIOR APARTMENTS

CITY OF FOLSOM, CA



A SITE PHOTO
(NOT TO SCALE)



B SITE PHOTO
(NOT TO SCALE)



C SITE PHOTO
(NOT TO SCALE)



D SITE PHOTO
(NOT TO SCALE)



E SITE PHOTO
(NOT TO SCALE)



F SITE PHOTO
(NOT TO SCALE)



G SITE PHOTO
(NOT TO SCALE)



H SITE PHOTO
(NOT TO SCALE)



I SITE PHOTO
(NOT TO SCALE)



J SITE PHOTO
(NOT TO SCALE)



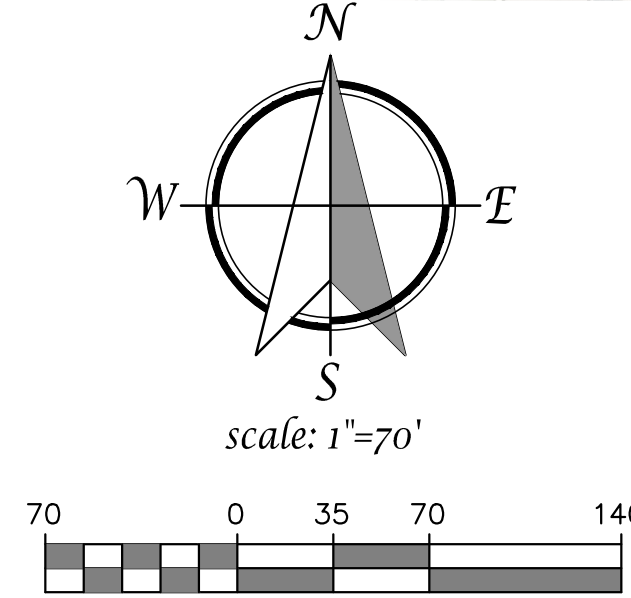
K SITE PHOTO
(NOT TO SCALE)



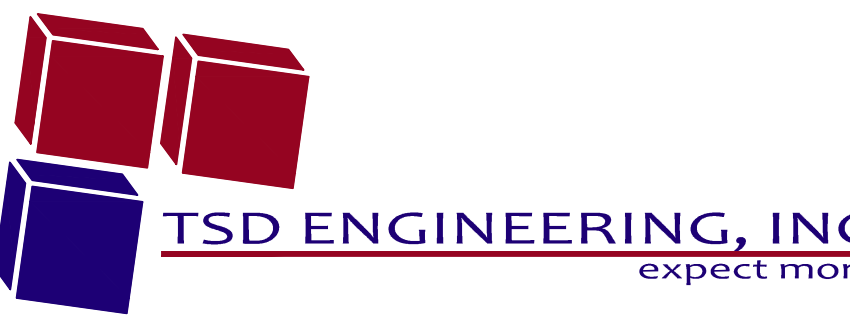
L SITE PHOTO
(NOT TO SCALE)



M SITE PHOTO
(NOT TO SCALE)



NATOMA SENIOR APARTMENTS
PRELIMINARY PHOTO EXHIBIT
NOVEMBER 03, 2021



785 Orchard Drive, Suite #110
Folsom, CA 95630
Phone: (916) 608-0707
Fax: (916) 608-0701

PRELIMINARY EXISTING CONDITIONS

NATOMA SENIOR APARTMENTS

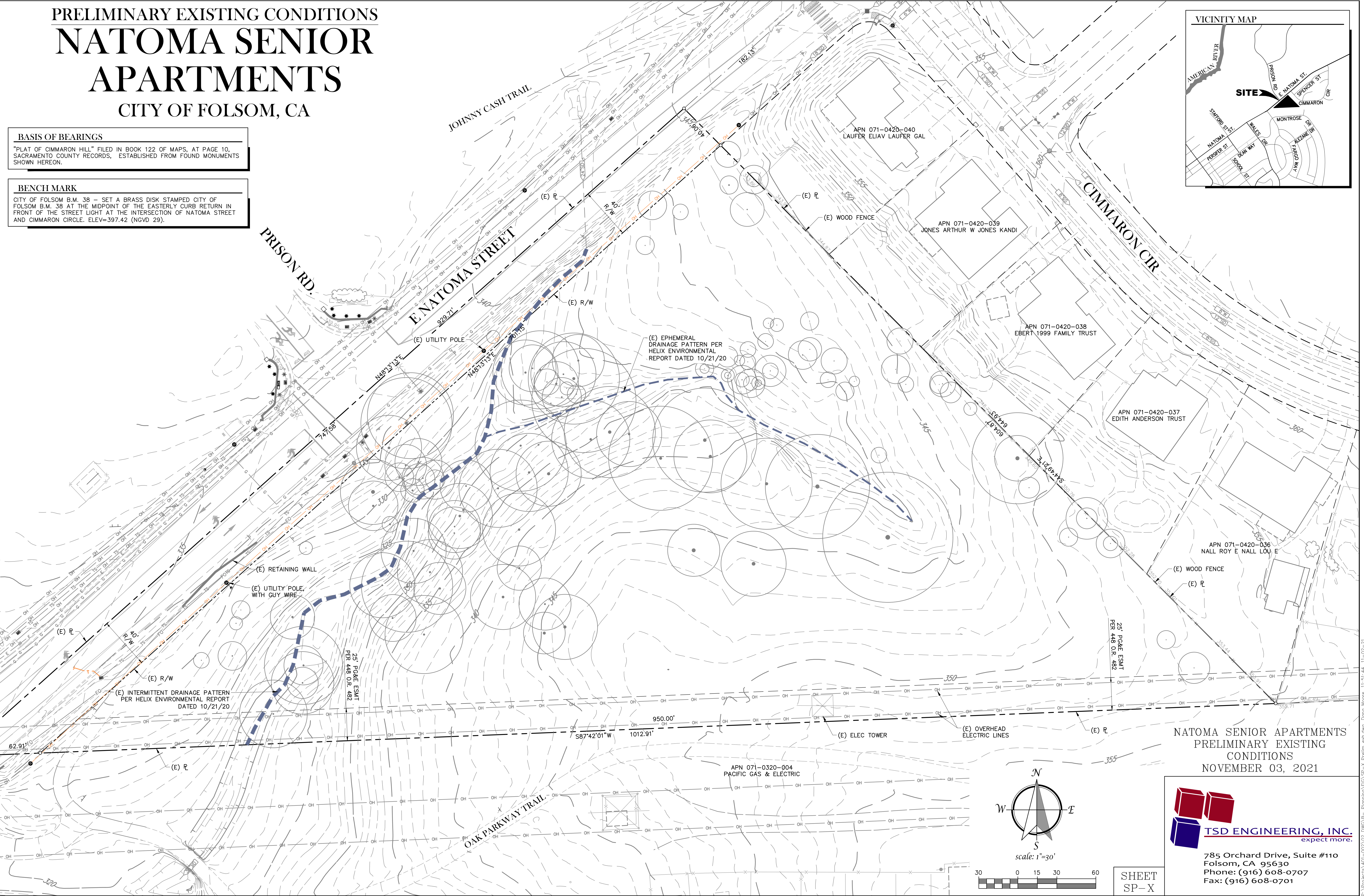
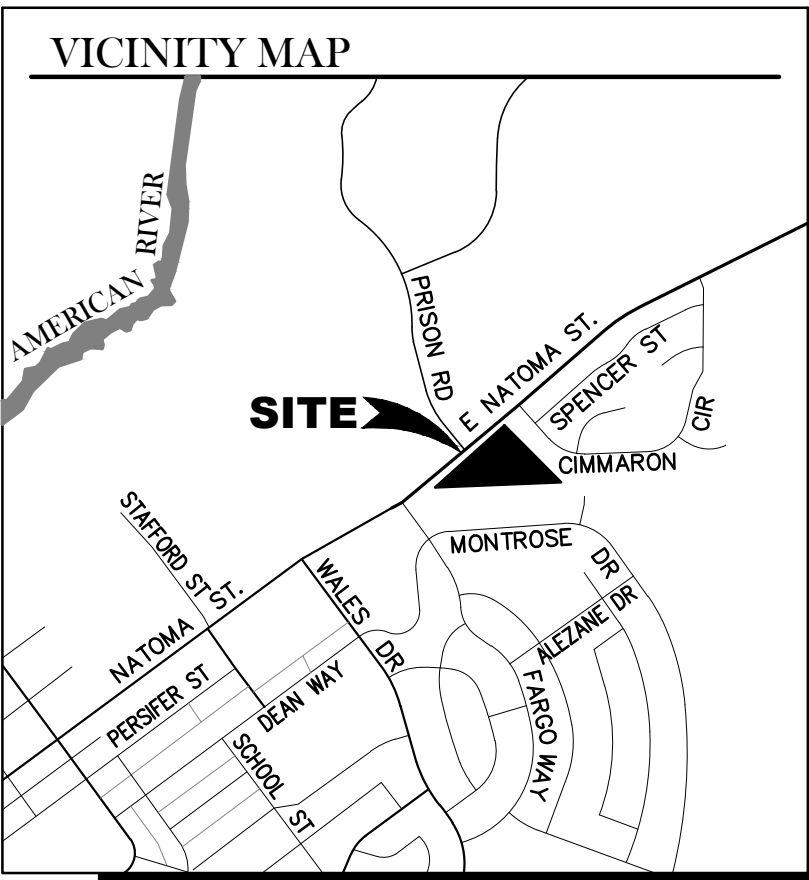
CITY OF FOLSOM, CA

BASIS OF BEARINGS

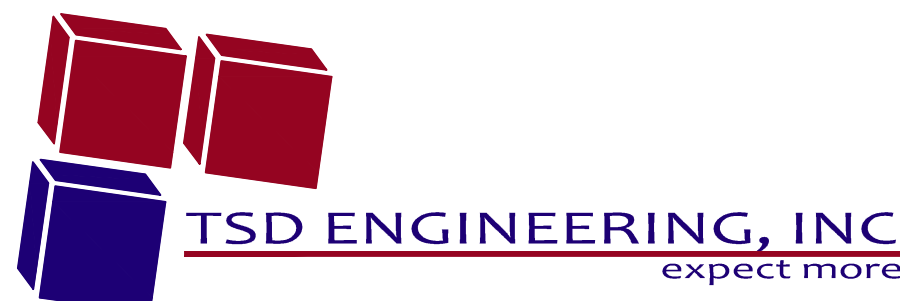
"PLAT OF CIMMARON HILL" FILED IN BOOK 122 OF MAPS, AT PAGE 10, SACRAMENTO COUNTY RECORDS, ESTABLISHED FROM FOUND MONUMENTS SHOWN HEREON.

BENCH MARK

CITY OF FOLSOM B.M. 38 - SET A BRASS DISK STAMPED CITY OF FOLSOM B.M. 38 AT THE MIDPOINT OF THE EASTERLY CURB RETURN IN FRONT OF THE STREET LIGHT AT THE INTERSECTION OF NATOMA STREET AND CIMMARON CIRCLE. ELEV=397.42 (NGVD 29).



NATOMA SENIOR APARTMENTS
PRELIMINARY EXISTING
CONDITIONS
NOVEMBER 03, 2021



785 Orchard Drive, Suite #110
Folsom, CA 95630
Phone: (916) 608-0707
Fax: (916) 608-0701

SHEET
SP-X