

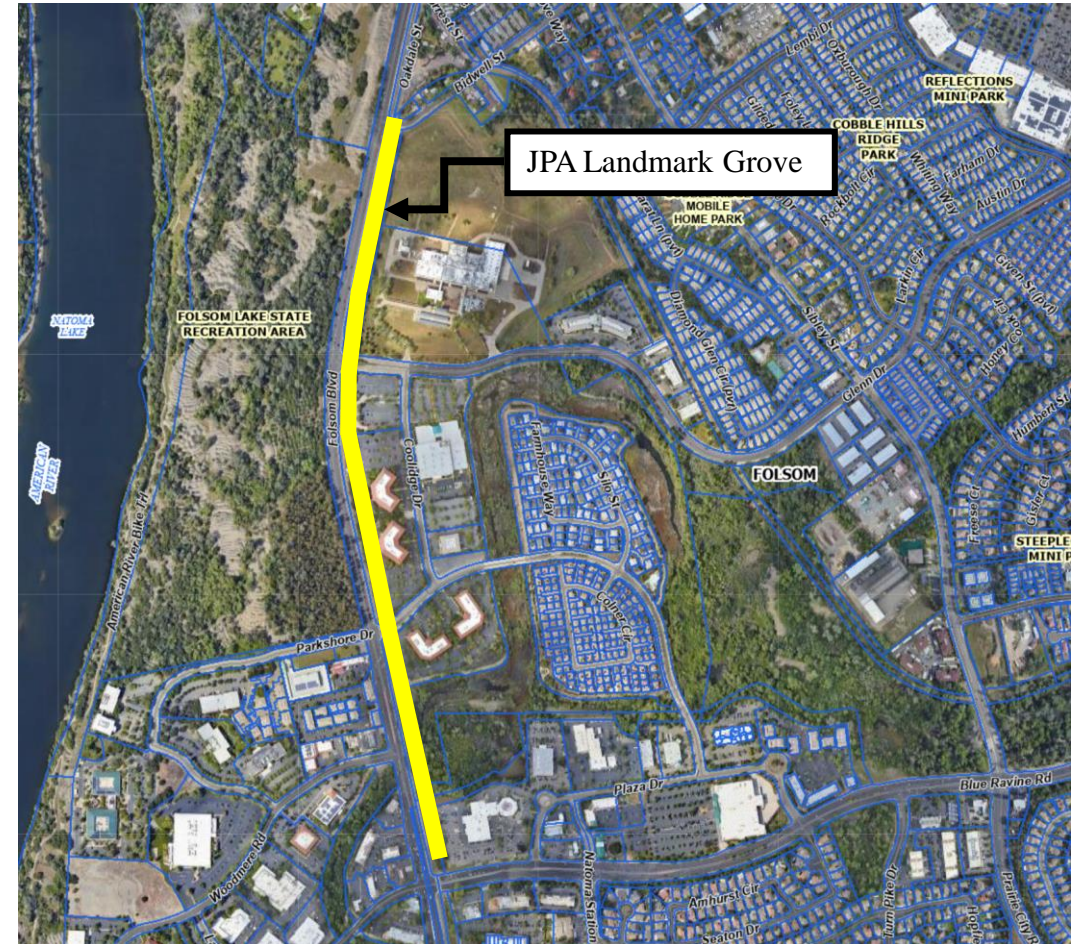
Landmark Tree Declassification Request by Sacramento Regional Transit

Background – JPA Landmark Grove

March 9, 1999 City Council Action:

Resolution No. 5911 – A Resolution Establishing Landmark Tree Designations at the JPA ROW on Folsom Blvd Between Bidwell St & Blue Ravine Rd

- ❖ All trees within the “grove” elevated to Landmark Tree Status based on historical and habitat value
- ❖ Associated staff report identified the potential need to declassify individual trees in the future to allow for light rail improvements



JPA Landmark Grove



What is a Landmark Tree?

FMC Chapter 12.16.170

Designated by City Council

- ✓ Historical value
 - ✓ Outstanding habitat
 - ✓ Unusual species
 - ✓ Superior beauty
- Landmark Tree Registry maintained by the city arborist
 - City assistance with maintenance
 - Any request for removal requires declassification by the City Council



SacRT Light Rail Modernization

15 Minutes to Folsom Project



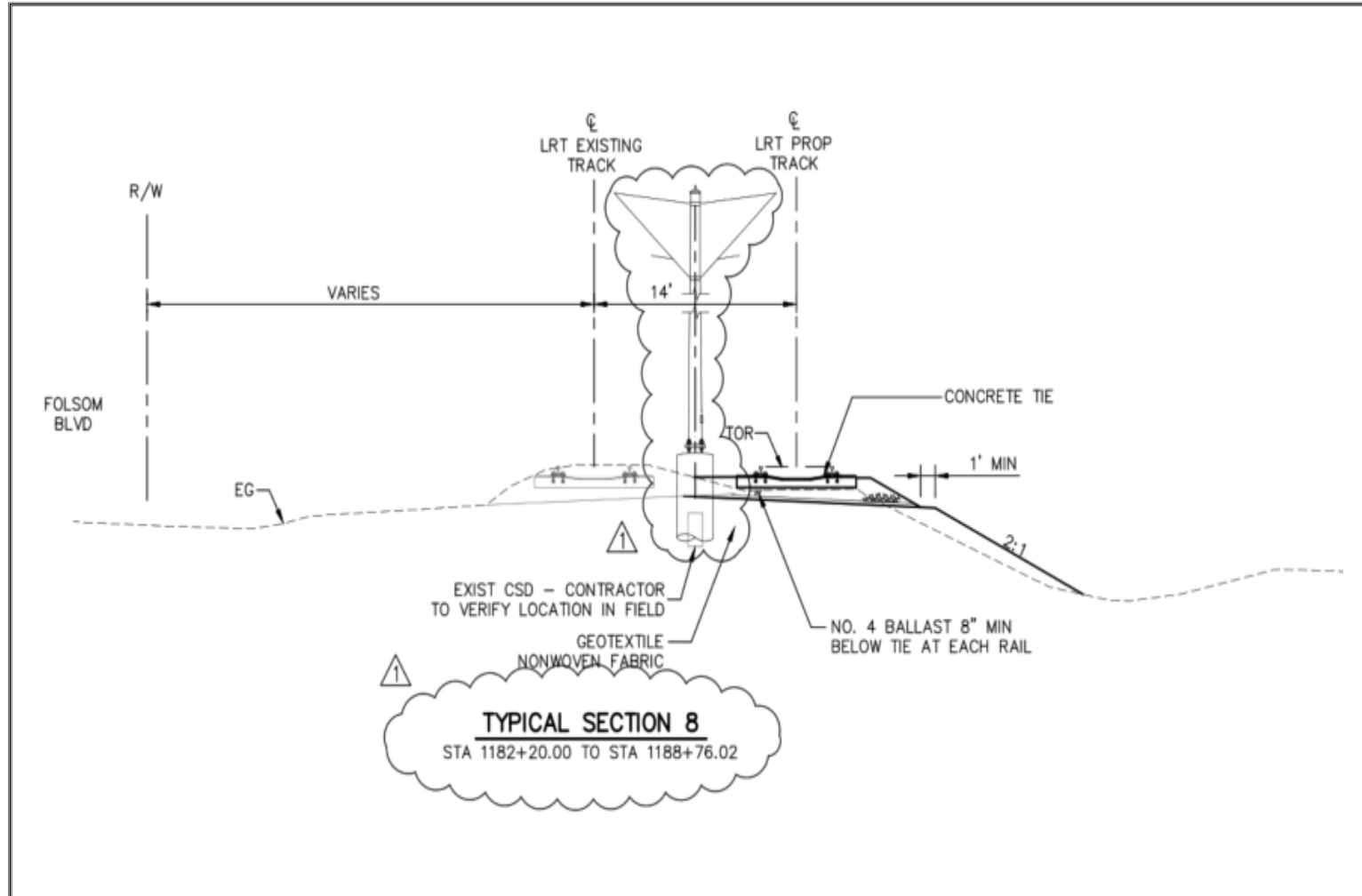
Project Scope:

- Realign existing track and construct a passing track (double track) between Parkshore Dr. and Bidwell St.
- Addition of an inbound loading platform at Glenn/Robert G Holderness Station
- Modify boarding platforms to accommodate new light rail vehicles

Will result in reducing train headway capacity from 30 minutes to 15 minutes

SacRT Light Rail Modernization

15 Minutes to Folsom Project



SacRT Light Rail Modernization Phase 1 Tree Removals



REMOVALS		
Tag #	Species	DSH
4880	Blue Oak	21"
4882	Live Oak	7"
4885	Live Oak	1"
4893	Live Oak	1"
4894	Valley Oak	2"
TOTAL		32"

- ❖ Applicant is working with staff to preserve as many trees as possible.
- ❖ However, some tree removal will be required for the project to move forward.

Initial Study and Mitigated Negative Declaration (IS/MND) prepared in 2020

Findings: Less than significant impact on tree resources
(with mitigation)

SacRT intends to mitigate for the tree removals through payment of in-lieu fees (32" x \$250 = \$8,000), to be deposited into the City's Tree Planting and Replacement Fund for the City to utilize toward future tree planting projects

1. Applicable Findings

- ✘ The trees are declining/in poor health
- ✘ The trees no longer have habitat value
- ✓ The trees prevent reasonable use of the property

2. Financial Impact for the City

- Applicant has paid the \$287 application fee to recover staff time
- Mitigation in-lieu fees to be deposited into the Tree Fund

3. Project Phase II

- A second Landmark Tree declassification application is anticipated for additional necessary tree removals that have recently been discovered for the double tracking between Parkshore Dr. and Glenn Dr.

Staff Recommendation

- Adopt Resolution No. 11159 - *A Resolution to Declassify Five Landmark Trees within the Joint Powers Authority Landmark Grove to Allow for Removal as Part of the Sacramento Regional Transit Light Rail Modernization 15 Minutes to Folsom Project* with the expectation that the project proponent will remove and mitigate the subject trees in accordance with the Chapter 12.16 of the Folsom Municipal Code.