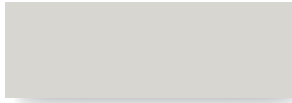
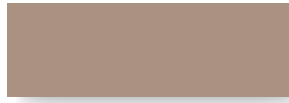


## Standard Kynar 500® Coatings

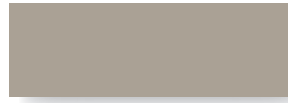
20 or 30-year Commercial, Non-Transferable, Non-Prorated, Limited Warranty  
40-Year Residential, Transferable, Non-Prorated Limited Warranty



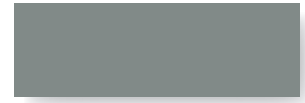
Glacier White SRI-85



Sierra Tan SRI-60



Parchment SRI-58



Sterling Grey SRI-44



Zinc Grey SRI-39



Charcoal Grey SRI-25



Saddle Tan SRI-37



Medium Bronze SRI-36



Tahoe Blue SRI-31



Pacific Blue SRI-26



Hemlock Green SRI-36



Forest Green SRI-24



Graphite Black SRI-26  
Formerly: Black



Dark Bronze SRI-22



Musket SRI-31



Pine Green SRI-25



Matte Black SRI-23



Terra Cotta SRI-43



Tile Red SRI-35

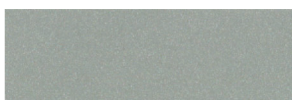


Colonial Red SRI-37



Retro Red SRI-42

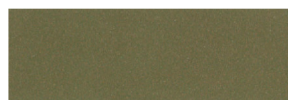
## Premium Metallic 500® Coatings *(Premium Pricing Applies)*



Metallic Silver SRI-60



Champagne SRI-48



Antique Patina SRI-40

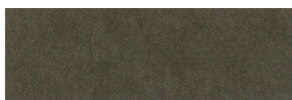


Weathered Zinc SRI-39



Copper Penny SRI-50

## Premium Finish *(Premium Pricing Applies)*



Vintage® SRI-19

Vintage® is an innovative coating process over a G-90 metallic-coated steel surface. The process creates shade variations from light to dark, the lighter shade exhibiting a grey tone while the darker shade exhibits a bronze or brown tone. The dynamic, pre-aged appearance makes this a beautiful and durable product choice that is also graffiti resistant. Vintage® comes with a 20 year warranty. Warranty can vary by environment, see TMP website for more information.

NOTE: Due to the coating process, Vintage® has a color range. Color can vary from batch-to-batch and have directional variations.

## Weathering Materials *(These materials will change appearance over time)*



16 oz. Copper  
20 oz. Copper please inquire  
Pure Copper has no warranty



Zincalume® Plus AZ-55/  
Galvalume® SRI-65

Zincalume® Plus AZ-55 is a 55% aluminum, 45% zinc metallic coating over steel. It is a non-painted finish with a 25 yr. warranty



SRI=Solar Reflective Index. SRI values listed above are in accordance with ASTM E1980 and are based on actual testing. (CRRC) Cool Roof Rating Council SRI values (CA Title 24, ENERGY STAR®) are based on the grouping of colors (color families). CRRC SRI values will differ, as each color is not tested in the color family option. Coatings are low gloss 10-15% sheen. These printed chips provide a close representation of the colors. Metal samples are available upon request. Custom colors available. "Oil canning" is an inherent characteristic of roof and wall products, and not a defect, which is not a cause for panel rejection.

