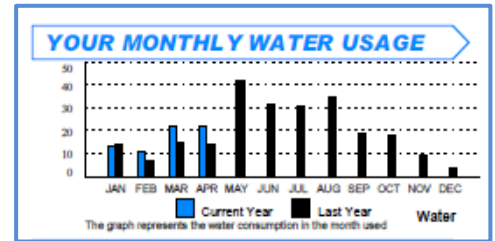


How much water am I using?

There are various ways of finding out how much water you are using each month.

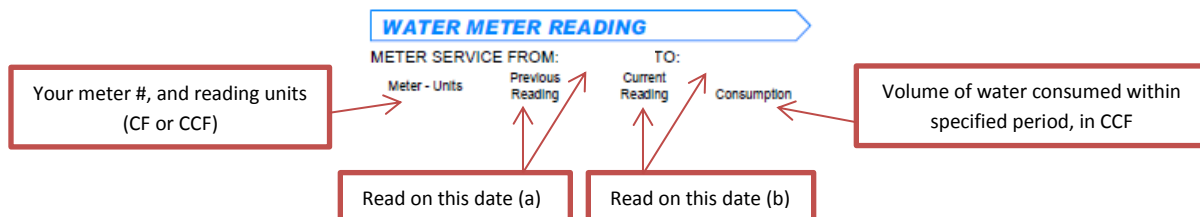
On your bill:

On the back of the monthly statement, an account's historical water usage is depicted in chart and graph format. The graph shows monthly water usage during the previous year (in black) and in the current year (in blue). Water usage data is shown in CCF.



As meters are generally read around the 10th of each month, the April column, actually represents the volume of water used between April 10 and May 10 (the charges for which would be included on the bill you receive in June).

Actual recent meter read data is also displayed on the front of bill.



Reading units:

City meters generally measure in CF (cubic feet) or CCF (hundred cubic feet).

The charge for water used is based on the volume of water used, measured in CCF, and therefore the consumption is displayed as CCF.

To verify consumption, subtract previous read (a) from current read (b) (for reads in CF, divide by 100 to convert to CCF).

Converting CCF to gallons:

A conversion to usage in gallons is shown under the meter reading information on the front of the bill.

1 CCF is approximately equal to 748 gallons, so to calculate the amount of water you have used in gallons, multiply the consumption in CCF by 748.

To convert 10 CCF to gallons: $10 \times 748 = 7,480$ gallons

Online:

If you have an online account on the City website, you have access to various formats of reports regarding your water consumption history.

Log on to your account, select Consumption Report from the menu options on the left, then click on [View](#) under Consumption.

Consumption Reports

Account Number: Location Address:
Customer Name: Phone Number:

You can view the details by clicking on the link for metered services. No details would be available for non-metered services.

Service Description	Meter Number	Consumption	Demand
RGS-COUNTY SEWER CHG	non-metered		
SEWER-CITY CHARGE	non-metered		
SOLID WASTE SALES	non-metered		
WATER-METERED			View

Showing 1 to 4 of 4 entries

Dropcountr:

City of Folsom residents are also invited to download the Dropcountr app, or go to www.dropcountr.com to view daily and historical data, along with comparisons to similar local households. For more information on this program, please contact the City of Folsom Water Conservation team on 916.355.7252 or waterconservation@folsom.ca.us.

If you still need assistance, you may contact office staff:

Email: billingwebmail@folsom.ca.us

Phone: 916.355.7295