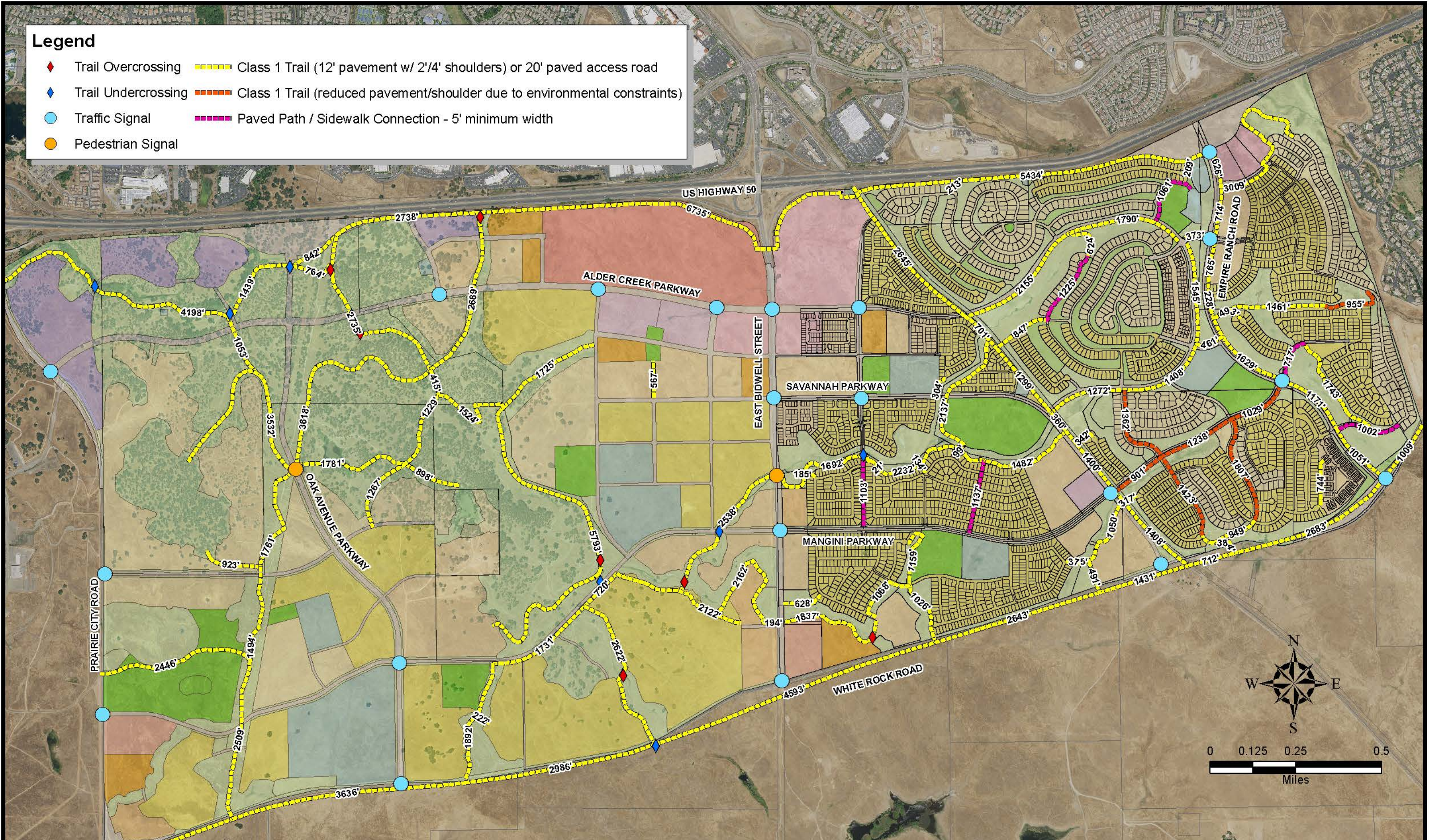


Legend

- ◆ Trail Overcrossing
- ◆ Trail Undercrossing
- Traffic Signal
- Pedestrian Signal
- Class 1 Trail (12' pavement w/ 2'¼' shoulders) or 20' paved access road
- Class 1 Trail (reduced pavement/shoulder due to environmental constraints)
- Paved Path / Sidewalk Connection - 5' minimum width



Folsom Plan Area Specific Plan - 2018 Composite Class 1 Trails